



SZABO SCANDIC

Part of Europa Biosite

Produktinformation



Forschungsprodukte & Biochemikalien



Zellkultur & Verbrauchsmaterial



Diagnostik & molekulare Diagnostik



Laborgeräte & Service

Weitere Information auf den folgenden Seiten!
See the following pages for more information!



Lieferung & Zahlungsart

siehe unsere [Liefer- und Versandbedingungen](#)

Zuschläge

- Mindermengenzuschlag
- Trockeneiszuschlag
- Gefahrgutzuschlag
- Expressversand

SZABO-SCANDIC HandelsgmbH

Quellenstraße 110, A-1100 Wien

T. +43(0)1 489 3961-0

F. +43(0)1 489 3961-7

mail@szabo-scandic.com

www.szabo-scandic.com

[linkedin.com/company/szaboscandic](https://www.linkedin.com/company/szaboscandic) 

Profilin-2 (m): 293T Lysate: sc-122786

BACKGROUND

Profilins (Profilin-1, Profilin-2 and Profilin-3) act as nucleotide exchange factors that use ATP to charge Actin, a process that regulates Actin polymerization by subsequently sequestering the Actin monomer. Profilin-2, also known as PFn2 or PFL, is a 140 amino acid protein that is ubiquitously expressed with highest expression in kidney, brain and skeletal muscle. Like other members of the Profilin family, Profilin-2 functions as an Actin monomer-binding protein that influences the structure of the cytoskeleton by regulating Actin polymerization in response to extracellular signals. High levels of Profilin-2 inhibit Actin polymerization, while lower levels enhance Actin polymerization, suggesting that the expression of Profilin-2 is regulated by the need for polymerization within the cell. Two isoforms of Profilin-2 exist due to alternative splicing events.

REFERENCES

- Honoré, B., Madsen, P., Andersen, A.H. and Leffers, H. 1993. Cloning and expression of a novel human profilin variant, Profilin-2. *FEBS Lett.* 330: 151-155.
- Gieselmann, R., Kwiatkowski, D.J., Janmey, P.A. and Witke, W. 1995. Distinct biochemical characteristics of the two human profilin isoforms. *Eur. J. Biochem.* 229: 621-628.
- Nodelman, I.M., Bowman, G.D., Lindberg, U. and Schutt, C.E. 1999. X-ray structure determination of human Profilin-2: A comparative structural analysis of human profilins. *J. Mol. Biol.* 294: 1271-1285.
- Harbeck, B., Hüttelmaier, S., Schluter, K., Jockusch, B.M. and Illenberger, S. 2000. Phosphorylation of the vasodilator-stimulated phosphoprotein regulates its interaction with Actin. *J. Biol. Chem.* 275: 30817-30825.
- Lambrechts, A., Braun, A., Jonckheere, V., Aszodi, A., Lanier, L.M., Robbens, J., Van Colen, I., Vandekerckhove, J., Fässler, R. and Ampe, C. 2000. Profilin-2 is alternatively spliced, resulting in profilin isoforms that are differentially expressed and have distinct biochemical properties. *Mol. Cell. Biol.* 20: 8209-8219.
- Online Mendelian Inheritance in Man, OMIM™. 2002. Johns Hopkins University, Baltimore, MD. MIM Number: 176590. World Wide Web URL: <http://www.ncbi.nlm.nih.gov/omim/>
- Da Silva, J.S., Medina, M., Zuliani, C., Di Nardo, A., Witke, W. and Dotti, C.G. 2003. Rho A/ROCK regulation of neuritogenesis via Profilin-2a-mediated control of Actin stability. *J. Cell Biol.* 162: 1267-1279.
- Lederer, M., Jockusch, B.M. and Rothkegel, M. 2005. Profilin regulates the activity of p42POP, a novel Myb-related transcription factor. *J. Cell. Sci.* 118 (Pt 2): 331-341.
- Xu, J., Shi, S., Matsumoto, N., Noda, M. and Kitayama, H. 2007. Identification of RGL3 as a potential binding partner for Rap-family small G proteins and Profilin-2. *Cell. Signal.* 19: 1575-1582.

STORAGE

Store at -20° C. Repeated freezing and thawing should be minimized. Sample vial should be boiled once prior to use. Non-hazardous. No MSDS required.

CHROMOSOMAL LOCATION

Genetic locus: Pfn2 (mouse) mapping to 3 D.

PRODUCT

Profilin-2 (m): 293T Lysate represents a lysate of mouse Profilin-2 transfected 293T cells and is provided as 100 µg protein in 200 µl SDS-PAGE buffer.

APPLICATIONS

Profilin-2 (m): 293T Lysate is suitable as a Western Blotting positive control for mouse reactive Profilin-2 antibodies. Recommended use: 10-20 µl per lane.

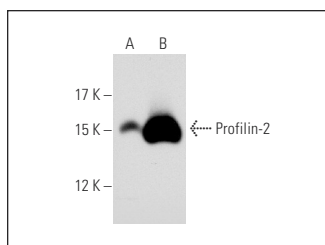
Control 293T Lysate: sc-117752 is available as a Western Blotting negative control lysate derived from non-transfected 293T cells.

Profilin-2 (4K-6): sc-100955 is recommended as a positive control antibody for Western Blot analysis of enhanced mouse Profilin-2 expression in Profilin-2 transfected 293T cells (starting dilution 1:100, dilution range 1:100-1:1,000).

RECOMMENDED SUPPORT REAGENTS

To ensure optimal results, the following support reagents are recommended:
1) Western Blotting: use m-IgGκ BP-HRP: sc-516102 or m-IgGκ BP-HRP (Cruz Marker): sc-516102-CM (dilution range: 1:1000-1:10000), Cruz Marker™ Molecular Weight Standards: sc-2035, UltraCruz® Blocking Reagent: sc-516214 and Western Blotting Luminol Reagent: sc-2048.

DATA



Profilin-2 (4K-6): sc-100955. Western blot analysis of Profilin-2 expression in non-transfected: sc-117752 (A) and mouse Profilin-2 transfected: sc-122786 (B) 293T whole cell lysates.

RESEARCH USE

For research use only, not for use in diagnostic procedures.

PROTOCOLS

See our web site at www.scbt.com for detailed protocols and support products.