



SZABO SCANDIC

Part of Europa Biosite

Produktinformation



Forschungsprodukte & Biochemikalien



Zellkultur & Verbrauchsmaterial



Diagnostik & molekulare Diagnostik



Laborgeräte & Service

Weitere Information auf den folgenden Seiten!
See the following pages for more information!



Lieferung & Zahlungsart

siehe unsere [Liefer- und Versandbedingungen](#)

Zuschläge

- Mindermengenzuschlag
- Trockeneiszuschlag
- Gefahrgutzuschlag
- Expressversand

SZABO-SCANDIC HandelsgmbH

Quellenstraße 110, A-1100 Wien

T. +43(0)1 489 3961-0

F. +43(0)1 489 3961-7

mail@szabo-scandic.com

www.szabo-scandic.com

[linkedin.com/company/szaboscandic](https://www.linkedin.com/company/szaboscandic) 

PTH/PTHrP-R (m): 293T Lysate: sc-122836

BACKGROUND

Parathyroid hormone (PTH), which is also designated parathyrin, is an 84 amino acid single chain peptide that functions to regulate calcium metabolism by raising blood levels of calcium through various mechanisms. PTH stimulates bone formation to increase bone mass and strength in rats and humans. Within the PTH molecule, the essential activity is associated with the first 34 amino acids at the amino-terminus of the molecule. The gene encoding PTH maps to human chromosome 11p15.3-p15.1. Parathyroid hormone-related protein (PTH-rP) is an autocrine factor that is structurally related to PTH yet, unlike PTH, which is synthesized only by the parathyroid cells, PTH-rP is synthesized by several cell types. PTH-rP regulates endochondral bone development and epithelial-mesenchymal interactions during the formation of the mammary glands and teeth. Isolated from the culture medium of a human lung cancer cell line, PTH-rP produces PTH-like effects that are characterized as humoral hypercalcemia of malignancy. PTH and PTH-rP are both regulated by vitamin D and steroid hormones and preferentially bind to specific PTH/PTH-rP receptors, then activate adenylate cyclase or PLC β via PKC activation.

REFERENCES

1. Bruns, M.E., et al. 1995. Expression of parathyroid hormone-related peptide and its receptor messenger ribonucleic acid in human amnion and chorion- decidua: implications for secretion and function. *Am. J. Obstet. Gynecol.* 173: 739-746.
2. Iezzoni, J.C., et al. 1998. Coexpression of parathyroid hormone-related protein and its receptor in breast carcinoma: a potential autocrine effector system. *Mod. Pathol.* 11: 265-270.
3. Takasu, H., et al. 1999. Dual signaling and ligand selectivity of the human PTH/PTHrP receptor. *J. Bone Miner. Res.* 14: 11-20.
4. Huang, Z., et al. 1999. Role of signal transduction in internalization of the G protein-coupled receptor for parathyroid hormone (PTH) and PTH-related protein. *Endocrinology* 140: 1294-1300.
5. Mannstadt, M., et al. 1999. Receptors for PTH and PTHrP: their biological importance and functional properties. *Am. J. Physiol.* 277: 665-675.
6. Turner, P.R., et al. 2000. Apoptosis mediated by activation of the G protein-coupled receptor for parathyroid hormone (PTH)/PTH-related protein (PTHrP). *Mol. Endocrinol.* 14: 241-254.
7. Watson, P.H., et al. 2000. Nuclear localization of the type 1 parathyroid hormone/parathyroid hormone-related peptide receptor in MC3T3-E1 cells: association with serum-induced cell proliferation. *Bone* 26: 221-225.

CHROMOSOMAL LOCATION

Genetic locus: Pthr1 (mouse) mapping to 9 F2 .

PRODUCT

PTH/PTHrP-R (m): 293T Lysate represents a lysate of mouse PTH/PTHrP-R transfected 293T cells and is provided as 100 μ g protein in 200 μ l SDS-PAGE buffer.

APPLICATIONS

PTH/PTHrP-R (m): 293T Lysate is suitable as a Western Blotting positive control for mouse reactive PTH/PTHrP-R antibodies. Recommended use: 10-20 μ l per lane.

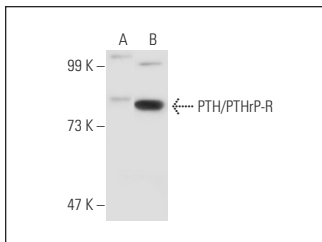
Control 293T Lysate: sc-117752 is available as a Western Blotting negative control lysate derived from non-transfected 293T cells.

PTH/PTHrP-R (3D1.1): sc-12722 is recommended as a positive control antibody for Western Blot analysis of enhanced mouse PTH/PTHrP-R expression in PTH/PTHrP-R transfected 293T cells (starting dilution 1:100, dilution range 1:100-1:1,000).

RECOMMENDED SUPPORT REAGENTS

To ensure optimal results, the following support reagents are recommended: 1) Western Blotting: use m-IgG κ BP-HRP: sc-516102 or m-IgG κ BP-HRP (Cruz Marker): sc-516102-CM (dilution range: 1:1000-1:10000), Cruz Marker[™] Molecular Weight Standards: sc-2035, UltraCruz[®] Blocking Reagent: sc-516214 and Western Blotting Luminol Reagent: sc-2048.

DATA



PTH/PTHrP-R (3D1.1): sc-12722. Western blot analysis of PTH/PTHrP-R expression in non-transfected: sc-117752 (A) and mouse PTH/PTHrP-R transfected: sc-122836 (B) 293T whole cell lysates.

STORAGE

Store at -20° C. Repeated freezing and thawing should be minimized. Sample vial should be boiled once prior to use. Non-hazardous. No MSDS required.

RESEARCH USE

For research use only, not for use in diagnostic procedures.

PROTOCOLS

See our web site at www.scbt.com for detailed protocols and support products.