



SZABO SCANDIC

Part of Europa Biosite

Produktinformation



Forschungsprodukte & Biochemikalien



Zellkultur & Verbrauchsmaterial



Diagnostik & molekulare Diagnostik



Laborgeräte & Service

Weitere Information auf den folgenden Seiten!
See the following pages for more information!



Lieferung & Zahlungsart

siehe unsere [Liefer- und Versandbedingungen](#)

Zuschläge

- Mindermengenzuschlag
- Trockeneiszuschlag
- Gefahrgutzuschlag
- Expressversand

SZABO-SCANDIC HandelsgmbH

Quellenstraße 110, A-1100 Wien

T. +43(0)1 489 3961-0

F. +43(0)1 489 3961-7

mail@szabo-scandic.com

www.szabo-scandic.com

[linkedin.com/company/szaboscandic](https://www.linkedin.com/company/szaboscandic) 

Rab 11A (m): 293T Lysate: sc-122877

BACKGROUND

The Ras-related superfamily of guanine nucleotide binding proteins, which includes the Ral/Rec, Rap, R-Ras, and Rho/Rab subfamilies, exhibit 30-60% homology with Ras p21. Accumulating data suggests an important role for Rab proteins, either in endocytosis or in biosynthetic protein transport. The transport of newly synthesized proteins from the endoplasmic reticulum to various stacks of the Golgi complex and to secretory vesicles involves at each stage the movement of carrier vesicles, a process that appears to involve Rab protein function. The possibility that Rab proteins might also direct the exocytosis from secretory vesicles to the plasma membrane is supported by the observation that in yeast, the SEC4 protein, which is 40% homologous to Rab proteins, is associated with secretory vesicles. Several members of the Rab subfamily have been identified, each of which is found at a particular stage of a membrane transport pathway.

REFERENCES

- Zahraoui, A., Touchot, N., Chardin, P. and Tavitian, A. 1989. The human Rab genes encode a family of GTP-binding proteins related to yeast YPT1 and SEC4 products involved in secretion. *J. Biol. Chem.* 264: 12394-12401.
- Chavier, P., Simons, K. and Zerial, M. 1992. The complexity of the Rab and Rho GTP-binding protein subfamilies revealed by a PCR cloning approach. *Gene* 112: 261-264.
- Baldini, G., Hohl, T., Lin, H.Y. and Lodish, H.F. 1992. Cloning of a Rab 3 isotype predominantly expressed in adipocytes. *Proc. Natl. Acad. Sci. USA* 89: 5049-5052.
- Chen, Y., Holcomb, C. and Moore, H.P. 1993. Expression and localization of two low molecular weight GTP-binding proteins, Rab 8 and Rab 10, by epitope tag. *Proc. Natl. Acad. Sci. USA* 90: 6508-6512.
- Karniguian, A., Zahroui, A. and Tavitian, A. 1993. Identification of small GTP-binding Rab proteins in human platelets: Thrombin-induced phosphorylation of Rab 3B, Rab 6, and Rab 8 proteins. *Proc. Natl. Acad. Sci. USA* 90: 7647-7651.
- Novick, P. and Brennwald, P. 1993. Friends and family: the role of the Rab GTPases in vesicular traffic. *Cell* 75: 597-601.
- Feng, Y., Press, B. and Wandinger-Ness, A. 1995. Rab 7: an important regulator of late endocytic membrane traffic. *J. Cell Biol.* 131: 1435-1452.
- Soldati, T., Rancano, C., Geissler, H. and Pfeffer, S.R. 1995. Rab 7 and Rab 9 are recruited onto late endosomes by biochemically distinguishable processes. *J. Biol. Chem.* 270: 25541-25548.
- Goldenring, J.R., Smith, J., Vaughan, J.D., Cameron, P., Hawkins, W. and Navarre, J. 1996. Rab 11 is an apically located small GTP-binding protein in epithelial tissues. *Am. J. Physiol.* 270: G515-G525.

CHROMOSOMAL LOCATION

Genetic locus: Rab11a (mouse) mapping to 9 C.

PRODUCT

Rab 11A (m): 293T Lysate represents a lysate of mouse Rab 11A transfected 293T cells and is provided as 100 µg protein in 200 µl SDS-PAGE buffer.

APPLICATIONS

Rab 11A (m): 293T Lysate is suitable as a Western Blotting positive control for mouse reactive Rab 11A antibodies. Recommended use: 10-20 µl per lane.

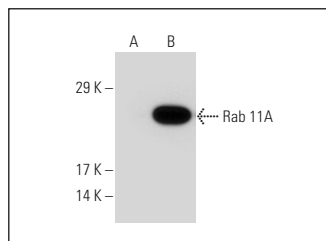
Control 293T Lysate: sc-117752 is available as a Western Blotting negative control lysate derived from non-transfected 293T cells.

Rab 11A (7C10): sc-58465 is recommended as a positive control antibody for Western Blot analysis of enhanced mouse Rab 11A expression in Rab 11A transfected 293T cells (starting dilution 1:100, dilution range 1:100-1:1,000).

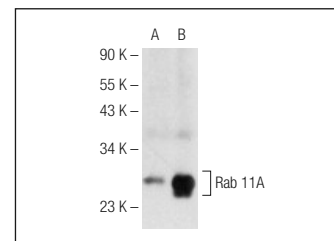
RECOMMENDED SUPPORT REAGENTS

To ensure optimal results, the following support reagents are recommended:
1) Western Blotting: use m-IgGκ BP-HRP: sc-516102 or m-IgGκ BP-HRP (Cruz Marker): sc-516102-CM (dilution range: 1:1000-1:10000), Cruz Marker™ Molecular Weight Standards: sc-2035, UltraCruz® Blocking Reagent: sc-516214 and Western Blotting Luminol Reagent: sc-2048.

DATA



Rab 11A (7C10): sc-58465. Western blot analysis of Rab 11A expression in non-transfected: sc-117752 (A) and mouse Rab 11A transfected: sc-122877 (B) 293T whole cell lysates.



Rab 11A (A-6): sc-166912. Western blot analysis of Rab 11A expression in non-transfected: sc-117752 (A) and mouse Rab 11A transfected: sc-122877 (B) 293T whole cell lysates.

STORAGE

Store at -20° C. Repeated freezing and thawing should be minimized. Sample vial should be boiled once prior to use. Non-hazardous. No MSDS required.

RESEARCH USE

For research use only, not for use in diagnostic procedures.

PROTOCOLS

See our web site at www.scbt.com for detailed protocols and support products.