



SZABO SCANDIC

Part of Europa Biosite

Produktinformation



Forschungsprodukte & Biochemikalien



Zellkultur & Verbrauchsmaterial



Diagnostik & molekulare Diagnostik



Laborgeräte & Service

Weitere Information auf den folgenden Seiten!
See the following pages for more information!



Lieferung & Zahlungsart

siehe unsere [Liefer- und Versandbedingungen](#)

Zuschläge

- Mindermengenzuschlag
- Trockeneiszuschlag
- Gefahrgutzuschlag
- Expressversand

SZABO-SCANDIC HandelsgmbH

Quellenstraße 110, A-1100 Wien

T. +43(0)1 489 3961-0

F. +43(0)1 489 3961-7

mail@szabo-scandic.com

www.szabo-scandic.com

[linkedin.com/company/szaboscandic](https://www.linkedin.com/company/szaboscandic) 

Rab 32 (m): 293T Lysate: sc-122901

BACKGROUND

Small GTP-binding proteins of the RAB family play essential roles in vesicle and granule targeting. Rab 32 is a 225 amino acid protein that belongs to the small GTPase superfamily and the Rab family. Rab 32 has an unusual GTP-binding sequence, DIAGQE, in place of the more common DTAGQE. Rab 32 acts as an A-kinase anchoring protein by binding to the type II regulatory sub-unit of protein kinase A and anchoring it to mitochondria. Also involved in synchronization of mitochondrial fission, Rab 32 is widely expressed with high levels in heart, liver, kidney, bone marrow, testis, colon and fetal lung. Rab 32 has been found to be frequently hypermethylated in microsatellite instability-high (MSI-H) colon cancers. Although Rab 32 methylation is rare in endometrial cancers, it is strongly associated with hMLH1 hypermethylation and MSI in gastric adenocarcinomas. The Rab 32 gene is conserved in chimpanzee, bovine, mouse, rat, chicken, zebrafish, fruit fly, mosquito and *C. elegans*, and maps to human chromosome 6q24.3.

REFERENCES

1. Bao, X., Faris, A.E., Jang, E.K. and Haslam, R.J. 2002. Molecular cloning, bacterial expression and properties of Rab31 and Rab32. *Eur. J. Biochem.* 269: 259-271.
2. Alto, N.M., Soderling, J. and Scott, J.D. 2002. Rab32 is an A-kinase anchoring protein and participates in mitochondrial dynamics. *J. Cell Biol.* 158: 659-668.
3. Pereira-Leal, J.B., Strom, M., Godfrey, R.F. and Seabra, M.C. 2003. Structural determinants of Rab and Rab escort protein interaction: Rab family motifs define a conserved binding surface. *Biochem. Biophys. Res. Commun.* 301: 92-97.
4. Mungall, A.J., Palmer, S.A., Sims, S.K., Edwards, C.A., Ashurst, J.L., Wilming, L., Jones, M.C., Horton, R., Hunt, S.E., Scott, C.E., Gilbert, J.G., Clamp, M.E., Bethel, G., Milne, S., Ainscough, R., Almeida, J.P., et al. 2003. The DNA sequence and analysis of human chromosome 6. *Nature* 425: 805-811.
5. Alto, N.M., Soderling, S.H., Hoshi, N., Langeberg, L.K., Fayos, R., Jennings, P.A. and Scott, J.D. 2003. Bioinformatic design of A-kinase anchoring protein-in silico: a potent and selective peptide antagonist of type II protein kinase A anchoring. *Proc. Natl. Acad. Sci. USA* 100: 4445-4450.
6. Shibata, D., Mori, Y., Cai, K., Zhang, L., Yin, J., Elahi, A., Hamelin, R., Wong, Y.F., Lo, W.K., Chung, T.K., Sato, F., Karpeh, M.S. and Meltzer, S.J. 2006. RAB32 hypermethylation and microsatellite instability in gastric and endometrial adenocarcinomas. *Int. J. Cancer* 119: 801-806.
7. Hirota, Y. and Tanaka, Y. 2009. A small GTPase, human Rab32, is required for the formation of autophagic vacuoles under basal conditions. *Cell. Mol. Life Sci.* 66: 2913-2932.

CHROMOSOMAL LOCATION

Genetic locus: Rab32 (mouse) mapping to 10 A1.

PRODUCT

Rab 32 (m): 293T Lysate represents a lysate of mouse Rab 32 transfected 293T cells and is provided as 100 µg protein in 200 µl SDS-PAGE buffer.

APPLICATIONS

Rab 32 (m): 293T Lysate is suitable as a Western Blotting positive control for mouse reactive Rab 32 antibodies. Recommended use: 10-20 µl per lane.

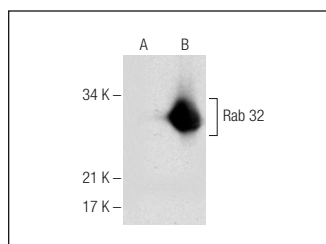
Control 293T Lysate: sc-117752 is available as a Western Blotting negative control lysate derived from non-transfected 293T cells.

Rab 32 (B-4): sc-390178 is recommended as a positive control antibody for Western Blot analysis of enhanced mouse Rab 32 expression in Rab 32 transfected 293T cells (starting dilution 1:100, dilution range 1:100-1:1,000).

RECOMMENDED SUPPORT REAGENTS

To ensure optimal results, the following support reagents are recommended:
 1) Western Blotting: use m-IgGκ BP-HRP: sc-516102 or m-IgGκ BP-HRP (Cruz Marker): sc-516102-CM (dilution range: 1:1000-1:10000), Cruz Marker™ Molecular Weight Standards: sc-2035, UltraCruz® Blocking Reagent: sc-516214 and Western Blotting Luminol Reagent: sc-2048.

DATA



Rab 32 (B-4): sc-390178. Western blot analysis of Rab 32 expression in non-transfected: sc-117752 (A) and mouse Rab 32 transfected: sc-122901 (B) 293T whole cell lysates.

STORAGE

Store at -20° C. Repeated freezing and thawing should be minimized. Sample vial should be boiled once prior to use. Non-hazardous. No MSDS required.

RESEARCH USE

For research use only, not for use in diagnostic procedures.

PROTOCOLS

See our web site at www.scbt.com for detailed protocols and support products.