



# SZABO SCANDIC

Part of Europa Biosite

## Produktinformation



Forschungsprodukte & Biochemikalien



Zellkultur & Verbrauchsmaterial



Diagnostik & molekulare Diagnostik



Laborgeräte & Service

Weitere Information auf den folgenden Seiten!  
See the following pages for more information!



### Lieferung & Zahlungsart

siehe unsere [Liefer- und Versandbedingungen](#)

### Zuschläge

- Mindermengenzuschlag
- Trockeneiszuschlag
- Gefahrgutzuschlag
- Expressversand

### SZABO-SCANDIC HandelsgmbH

Quellenstraße 110, A-1100 Wien

T. +43(0)1 489 3961-0

F. +43(0)1 489 3961-7

[mail@szabo-scandic.com](mailto:mail@szabo-scandic.com)

[www.szabo-scandic.com](http://www.szabo-scandic.com)

[linkedin.com/company/szaboscandic](https://www.linkedin.com/company/szaboscandic) 

# RecQL1 (m): 293T Lysate: sc-123053

## BACKGROUND

In humans, the RecQ helicase family includes WRN, BLM, RecQL1, RecQL4 and RecQL5 proteins, all of which contain a conserved helicase domain. WRN and BLM have been demonstrated to be the responsible genes in Werner and Bloom syndromes, respectively. RecQL1 and RecQL5 also belong to the human RecQ helicase family, but their correlation with genetic disorders, if any, is unknown. The gene encoding human RecQL4, which maps to chromosome 8q24.3, is believed to be the gene responsible for the development of Rothmund-Thomson syndrome (RTS). The levels of WRN, BLM, RecQL1, 4 and 5 are differentially upregulated to guarantee genomic stability in cells that are transformed or actively proliferating. In humans, RecQL1 and RecQL5 map to chromosome 12p12.1 and 17q25.1, respectively.

## REFERENCES

1. Seki, M., Miyazawa, H., Tada, S., Yanagisawa, J., Yamaoka, T., Hoshino, S., Ozawa, K., Eki, T., Nogami, M., Okumura, K., et al. 1994. Molecular cloning of cDNA encoding human DNA helicase Q1 which has homology to *Escherichia coli* RecQ helicase and localization of the gene at chromosome 12p12. *Nucleic Acids Res.* 22: 4566-4573.
2. Kitao, S., Shimamoto, A., Goto, M., Miller, R.W., Smithson, W.A., Lindor, N.M. and Furuichi, Y. 1999. Mutations in RecQL4 cause a subset of cases of Rothmund-Thomson syndrome. *Nat. Genet.* 22: 82-84.
3. Ohhata, T., Araki, R., Fukumura, R., Kuroiwa, A., Matsuda, Y., Tatsumi, K. and Abe, M. 2000. Cloning, genomic structure and chromosomal localization of the gene encoding mouse DNA helicase RecQ helicase protein-like 4. *Gene* 261: 251-258.
4. Kawabe, T., Tsuyama, N., Kitao, S., Nishikawa, K., Shimamoto, A., Shiratori, M., Matsumoto, T., Anno, K., Sato, T., Mitsui, Y., Seki, M., Enomoto, T., Goto, M., Ellis, N.A., Ide, T., Furuichi, Y. and Sugimoto, M. 2000. Differential regulation of human RecQ family helicases in cell transformation and cell cycle. *Oncogene* 19: 4764-4772.
5. Kawabe, Y., Seki, M., Seki, T., Wang, W.S., Imamura, O., Furuichi, Y., Saitoh, H. and Enomoto, T. 2000. Covalent modification of the Werner's syndrome gene product with the ubiquitin-related protein, SUMO-1. *J. Biol. Chem.* 275: 20963-20966.

## CHROMOSOMAL LOCATION

Genetic locus: Recql (mouse) mapping to 6 G2.

## PRODUCT

RecQL1 (m): 293T Lysate represents a lysate of mouse RecQL1 transfected 293T cells and is provided as 100 µg protein in 200 µl SDS-PAGE buffer.

## STORAGE

Store at -20° C. Repeated freezing and thawing should be minimized. Sample vial should be boiled once prior to use. Non-hazardous. No MSDS required.

## PROTOCOLS

See our web site at [www.scbt.com](http://www.scbt.com) for detailed protocols and support products.

## APPLICATIONS

RecQL1 (m): 293T Lysate is suitable as a Western Blotting positive control for mouse reactive RecQL1 antibodies. Recommended use: 10-20 µl per lane.

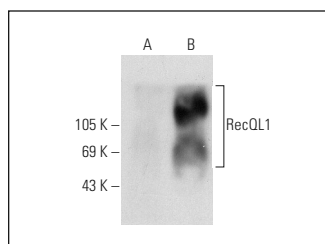
Control 293T Lysate: sc-117752 is available as a Western Blotting negative control lysate derived from non-transfected 293T cells.

RecQL1 (G-2): sc-166446 is recommended as a positive control antibody for Western Blot analysis of enhanced mouse RecQL1 expression in RecQL1 transfected 293T cells (starting dilution 1:100, dilution range 1:100-1:1,000).

## RECOMMENDED SUPPORT REAGENTS

To ensure optimal results, the following support reagents are recommended:  
1) Western Blotting: use m-IgGκ BP-HRP: sc-516102 or m-IgGκ BP-HRP (Cruz Marker): sc-516102-CM (dilution range: 1:1000-1:10000), Cruz Marker™ Molecular Weight Standards: sc-2035, UltraCruz® Blocking Reagent: sc-516214 and Western Blotting Luminol Reagent: sc-2048.

## DATA



RecQL1 (G-2): sc-166446. Western blot analysis of RecQL1 expression in non-transfected: sc-117752 (A) and mouse RecQL1 transfected: sc-123053 (B) 293T whole cell lysates.

## RESEARCH USE

For research use only, not for use in diagnostic procedures.