



SZABO SCANDIC

Part of Europa Biosite

Produktinformation



Forschungsprodukte & Biochemikalien



Zellkultur & Verbrauchsmaterial



Diagnostik & molekulare Diagnostik



Laborgeräte & Service

Weitere Information auf den folgenden Seiten!
See the following pages for more information!



Lieferung & Zahlungsart

siehe unsere [Liefer- und Versandbedingungen](#)

Zuschläge

- Mindermengenzuschlag
- Trockeneiszuschlag
- Gefahrgutzuschlag
- Expressversand

SZABO-SCANDIC HandelsgmbH

Quellenstraße 110, A-1100 Wien

T. +43(0)1 489 3961-0

F. +43(0)1 489 3961-7

mail@szabo-scandic.com

www.szabo-scandic.com

[linkedin.com/company/szaboscandic](https://www.linkedin.com/company/szaboscandic) 

Retinal RX (m): 293T Lysate: sc-123075

BACKGROUND

The homeobox DNA-binding domain is a 60 amino acid motif that is conserved among many species and functions to bind DNA via a helix-turn-helix structure, thereby playing a role in transcriptional regulation and the control of gene expression. Retinal RX, also known as RAX (retina and anterior neural fold homeobox), MCOP3 or RX, is a 346 amino acid protein that localizes to the nucleus and contains one OAR domain and one homeobox DNA-binding domain. Expressed in developing eye tissue, as well as in adult retina tissue, Retinal RX plays a crucial role in eye formation, specifically by regulating the specification and proliferation of retinal cells. Defects in the gene encoding Retinal RX are the cause of microphthalmia isolated type 3 (MCOP3), a heterogeneous disorder that is characterized by opacities of the cornea and lens and scarring of the retina and choroid.

REFERENCES

- Mathers, P.H., Grinberg, A., Mahon, K.A. and Jamrich, M. 1997. The RX homeobox gene is essential for vertebrate eye development. *Nature* 387: 603-607.
- Mathers, P.H. and Jamrich, M. 2000. Regulation of eye formation by the Rx and pax6 homeobox genes. *Cell. Mol. Life Sci.* 57: 186-194.
- Kimura, A., Singh, D., Wawrousek, E.F., Kikuchi, M., Nakamura, M. and Shinohara, T. 2000. Both PCE-1/RX and OTX/CRX interactions are necessary for photoreceptor-specific gene expression. *J. Biol. Chem.* 275: 1152-1160.
- Mikkola, I., Bruun, J.A., Holm, T. and Johansen, T. 2001. Superactivation of Pax-6-mediated transactivation from paired domain-binding sites by DNA-independent recruitment of different homeodomain proteins. *J. Biol. Chem.* 276: 4109-4118.
- Voronina, V.A., Kozhemyakina, E.A., O'Kernick, C.M., Kahn, N.D., Wenger, S.L., Linberg, J.V., Schneider, A.S. and Mathers, P.H. 2004. Mutations in the human RAX homeobox gene in a patient with anophthalmia and sclerocornea. *Hum. Mol. Genet.* 13: 315-322.
- Lequeux, L., Rio, M., Vigouroux, A., Titeux, M., Etchevers, H., Malecaze, F., Chassaing, N. and Calvas, P. 2008. Confirmation of RAX gene involvement in human anophthalmia. *Clin. Genet.* 74: 392-395.
- Danno, H., Michiue, T., Hitachi, K., Yukita, A., Ishiura, S. and Asashima, M. 2008. Molecular links among the causative genes for ocular malformation: Otx2 and Sox2 coregulate Rax expression. *Proc. Natl. Acad. Sci. USA* 105: 5408-5413.
- London, N.J., Kessler, P., Williams, B., Pauer, G.J., Hagstrom, S.A. and Traboulsi, E.I. 2009. Sequence alterations in RX in patients with microphthalmia, anophthalmia, and coloboma. *Mol. Vis.* 15: 162-167.
- Online Mendelian Inheritance in Man, OMIM[™]. 2009. Johns Hopkins University, Baltimore, MD. MIM Number: 601881. World Wide Web URL: <http://www.ncbi.nlm.nih.gov/omim/>

STORAGE

Store at -20° C. Repeated freezing and thawing should be minimized. Sample vial should be boiled once prior to use. Non-hazardous. No MSDS required.

CHROMOSOMAL LOCATION

Genetic locus: Rax (mouse) mapping to 18 E1.

PRODUCT

Retinal RX (m): 293T Lysate represents a lysate of mouse Retinal RX transfected 293T cells and is provided as 100 µg protein in 200 µl SDS-PAGE buffer.

APPLICATIONS

Retinal RX (m): 293T Lysate is suitable as a Western Blotting positive control for mouse reactive Retinal RX antibodies. Recommended use: 10-20 µl per lane.

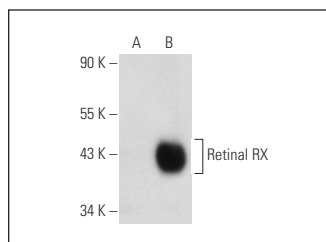
Control 293T Lysate: sc-117752 is available as a Western Blotting negative control lysate derived from non-transfected 293T cells.

Retinal RX (G-12): sc-271889 is recommended as a positive control antibody for Western Blot analysis of enhanced mouse Retinal RX expression in Retinal RX transfected 293T cells (starting dilution 1:100, dilution range 1:100-1:1,000).

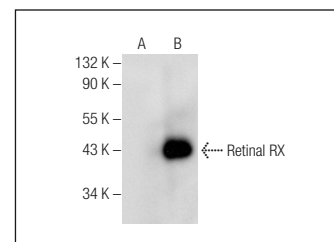
RECOMMENDED SUPPORT REAGENTS

To ensure optimal results, the following support reagents are recommended:
1) Western Blotting: use m-IgGκ BP-HRP: sc-516102 or m-IgGκ BP-HRP (Cruz Marker): sc-516102-CM (dilution range: 1:1000-1:10000), Cruz Marker[™] Molecular Weight Standards: sc-2035, UltraCruz[®] Blocking Reagent: sc-516214 and Western Blotting Luminol Reagent: sc-2048.

DATA



Retinal RX (G-12): sc-271889. Western blot analysis of Retinal RX expression in non-transfected: sc-117752 (A) and mouse Retinal RX transfected: sc-123075 (B) 293T whole cell lysates.



Retinal RX (H-7): sc-376837. Western blot analysis of Retinal RX expression in non-transfected: sc-117752 (A) and mouse Retinal RX transfected: sc-123075 (B) 293T whole cell lysates.

RESEARCH USE

For research use only, not for use in diagnostic procedures.

PROTOCOLS

See our web site at www.scbt.com for detailed protocols and support products.