



SZABO SCANDIC

Part of Europa Biosite

Produktinformation



Forschungsprodukte & Biochemikalien



Zellkultur & Verbrauchsmaterial



Diagnostik & molekulare Diagnostik



Laborgeräte & Service

Weitere Information auf den folgenden Seiten!
See the following pages for more information!



Lieferung & Zahlungsart

siehe unsere [Liefer- und Versandbedingungen](#)

Zuschläge

- Mindermengenzuschlag
- Trockeneiszuschlag
- Gefahrgutzuschlag
- Expressversand

SZABO-SCANDIC HandelsgmbH

Quellenstraße 110, A-1100 Wien

T. +43(0)1 489 3961-0

F. +43(0)1 489 3961-7

mail@szabo-scandic.com

www.szabo-scandic.com

[linkedin.com/company/szaboscandic](https://www.linkedin.com/company/szaboscandic) 

RGS16 (m): 293T Lysate: sc-123100

BACKGROUND

Regulators of G-protein signaling (RGS proteins) are a family of highly diverse, multifunctional signaling proteins that share a conserved 120 amino acid domain (RGS domain). RGS domains bind directly to activated G_{α} subunits and act as GTPase-activating proteins (GAPs) to attenuate and/or modulate hormone and neurotransmitter receptor-initiated signaling by both G_{α} -GTP and $G_{\beta\gamma}$. RGS proteins shorten the lifetime of the activated G protein. RGS16 is expressed at high levels in retina. Overexpression of RGS16 inhibits G protein-coupled mitogenic signal transduction and activation of the mitogen-activated protein kinase (MAPK) signaling cascade. RGS16 enhances the rate of GTP-hydrolysis by transducin, suggesting that RGS16 may play a role in regulating the kinetics of signaling in the phototransduction cascade. The gene which encodes RGS16 maps to human chromosome 1q25.3.

REFERENCES

- Chen, C.K., et al. 1996. RGS-r, a retinal specific RGS protein, binds an intermediate conformation of transducin and enhances recycling. Proc. Natl. Acad. Sci. USA 93: 12885-12889.
- Kardestuncer, T., et al. 1998. Cardiac myocytes express mRNA for ten RGS proteins: changes in RGS mRNA expression in ventricular myocytes and cultured atria. FEBS Lett. 438: 285-288.
- Snow, B.E., et al. 1998. Cloning of a retinally abundant regulator of G protein signaling (RGS-r/RGS16): genomic structure and chromosomal localization of the human gene. Gene 206: 247-253.
- Hepler, J.R. 1999. Emerging roles for RGS proteins in cell signalling. Trends Pharmacol. Sci. 20: 376-382.
- Online Mendelian Inheritance in Man, OMIM™. 2001. Johns Hopkins University, Baltimore, MD. MIM Number: 602514. World Wide Web URL: <http://www.ncbi.nlm.nih.gov/omim/>

CHROMOSOMAL LOCATION

Genetic locus: Rgs16 (mouse) mapping to 1 G3.

PRODUCT

RGS16 (m): 293T Lysate represents a lysate of mouse RGS16 transfected 293T cells and is provided as 100 µg protein in 200 µl SDS-PAGE buffer.

STORAGE

Store at -20° C. Repeated freezing and thawing should be minimized. Sample vial should be boiled once prior to use. Non-hazardous. No MSDS required.

APPLICATIONS

RGS16 (m): 293T Lysate is suitable as a Western Blotting positive control for mouse reactive RGS16 antibodies. Recommended use: 10-20 µl per lane.

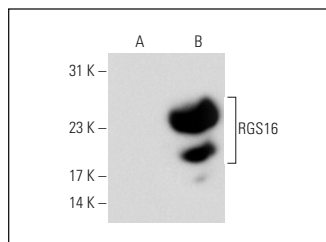
Control 293T Lysate: sc-117752 is available as a Western Blotting negative control lysate derived from non-transfected 293T cells.

RGS16 (A-9): sc-166083 is recommended as a positive control antibody for Western Blot analysis of enhanced mouse RGS16 expression in RGS16 transfected 293T cells (starting dilution 1:100, dilution range 1:100-1:1,000).

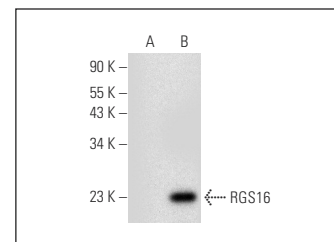
RECOMMENDED SUPPORT REAGENTS

To ensure optimal results, the following support reagents are recommended:
1) Western Blotting: use m-IgGκ BP-HRP: sc-516102 or m-IgGκ BP-HRP (Cruz Marker): sc-516102-CM (dilution range: 1:1000-1:10000), Cruz Marker™ Molecular Weight Standards: sc-2035, UltraCruz® Blocking Reagent: sc-516214 and Western Blotting Luminol Reagent: sc-2048.

DATA



RGS16 (A-9): sc-166083. Western blot analysis of RGS16 expression in non-transfected: sc-117752 (A) and mouse RGS16 transfected: sc-123100 (B) 293T whole cell lysates.



RGS16 (F-9): sc-398120. Western blot analysis of RGS16 expression in non-transfected: sc-117752 (A) and mouse RGS16 transfected: sc-123100 (B) 293T whole cell lysates.

RESEARCH USE

For research use only, not for use in diagnostic procedures.

PROTOCOLS

See our web site at www.scbt.com for detailed protocols and support products.