



# SZABO SCANDIC

Part of Europa Biosite

## Produktinformation



Forschungsprodukte & Biochemikalien



Zellkultur & Verbrauchsmaterial



Diagnostik & molekulare Diagnostik



Laborgeräte & Service

Weitere Information auf den folgenden Seiten!  
See the following pages for more information!



### Lieferung & Zahlungsart

siehe unsere [Liefer- und Versandbedingungen](#)

### Zuschläge

- Mindermengenzuschlag
- Trockeneiszuschlag
- Gefahrgutzuschlag
- Expressversand

### SZABO-SCANDIC HandelsgmbH

Quellenstraße 110, A-1100 Wien

T. +43(0)1 489 3961-0

F. +43(0)1 489 3961-7

[mail@szabo-scandic.com](mailto:mail@szabo-scandic.com)

[www.szabo-scandic.com](http://www.szabo-scandic.com)

[linkedin.com/company/szaboscandic](https://www.linkedin.com/company/szaboscandic) 

# SCYL3 (m): 293T Lysate: sc-123396

## BACKGROUND

SCYL3 (SCY1-like 3), also known as protein-associating with the carboxyl-terminal domain of ezrin, is a 742 amino acid protein that belongs to the protein kinase superfamily. The SCYL3 protein contains an N-terminal myristoylation consensus sequence, followed by a protein kinase domain, two tandemly arrayed HEAT motifs composed of pairs of antiparallel  $\alpha$  helices, and a C-terminal ezrin-binding domain. The SCYL3 protein may be phosphorylated. Ubiquitously expressed, the SCYL3 protein colocalizes with ezrin, actin and HCAM in lamellipodia. The SCYL3 protein may be myristoylated, which may target SCYL3 to Golgi compartment. Existing as 2 alternatively spliced isoforms, the SCYL3 gene contains 14 exons, is conserved in chimpanzee, canine, bovine, mouse, rat, chicken, zebrafish, fruit fly and mosquito, and maps to human chromosome 1q24.2.

## REFERENCES

- Sullivan, A., Uff, C.R., Isacke, C.M. and Thorne, R.F. 2003. PACE-1, a novel protein that interacts with the C-terminal domain of ezrin. *Exp. Cell Res.* 284: 224-238.
- Online Mendelian Inheritance in Man, OMIM™. 2003. Johns Hopkins University, Baltimore, MD. MIM Number: 608192. World Wide Web URL: <http://www.ncbi.nlm.nih.gov/omim/>
- Maurer-Stroh, S., Gouda, M., Novatchkova, M., Schleiffer, A., Schneider, G., Sirota, F.L., Wildpaner, M., Hayashi, N. and Eisenhaber, F. 2004. MYRbase: analysis of genome-wide glycine myristoylation enlarges the functional spectrum of eukaryotic myristoylated proteins. *Genome Biol.* 5: R21.
- Weise, A., Starke, H., Mrasek, K., Claussen, U. and Liehr, T. 2005. New insights into the evolution of chromosome 1. *Cytogenet. Genome Res.* 108: 217-222.
- Gregory, S.G., Barlow, K.F., McLay, K.E., Kaul, R., Swarbreck, D., Dunham, A., Scott, C.E., Howe, K.L., Woodfine, K., Spencer, C.C., Jones, M.C., Gillson, C., Searle, S., Zhou, Y., Kokocinski, F., McDonald, L., Evans, R., et al. 2006. The DNA sequence and biological annotation of human chromosome 1. *Nature* 441: 315-321.
- Cheung, C.L., Chan, B.Y., Chan, V., Ikegawa, S., Kou, I., Ngai, H., Smith, D., Luk, K.D., Huang, Q.Y., Mori, S., Sham, P.C. and Kung, A.W. 2009. Pre-B-cell leukemia homeobox 1 (PBX1) shows functional and possible genetic association with bone mineral density variation. *Hum. Mol. Genet.* 18: 679-687.
- Traynor, B.J., Nalls, M., Lai, S.L., Gibbs, R.J., Schymick, J.C., Arepalli, S., Hernandez, D., van der Brug, M.P., Johnson, J.O., Dillman, A., Cookson, M., Moglia, C., Calvo, A., Restagno, G., Mora, G. and Chiò, A. 2010. Kinesin-associated protein 3 (KIFAP3) has no effect on survival in a population-based cohort of ALS patients. *Proc. Natl. Acad. Sci. USA* 107: 12335-12338.

## CHROMOSOMAL LOCATION

Genetic locus: Scyl3 (mouse) mapping to 1 H2.2.

## RESEARCH USE

For research use only, not for use in diagnostic procedures.

## PRODUCT

SCYL3 (m): 293T Lysate represents a lysate of mouse SCYL3 transfected 293T cells and is provided as 100  $\mu$ g protein in 200  $\mu$ l SDS-PAGE buffer.

## APPLICATIONS

SCYL3 (m): 293T Lysate is suitable as a Western Blotting positive control for mouse reactive SCYL3 antibodies. Recommended use: 10-20  $\mu$ l per lane.

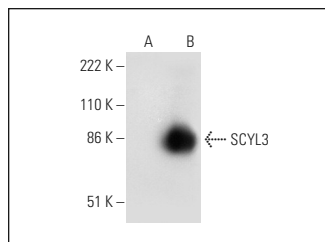
Control 293T Lysate: sc-117752 is available as a Western Blotting negative control lysate derived from non-transfected 293T cells.

SCYL3 (G-9): sc-393945 is recommended as a positive control antibody for Western Blot analysis of enhanced mouse SCYL3 expression in SCYL3 transfected 293T cells (starting dilution 1:100, dilution range 1:100-1:1,000).

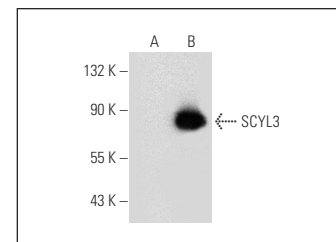
## RECOMMENDED SUPPORT REAGENTS

To ensure optimal results, the following support reagents are recommended:  
 1) Western Blotting: use m-IgG $\kappa$  BP-HRP: sc-516102 or m-IgG $\kappa$  BP-HRP (Cruz Marker): sc-516102-CM (dilution range: 1:1000-1:10000), Cruz Marker™ Molecular Weight Standards: sc-2035, UltraCruz® Blocking Reagent: sc-516214 and Western Blotting Luminol Reagent: sc-2048.

## DATA



SCYL3 (G-9): sc-393945. Western blot analysis of SCYL3 expression in non-transfected: sc-117752 (A) and mouse SCYL3 transfected: sc-123396 (B) 293T whole cell lysates.



SCYL3 (E-7): sc-398106. Western blot analysis of SCYL3 expression in non-transfected: sc-117752 (A) and mouse SCYL3 transfected: sc-123396 (B) 293T whole cell lysates.

## STORAGE

Store at -20° C. Repeated freezing and thawing should be minimized. Sample vial should be boiled once prior to use. Non-hazardous. No MSDS required.

## PROTOCOLS

See our web site at [www.scbt.com](http://www.scbt.com) for detailed protocols and support products.