



SZABO SCANDIC

Part of Europa Biosite

Produktinformation



Forschungsprodukte & Biochemikalien



Zellkultur & Verbrauchsmaterial



Diagnostik & molekulare Diagnostik



Laborgeräte & Service

Weitere Information auf den folgenden Seiten!
See the following pages for more information!



Lieferung & Zahlungsart

siehe unsere [Liefer- und Versandbedingungen](#)

Zuschläge

- Mindermengenzuschlag
- Trockeneiszuschlag
- Gefahrgutzuschlag
- Expressversand

SZABO-SCANDIC HandelsgmbH

Quellenstraße 110, A-1100 Wien

T. +43(0)1 489 3961-0

F. +43(0)1 489 3961-7

mail@szabo-scandic.com

www.szabo-scandic.com

[linkedin.com/company/szaboscandic](https://www.linkedin.com/company/szaboscandic) 

SDSL (m): 293T Lysate: sc-123413

BACKGROUND

L-serine dehydratase, known simply as serine dehydratase (SDS), is one of three main enzymes that are involved in the metabolism of glycine and serine. Specifically, L-serine dehydratase localizes to the liver and functions to enzymatically convert L-serine to pyruvate and ammonia in a pyridoxal phosphate-dependent manner. SDSL (serine dehydratase-like), also known as SDS-RS1 or serine dehydratase 2, is a 329 amino acid protein that, like L-serine dehydratase, uses pyridoxal phosphate. One of several members of the serine/threonine dehydratase family, SDSL may function as a serine-specific dehydratase that plays a role in protein metabolism.

REFERENCES

1. Ogawa, H., Gomi, T., Konishi, K., Date, T., Nakashima, H., Nose, K., Matsuda, Y., Peraino, C., Pitot, H.C. and Fujioka, M. 1989. Human liver serine dehydratase. cDNA cloning and sequence homology with hydroxyamino acid dehydratases from other sources. *J. Biol. Chem.* 264: 15818-15823.
2. Xue, H.H., Sakaguchi, T., Fujie, M., Ogawa, H. and Ichiyama, A. 1999. Flux of the L-serine metabolism in rabbit, human, and dog livers. Substantial contributions of both mitochondrial and peroxisomal serine:pyruvate/alanine:glyoxylate aminotransferase. *J. Biol. Chem.* 274: 16028-16033.
3. Sun, L., Li, X., Dong, Y., Yang, M., Liu, Y., Han, X., Zhang, X., Pang, H. and Rao, Z. 2003. Crystallization and preliminary crystallographic analysis of human serine dehydratase. *Acta Crystallogr. D Biol. Crystallogr.* 59: 2297-2299.
4. Kashii, T., Gomi, T., Oya, T., Ishii, Y., Oda, H., Maruyama, M., Kobayashi, M., Masuda, T., Yamazaki, M., Nagata, T., Tsukada, K., Nakajima, A., Tatsu, K., Mori, H., Takusagawa, F., Ogawa, H. and Pitot, H.C. 2005. Some biochemical and histochemical properties of human liver serine dehydratase. *Int. J. Biochem. Cell Biol.* 37: 574-589.
5. López-Flores, I., Barroso, J.B., Valderrama, R., Esteban, F.J., Martínez-Lara, E., Luque, F., Peinado, M.A., Ogawa, H., Lupiáñez, J.A. and Peragón, J. 2005. Serine dehydratase expression decreases in rat livers injured by chronic thioacetamide ingestion. *Mol. Cell. Biochem.* 268: 33-43.

CHROMOSOMAL LOCATION

Genetic locus: *Sdsl* (mouse) mapping to 5 F.

PRODUCT

SDSL (m): 293T Lysate represents a lysate of mouse SDSL transfected 293T cells and is provided as 100 µg protein in 200 µl SDS-PAGE buffer.

STORAGE

Store at -20° C. Repeated freezing and thawing should be minimized. Sample vial should be boiled once prior to use. Non-hazardous. No MSDS required.

PROTOCOLS

See our web site at www.scbt.com for detailed protocols and support products.

APPLICATIONS

SDSL (m): 293T Lysate is suitable as a Western Blotting positive control for mouse reactive SDSL antibodies. Recommended use: 10-20 µl per lane.

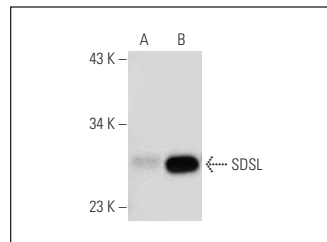
Control 293T Lysate: sc-117752 is available as a Western Blotting negative control lysate derived from non-transfected 293T cells.

SDSL (73-K5): sc-100586 is recommended as a positive control antibody for Western Blot analysis of enhanced mouse SDSL expression in SDSL transfected 293T cells (starting dilution 1:100, dilution range 1:100-1:1,000).

RECOMMENDED SUPPORT REAGENTS

To ensure optimal results, the following support reagents are recommended:
 1) Western Blotting: use m-IgGκ BP-HRP: sc-516102 or m-IgGκ BP-HRP (Cruz Marker): sc-516102-CM (dilution range: 1:1000-1:10000), Cruz Marker™ Molecular Weight Standards: sc-2035, UltraCruz® Blocking Reagent: sc-516214 and Western Blotting Luminol Reagent: sc-2048.

DATA



SDSL (73-K5): sc-100586. Western blot analysis of SDSL expression in non-transfected: sc-117752 (A) and mouse SDSL transfected: sc-123413 (B) 293T whole cell lysates.

RESEARCH USE

For research use only, not for use in diagnostic procedures.