



# SZABO SCANDIC

Part of Europa Biosite

## Produktinformation



Forschungsprodukte & Biochemikalien



Zellkultur & Verbrauchsmaterial



Diagnostik & molekulare Diagnostik



Laborgeräte & Service

Weitere Information auf den folgenden Seiten!  
See the following pages for more information!



### Lieferung & Zahlungsart

siehe unsere [Liefer- und Versandbedingungen](#)

### Zuschläge

- Mindermengenzuschlag
- Trockeneiszuschlag
- Gefahrgutzuschlag
- Expressversand

### SZABO-SCANDIC HandelsgmbH

Quellenstraße 110, A-1100 Wien

T. +43(0)1 489 3961-0

F. +43(0)1 489 3961-7

[mail@szabo-scandic.com](mailto:mail@szabo-scandic.com)

[www.szabo-scandic.com](http://www.szabo-scandic.com)

[linkedin.com/company/szaboscandic](https://www.linkedin.com/company/szaboscandic)

# Sec8 (m): 293T Lysate: sc-123430

## BACKGROUND

Exocytosis is crucial in membrane trafficking and it mediates hormone and neurotransmitter secretion out of the cell, as well as the incorporation of membrane proteins and lipids to the plasma membrane. It is crucial for cell-cell communication, cell growth and cell polarity. The exocyst complex is a multi-protein complex that consists of Sec3, Sec5, Sec6, Sec8, Sec10, Sec15, Exo70 and Exo84, and is essential for targeting exocytic vesicles to specific docking sites on the plasma membrane. The exocyst complex inhibits tubulin polymerization *in vitro*, suggesting that the exocyst complex is important for modulating the microtubule dynamics that underlie exocytosis. Sec8, also known as EXOC4 (exocyst complex component 4), REC8 or SEC8L1, is one of eight protein subunits composing the mammalian exocyst complex. Human Sec8 maps to chromosome 7q33.

## REFERENCES

1. Potenza, M., et al. 1992. Sec6 encodes an 85 kDa soluble protein required for exocytosis in yeast. *Yeast* 8: 549-558.
2. TerBush, D.R., et al. 1995. Sec6, Sec8, and Sec15 are components of a multisubunit complex which localizes to small bud tips in *Saccharomyces cerevisiae*. *J. Cell Biol.* 130: 299-312.
3. Ting, A.E., et al. 1995. rSec6 and rSec8, mammalian homologs of yeast proteins essential for secretion. *Proc. Natl. Acad. Sci. USA* 92: 9613-9617.
4. Friedrich, G.A., et al. 1997. The secretory protein Sec8 is required for paraxial mesoderm formation in the mouse. *Dev. Biol.* 192: 364-374.
5. Grindstaff, K.K., et al. 1998. Sec6/8 complex is recruited to cell-cell contacts and specifies transport vesicle delivery to the basal-lateral membrane in epithelial cells. *Cell* 93: 731-740.
6. Hsu, S.C., et al. 1999. Targeting vesicles to specific sites on the plasma membrane: the role of the Sec6/8 complex. *Trends Cell Biol.* 9: 150-153.
7. Matern, H.T., et al. 2001. The Sec6/8 complex in mammalian cells: characterization of mammalian Sec3, subunit interactions, and expression of subunits in polarized cells. *Proc. Natl. Acad. Sci. USA* 98: 9648-9653.
8. Brymora, A., et al. 2001. The brain exocyst complex interacts with Ral A in a GTP-dependent manner: identification of a novel mammalian Sec3 gene and a second Sec15 gene. *J. Biol. Chem.* 276: 29792-29797.
9. Swiss-Prot/TrEMBL (O60645). World Wide Web URL: <http://www.expasy.ch/sprot/sprot-top.html>

## CHROMOSOMAL LOCATION

Genetic locus: Exoc4 (mouse) mapping to 6 A3.3.

## PRODUCT

Sec8 (m): 293T Lysate represents a lysate of mouse Sec8 transfected 293T cells and is provided as 100 µg protein in 200 µl SDS-PAGE buffer.

## STORAGE

Store at -20° C. Repeated freezing and thawing should be minimized. Sample vial should be boiled once prior to use. Non-hazardous. No MSDS required.

## APPLICATIONS

Sec8 (m): 293T Lysate is suitable as a Western Blotting positive control for mouse reactive Sec8 antibodies. Recommended use: 10-20 µl per lane.

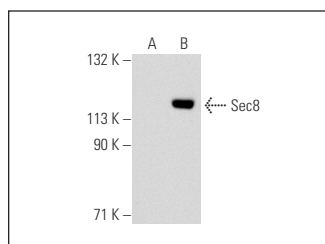
Control 293T Lysate: sc-117752 is available as a Western Blotting negative control lysate derived from non-transfected 293T cells.

Sec8 (LB-2): sc-100734 is recommended as a positive control antibody for Western Blot analysis of enhanced mouse Sec8 expression in Sec8 transfected 293T cells (starting dilution 1:100, dilution range 1:100-1:1,000).

## RECOMMENDED SUPPORT REAGENTS

To ensure optimal results, the following support reagents are recommended: 1) Western Blotting: use m-IgGκ BP-HRP: sc-516102 or m-IgGκ BP-HRP (Cruz Marker): sc-516102-CM (dilution range: 1:1000-1:10000), Cruz Marker™ Molecular Weight Standards: sc-2035, UltraCruz® Blocking Reagent: sc-516214 and Western Blotting Luminol Reagent: sc-2048.

## DATA



Sec8 (LB-2): sc-100734. Western blot analysis of Sec8 expression in non-transfected: sc-117752 (A) and mouse Sec8 transfected: sc-123430 (B) 293T whole cell lysates.

## RESEARCH USE

For research use only, not for use in diagnostic procedures.

## PROTOCOLS

See our web site at [www.scbt.com](http://www.scbt.com) for detailed protocols and support products.