



SZABO SCANDIC

Part of Europa Biosite

Produktinformation



Forschungsprodukte & Biochemikalien



Zellkultur & Verbrauchsmaterial



Diagnostik & molekulare Diagnostik



Laborgeräte & Service

Weitere Information auf den folgenden Seiten!
See the following pages for more information!



Lieferung & Zahlungsart

siehe unsere [Liefer- und Versandbedingungen](#)

Zuschläge

- Mindermengenzuschlag
- Trockeneiszuschlag
- Gefahrgutzuschlag
- Expressversand

SZABO-SCANDIC HandelsgmbH

Quellenstraße 110, A-1100 Wien

T. +43(0)1 489 3961-0

F. +43(0)1 489 3961-7

mail@szabo-scandic.com

www.szabo-scandic.com

[linkedin.com/company/szaboscandic](https://www.linkedin.com/company/szaboscandic) 

SerpinB6 (m): 293T Lysate: sc-123498

BACKGROUND

Members of the serine protease inhibitor superfamily are collectively called serpins. Inhibitory serpins typically form 1:1 complexes with their target proteases, which are often SDS-stable associations. SerpinB6, also known as protease inhibitor 6 (PI-6) in human and Spi3 in mouse, is a serine protease inhibitor with both antitrypsin and antichymotrypsin activity. Although most serpins are secreted glycoproteins that regulate extracellular proteases, SerpinB6 lacks classical nuclear localization, exhibiting primarily cytoplasmic distribution, and is not secreted by conventional methods. SerpinB6 is present in most tissues in capillary endothelial cells, platelets, epithelial cells, monocytes and granulocytes. SerpinB6 binds the arginine-selective protease human kallikrein 2 (hK2) as well as the monocyte and granulocyte azurophilic granule protease cathepsin G. In mouse, there are three SerpinB6 genes, namely SerpinB6a, SerpinB6b and SerpinB6c.

REFERENCES

1. Sun, J., Rose, J. and Bird, P. 1995. Gene structure, chromosomal localization, and expression of the murine homologue of human proteinase inhibitor (PI-6) suggests a divergence of PI-6 from the ovalbumin serpins. *J. Biol. Chem.* 270: 16089-16096.
2. Scott, F., Coughlin, P., Bird, C., Cerruti, L., Hayman, J. and Bird, P. 1996. Proteinase inhibitor 6 cannot be secreted, which suggests it is a new type of cellular serpin. *J. Biol. Chem.* 271: 1605-1612.
3. Scott, F., Hirst, C., Sun, J., Bird, C., Bottomley, S. and Bird, P. 1999. The intracellular serpin proteinase inhibitor 6 is expressed in monocytes and granulocytes and is a potent inhibitor of the azurophilic granule protease, cathepsin G. *Blood* 93: 2089-2097.
4. Mikolajczyk, S., Millar, L., Marker, K., Rittenhouse, H., Wolfert, R., Marks, L., Charlesworth, M. and Tindall, D. 1999. Identification of a novel complex between human kallikrein 2 and protease inhibitor-6 in prostate cancer tissue. *Cancer Res.* 59: 3927-3930.
5. Saedi, M., Zhu, Z., Marker, K., Liu, R., Carpenter, P., Rittenhouse, H. and Mikolajczyk, S. 2001. Human kallikrein 2 (hK2), but not prostate-specific antigen (PSA), rapidly complexes with protease inhibitor 6 (PI-6) released from prostate carcinoma cells. *Int. J. Cancer* 94: 558-563.
6. Bird, C., Blink, E., Hirst, C., Buzza, M., Steele, P., Sun, J., Jans, D. and Bird, P. 2001. Nucleocytoplasmic distribution of the ovalbumin serpin PI-9 requires a nonconventional nuclear import pathway and the export factor Crm1. *Mol. Cell. Biol.* 16: 5396-5407.

CHROMOSOMAL LOCATION

Genetic locus: Serpinb6a (mouse) mapping to 13 A3.3.

PRODUCT

SerpinB6 (m): 293T Lysate represents a lysate of mouse SerpinB6 transfected 293T cells and is provided as 100 µg protein in 200 µl SDS-PAGE buffer.

STORAGE

Store at -20° C. Repeated freezing and thawing should be minimized. Sample vial should be boiled once prior to use. Non-hazardous. No MSDS required.

APPLICATIONS

SerpinB6 (m): 293T Lysate is suitable as a Western Blotting positive control for mouse reactive SerpinB6 antibodies. Recommended use: 10-20 µl per lane.

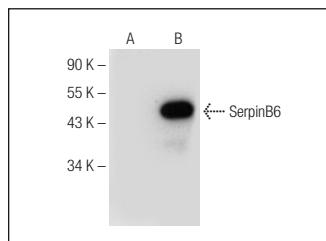
Control 293T Lysate: sc-117752 is available as a Western Blotting negative control lysate derived from non-transfected 293T cells.

SerpinB6 (F-5): sc-374535 is recommended as a positive control antibody for Western Blot analysis of enhanced mouse SerpinB6 expression in SerpinB6 transfected 293T cells (starting dilution 1:100, dilution range 1:100-1:1,000).

RECOMMENDED SUPPORT REAGENTS

To ensure optimal results, the following support reagents are recommended: 1) Western Blotting: use m-IgGκ BP-HRP: sc-516102 or m-IgGκ BP-HRP (Cruz Marker): sc-516102-CM (dilution range: 1:1000-1:10000), Cruz Marker™ Molecular Weight Standards: sc-2035, UltraCruz® Blocking Reagent: sc-516214 and Western Blotting Luminol Reagent: sc-2048.

DATA



SerpinB6 (F-5): sc-374535. Western blot analysis of SerpinB6 expression in non-transfected: sc-117752 (A) and mouse SerpinB6 transfected: sc-123498 (B) 293T whole cell lysates.

RESEARCH USE

For research use only, not for use in diagnostic procedures.

PROTOCOLS

See our web site at www.scbt.com for detailed protocols and support products.