



SZABO SCANDIC

Part of Europa Biosite

Produktinformation



Forschungsprodukte & Biochemikalien



Zellkultur & Verbrauchsmaterial



Diagnostik & molekulare Diagnostik



Laborgeräte & Service

Weitere Information auf den folgenden Seiten!
See the following pages for more information!



Lieferung & Zahlungsart

siehe unsere [Liefer- und Versandbedingungen](#)

Zuschläge

- Mindermengenzuschlag
- Trockeneiszuschlag
- Gefahrgutzuschlag
- Expressversand

SZABO-SCANDIC HandelsgmbH

Quellenstraße 110, A-1100 Wien

T. +43(0)1 489 3961-0

F. +43(0)1 489 3961-7

mail@szabo-scandic.com

www.szabo-scandic.com

[linkedin.com/company/szaboscandic](https://www.linkedin.com/company/szaboscandic) 

TCP-1 θ (m): 293T Lysate: sc-123954

BACKGROUND

The protein TCP-1 (T complex polypeptide 1) is a subunit of the hetero-oligomeric complex CCT (chaperonin containing TCP-1) present in the eukaryotic cytosol. The CCT of eukaryotic cytosol is composed of eight different subunit species, TCP-1 α , β , γ , δ , ϵ , ζ , η and θ , each encoded by a different gene. Two ζ subunits have been described: TCP-1 ζ (also designated TCP-1 ζ 1) and TCP-1 ζ 2. TCP-1 subunits are proposed to have independent functions in folding its *in vivo* substrates, the actins and tubulins. TCP-1 was first identified in the mouse as relevant for tail-less and embryonic lethal phenotypes. Sequences homologous to TCP-1 have been isolated in several other species, and the yeast TCP-1 has been shown to encode a molecular chaperone for Actin and Tubulin. TCP-1 found in mammalian cells and yeast plays an important role in the folding of cytosolic proteins.

REFERENCES

- Ahnert, V., May, C., Gerke, R. and Kindl, H. 1996. Cucumber T complex protein. Molecular cloning, bacterial expression and characterization within a 22-S cytosolic complex in cotyledons and hypocotyls. *Eur. J. Biochem.* 235: 114-119.
- Iijima, M., Shimizu, H., Tanaka, Y. and Urushihara, H. 1998. A *Dictyostelium discoideum* homologue to TCP-1 is essential for growth and development. *Gene* 213: 101-106.
- Ritco-Vonsovici, M. and Willison, K.R. 2000. Defining the eukaryotic cytosolic chaperonin-binding sites in human tubulins. *J. Mol. Biol.* 304: 81-98.
- Hynes, G.M. and Willison, K.R. 2000. Individual subunits of the eukaryotic cytosolic chaperonin mediate interactions with binding sites located on subdomains of β -Actin. *J. Biol. Chem.* 275: 18985-18994.
- Campos, E.G. and Hamdan, F.F. 2000. Cloning of the chaperonin T complex polypeptide 1 gene from *Schistosoma mansoni* and studies of its expression levels under heat shock and oxidative stress. *Parasitol. Res.* 86: 253-258.
- Yokota, S.I., Yanagi, H., Yura, T. and Kubota, H. 2000. Upregulation of cytosolic chaperonin CCT subunits during recovery from chemical stress that causes accumulation of unfolded proteins. *Eur. J. Biochem.* 267: 1658-1664.

CHROMOSOMAL LOCATION

Genetic locus: Cct8 (mouse) mapping to 16 C3.3.

PRODUCT

TCP-1 θ (m): 293T Lysate represents a lysate of mouse TCP-1 θ transfected 293T cells and is provided as 100 μ g protein in 200 μ l SDS-PAGE buffer.

STORAGE

Store at -20° C. Repeated freezing and thawing should be minimized. Sample vial should be boiled once prior to use. Non-hazardous. No MSDS required.

RESEARCH USE

For research use only, not for use in diagnostic procedures.

APPLICATIONS

TCP-1 θ (m): 293T Lysate is suitable as a Western Blotting positive control for mouse reactive TCP-1 θ antibodies. Recommended use: 10-20 μ l per lane.

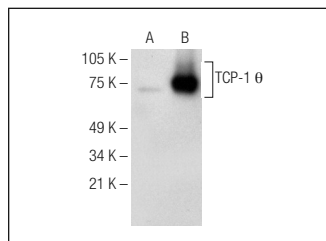
Control 293T Lysate: sc-117752 is available as a Western Blotting negative control lysate derived from non-transfected 293T cells.

TCP-1 θ (E-1): sc-377453 is recommended as a positive control antibody for Western Blot analysis of enhanced mouse TCP-1 θ expression in TCP-1 θ transfected 293T cells (starting dilution 1:100, dilution range 1:100-1:1,000).

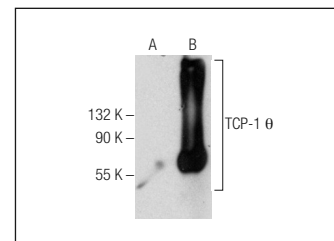
RECOMMENDED SUPPORT REAGENTS

To ensure optimal results, the following support reagents are recommended:
 1) Western Blotting: use m-IgG κ BP-HRP: sc-516102 or m-IgG κ BP-HRP (Cruz Marker): sc-516102-CM (dilution range: 1:1000-1:10000), Cruz Marker™ Molecular Weight Standards: sc-2035, UltraCruz® Blocking Reagent: sc-516214 and Western Blotting Luminol Reagent: sc-2048.

DATA



TCP-1 θ (E-1): sc-377453. Western blot analysis of TCP-1 θ expression in non-transfected: sc-117752 (A) and mouse TCP-1 θ transfected: sc-123954 (B) 293T whole cell lysates.



TCP-1 θ (E-7): sc-377261. Western blot analysis of TCP-1 θ expression in non-transfected: sc-117752 (A) and mouse TCP-1 θ transfected: sc-123954 (B) 293T whole cell lysates.

PROTOCOLS

See our web site at www.scbt.com for detailed protocols and support products.