



SZABO SCANDIC

Part of Europa Biosite

Produktinformation



Forschungsprodukte & Biochemikalien



Zellkultur & Verbrauchsmaterial



Diagnostik & molekulare Diagnostik



Laborgeräte & Service

Weitere Information auf den folgenden Seiten!
See the following pages for more information!



Lieferung & Zahlungsart

siehe unsere [Liefer- und Versandbedingungen](#)

Zuschläge

- Mindermengenzuschlag
- Trockeneiszuschlag
- Gefahrgutzuschlag
- Expressversand

SZABO-SCANDIC HandelsgmbH

Quellenstraße 110, A-1100 Wien

T. +43(0)1 489 3961-0

F. +43(0)1 489 3961-7

mail@szabo-scandic.com

www.szabo-scandic.com

[linkedin.com/company/szaboscandic](https://www.linkedin.com/company/szaboscandic) 

TORC2 (m3): 293T Lysate: sc-124219

BACKGROUND

The TORC (transducer of regulated cAMP response element-binding) proteins, TORC1 and TORC2, are potent CREB coactivators that are exported from the nucleus in a CRM1-dependent manner. The translocation of TORC proteins is a conserved step in the activation of CRE-mediated gene expression induced by cAMP. TORC1 and TORC2 operate via phosphorylation-dependent interactions.

REFERENCES

1. Konkright, M.D., et al. 2003. TORCs: transducers of regulated CREB activity. *Mol. Cell* 12: 413-423.
2. Iourgenko, V., et al. 2003. Identification of a family of cAMP response element-binding protein coactivators by genome-scale functional analysis in mammalian cells. *Proc. Natl. Acad. Sci. USA* 100: 12147-12152.
3. Bittinger, M.A., et al. 2004. Activation of cAMP response element-mediated gene expression by regulated nuclear transport of TORC proteins. *Curr. Biol.* 14: 2156-2161.
4. Sreaton, R.A., et al. 2004. The CREB coactivator TORC2 functions as a calcium- and cAMP-sensitive coincidence detector. *Cell* 119: 61-74.
5. Jacinto, E., et al. 2004. Mammalian TOR complex 2 controls the Actin cytoskeleton and is Rapamycin insensitive. *Nat. Cell Biol.* 6: 1122-1128.
6. Reinke, A., et al. 2004. TOR complex 1 includes a novel component, Tco89p (YPL180w), and cooperates with Ssd1p to maintain cellular integrity in *Saccharomyces cerevisiae*. *J. Biol. Chem.* 279: 14752-14762.
7. Behboudi, A., et al. 2005. Clear cell hidradenoma of the skin—a third tumor type with a t(11;19)-associated TORC1-MAML2 gene fusion. *Genes Chromosomes Cancer* 43: 202-205.

CHROMOSOMAL LOCATION

Genetic locus: *Crtc2* (mouse) mapping to 3 F1.

PRODUCT

TORC2 (m3): 293T Lysate represents a lysate of mouse TORC2 transfected 293T cells and is provided as 100 µg protein in 200 µl SDS-PAGE buffer.

STORAGE

Store at -20° C. Repeated freezing and thawing should be minimized. Sample vial should be boiled once prior to use. Non-hazardous. No MSDS required.

APPLICATIONS

TORC2 (m3): 293T Lysate is suitable as a Western Blotting positive control for mouse reactive TORC2 antibodies. Recommended use: 10-20 µl per lane.

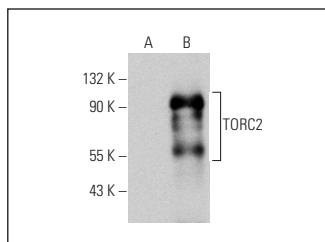
Control 293T Lysate: sc-117752 is available as a Western Blotting negative control lysate derived from non-transfected 293T cells.

TORC2 (E-10): sc-515488 is recommended as a positive control antibody for Western Blot analysis of enhanced mouse TORC2 expression in TORC2 transfected 293T cells (starting dilution 1:100, dilution range 1:100-1:1,000).

RECOMMENDED SUPPORT REAGENTS

To ensure optimal results, the following support reagents are recommended:
1) Western Blotting: use m-IgGκ BP-HRP: sc-516102 or m-IgGκ BP-HRP (Cruz Marker): sc-516102-CM (dilution range: 1:1000-1:10000), Cruz Marker™ Molecular Weight Standards: sc-2035, UltraCruz® Blocking Reagent: sc-516214 and Western Blotting Luminol Reagent: sc-2048.

DATA



TORC2 (E-10): sc-515488. Western blot analysis of TORC2 expression in non-transfected: sc-117752 (A) and mouse TORC2 transfected: sc-124219 (B) 293T whole cell lysates.

RESEARCH USE

For research use only, not for use in diagnostic procedures.

PROTOCOLS

See our web site at www.scbt.com for detailed protocols and support products.