



# SZABO SCANDIC

Part of Europa Biosite

## Produktinformation



Forschungsprodukte & Biochemikalien



Zellkultur & Verbrauchsmaterial



Diagnostik & molekulare Diagnostik



Laborgeräte & Service

Weitere Information auf den folgenden Seiten!  
See the following pages for more information!



### Lieferung & Zahlungsart

siehe unsere [Liefer- und Versandbedingungen](#)

### Zuschläge

- Mindermengenzuschlag
- Trockeneiszuschlag
- Gefahrgutzuschlag
- Expressversand

### SZABO-SCANDIC HandelsgmbH

Quellenstraße 110, A-1100 Wien

T. +43(0)1 489 3961-0

F. +43(0)1 489 3961-7

[mail@szabo-scandic.com](mailto:mail@szabo-scandic.com)

[www.szabo-scandic.com](http://www.szabo-scandic.com)

[linkedin.com/company/szaboscandic](https://www.linkedin.com/company/szaboscandic) 

# Trehalase (m): 293T Lysate: sc-124274

## BACKGROUND

Trehalase, also known as TREH, TREA or  $\alpha,\alpha$ -trehalose glucohydrolase, is a 583 amino acid protein belonging to the glycosyl hydrolase 37 family. Localizing to cell membrane and lipid-anchor, Trehalase is expressed in kidney, liver, and small intestine. Trehalase hydrolyses ingested trehalose, a disaccharide formed by two glucose molecules found mainly in insects, fungi, and plants, into cellular substrate glucose. Isolated trehalose intolerance due to deficiencies of Trehalase can result in gastrointestinal symptoms. Trehalase may also be a marker for renal tubular damage, and may contain an N-terminal signal peptide, five potential N-glycosylation sites, and a C-terminal hydrophobic region for glycosylphosphatidylinositol (GPI) attachment. Existing as two alternatively spliced isoforms, the gene encoding Trehalase maps to human chromosome 11q23.3.

## REFERENCES

- Ruf, J., Wacker, H., James, P., Maffia, M., Seiler, P., Galand, G., von Kieckebusch, A., Semenza, G. and Matei, N. 1990. Rabbit small intestinal trehalase. Purification, cDNA cloning, expression, and verification of glycosylphosphatidylinositol anchoring. *J. Biol. Chem.* 265: 15034-15039.
- Sasai-Takedatsu, M., Taketani, S., Nagata, N., Furukawa, T., Tokunaga, R., Kojima, T. and Kobayashi, Y. 1996. Human trehalase: characterization, localization, and its increase in urine by renal proximal tubular damage. *Nephron* 73: 179-185.
- Ishihara, R., Taketani, S., Sasai-Takedatsu, M., Kino, M., Tokunaga, R. and Kobayashi, Y. 1997. Molecular cloning, sequencing and expression of cDNA encoding human trehalase. *Gene* 202: 69-74.
- Oesterreicher, T.J., Markesich, D.C. and Henning, S.J. 2001. Cloning, characterization and mapping of the mouse trehalase (Treh) gene. *Gene* 270: 211-220.
- Forcella, M., Cardona, F., Goti, A., Parmeggiani, C., Cipolla, L., Gregori, M., Schirone, R., Fusi, P. and Parenti, P. 2010. A membrane-bound trehalase from *Chironomus riparius* larvae: purification and sensitivity to inhibition. *Glycobiology* 20: 1186-1195.
- Wegener, G., Macho, C., Schlöder, P., Kamp, G. and Ando, O. 2010. Long-term effects of the trehalase inhibitor trehazolin on trehalase activity in locust flight muscle. *J. Exp. Biol.* 213: 3852-3857.
- Liebl, M., Nelius, V., Kamp, G., Ando, O. and Wegener, G. 2010. Fate and effects of the trehalase inhibitor trehazolin in the migratory locust (*Locusta migratoria*). *J. Insect Physiol.* 56: 567-574.
- Chen, J., Tang, B., Chen, H., Yao, Q., Huang, X., Chen, J., Zhang, D. and Zhang, W. 2010. Different functions of the insect soluble and membrane-bound trehalase genes in chitin biosynthesis revealed by RNA interference. *PLoS ONE* 5: e10133.
- Leng, Y., Peng, G., Cao, Y. and Xia, Y. 2011. Genetically altering the expression of neutral trehalase gene affects conidiospore thermotolerance of the entomopathogenic fungus *Metarhizium acridum*. *BMC Microbiol.* 11: 32.

## CHROMOSOMAL LOCATION

Genetic locus: Treh (mouse) mapping to 9 A5.2.

## PRODUCT

Trehalase (m): 293T Lysate represents a lysate of mouse Trehalase transfected 293T cells and is provided as 100  $\mu$ g protein in 200  $\mu$ l SDS-PAGE buffer.

## APPLICATIONS

Trehalase (m): 293T Lysate is suitable as a Western Blotting positive control for mouse reactive Trehalase antibodies. Recommended use: 10-20  $\mu$ l per lane.

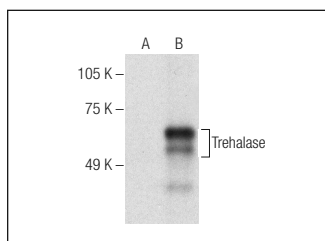
Control 293T Lysate: sc-117752 is available as a Western Blotting negative control lysate derived from non-transfected 293T cells.

Trehalase (D-2): sc-390034 is recommended as a positive control antibody for Western Blot analysis of enhanced mouse Trehalase expression in Trehalase transfected 293T cells (starting dilution 1:100, dilution range 1:100-1:1,000).

## RECOMMENDED SUPPORT REAGENTS

To ensure optimal results, the following support reagents are recommended: 1) Western Blotting: use m-IgG $\kappa$  BP-HRP: sc-516102 or m-IgG $\kappa$  BP-HRP (Cruz Marker): sc-516102-CM (dilution range: 1:1000-1:10000), Cruz Marker™ Molecular Weight Standards: sc-2035, UltraCruz® Blocking Reagent: sc-516214 and Western Blotting Luminol Reagent: sc-2048.

## DATA



Trehalase (D-2): sc-390034. Western blot analysis of Trehalase expression in non-transfected: sc-117752 (A) and mouse Trehalase transfected: sc-124274 (B) 293T whole cell lysates.

## STORAGE

Store at -20° C. Repeated freezing and thawing should be minimized. Sample vial should be boiled once prior to use. Non-hazardous. No MSDS required.

## RESEARCH USE

For research use only, not for use in diagnostic procedures.

## PROTOCOLS

See our web site at [www.scbt.com](http://www.scbt.com) for detailed protocols and support products.