



SZABO SCANDIC

Part of Europa Biosite

Produktinformation



Forschungsprodukte & Biochemikalien



Zellkultur & Verbrauchsmaterial



Diagnostik & molekulare Diagnostik



Laborgeräte & Service

Weitere Information auf den folgenden Seiten!
See the following pages for more information!



Lieferung & Zahlungsart

siehe unsere [Liefer- und Versandbedingungen](#)

Zuschläge

- Mindermengenzuschlag
- Trockeneiszuschlag
- Gefahrgutzuschlag
- Expressversand

SZABO-SCANDIC HandelsgmbH

Quellenstraße 110, A-1100 Wien

T. +43(0)1 489 3961-0

F. +43(0)1 489 3961-7

mail@szabo-scandic.com

www.szabo-scandic.com

[linkedin.com/company/szaboscandic](https://www.linkedin.com/company/szaboscandic) 

TREX-1 (m): 293T Lysate: sc-124276

BACKGROUND

TREX-1 (three prime repair exonuclease-1), also known as trophoblast expressed 1, CRV, AGS1, AGS5, DRN3, HERNS or DNase III, is a member of the exonuclease superfamily and belongs to the TREX family. Members of the TREX family are involved in DNA metabolism and repair. TREX-1 is expressed in spleen, liver, thymus, colon, heart, brain and small intestine. It localizes to the nucleus and exists as a homodimer. TREX-1 is an exonuclease and its activity requires magnesium as a cofactor. TREX-1 has a preference for double stranded DNA and functions in the 3'-5' direction yielding nucleoside 5'-phosphates. TREX-1 also interacts with the SET complex (an endoplasmic reticulum (ER)-associated complex) and participates in granzyme A-mediated apoptosis. Mutations or defects in the gene encoding TREX-1 have been associated with a variety of diseases, including systemic lupus erythematosus, chilblain lupus (CHBL), Aicardi-Goutieres syndrome type 1 (AGS1) and type 5 (AGS5) and autosomal dominant retinal vasculopathy with cerebral leukodystrophy (CRV).

REFERENCES

- Masuda, S., et al. 2005. Recruitment of the human TREX complex to mRNA during splicing. *Genes Dev.* 19: 1512-1517.
- Crow, Y.J., et al. 2006. Mutations in the gene encoding the 3'-5' DNA exonuclease TREX-1 cause Aicardi-Goutieres syndrome at the AGS1 locus. *Nat. Genet.* 38: 917-920.
- Chowdhury, D., et al. 2006. The exonuclease TREX-1 is in the SET complex and acts in concert with nm23-H1 to degrade DNA during granzyme A-mediated cell death. *Mol. Cell* 23: 133-142.
- Wang, J.Y. and Edelman, W. 2006. Mismatch repair proteins as sensors of alkylation DNA damage. *Cancer Cell* 9: 417-418.
- Namiki, Y. and Zou, L. 2006. ATRIP associates with replication protein A-coated ssDNA through multiple interactions. *Proc. Natl. Acad. Sci. USA* 103: 580-585.
- Coscoy, L. and Raulet, D.H. 2007. DNA mismanagement leads to immune system oversight. *Cell* 131: 836-838.
- Yang, Y.G., et al. 2007. TREX-1 exonuclease degrades ssDNA to prevent chronic checkpoint activation and autoimmune disease. *Cell* 131: 873-886.
- Lee-Kirsch, M.A., et al. 2007. Mutations in the gene encoding the 3'-5' DNA exonuclease TREX-1 are associated with systemic lupus erythematosus. *Nat. Genet.* 39: 1065-1067.
- Hur, J.W., et al. 2008. TREX-1 polymorphisms associated with autoantibodies in patients with systemic lupus erythematosus. *Rheumatol. Int.* 28: 783-789.

CHROMOSOMAL LOCATION

Genetic locus: *Trex1* (mouse) mapping to 9 F2.

PRODUCT

TREX-1 (m): 293T Lysate represents a lysate of mouse TREX-1 transfected 293T cells and is provided as 100 µg protein in 200 µl SDS-PAGE buffer.

APPLICATIONS

TREX-1 (m): 293T Lysate is suitable as a Western Blotting positive control for mouse reactive TREX-1 antibodies. Recommended use: 10-20 µl per lane.

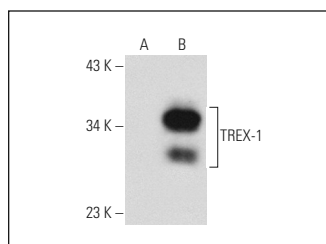
Control 293T Lysate: sc-117752 is available as a Western Blotting negative control lysate derived from non-transfected 293T cells.

TREX-1 (C-11): sc-133112 is recommended as a positive control antibody for Western Blot analysis of enhanced mouse TREX-1 expression in TREX-1 transfected 293T cells (starting dilution 1:100, dilution range 1:100-1:1,000).

RECOMMENDED SUPPORT REAGENTS

To ensure optimal results, the following support reagents are recommended:
 1) Western Blotting: use m-IgGκ BP-HRP: sc-516102 or m-IgGκ BP-HRP (Cruz Marker): sc-516102-CM (dilution range: 1:1000-1:10000), Cruz Marker™ Molecular Weight Standards: sc-2035, UltraCruz® Blocking Reagent: sc-516214 and Western Blotting Luminol Reagent: sc-2048.

DATA



TREX-1 (C-11): sc-133112. Western blot analysis of TREX-1 expression in non-transfected: sc-117752 (A) and mouse TREX-1 transfected: sc-124276 (B) 293T whole cell lysates.

STORAGE

Store at -20° C. Repeated freezing and thawing should be minimized. Sample vial should be boiled once prior to use. Non-hazardous. No MSDS required.

RESEARCH USE

For research use only, not for use in diagnostic procedures.

PROTOCOLS

See our web site at www.scbt.com for detailed protocols and support products.