



# SZABO SCANDIC

Part of Europa Biosite

## Produktinformation



Forschungsprodukte & Biochemikalien



Zellkultur & Verbrauchsmaterial



Diagnostik & molekulare Diagnostik



Laborgeräte & Service

Weitere Information auf den folgenden Seiten!  
See the following pages for more information!



### Lieferung & Zahlungsart

siehe unsere [Liefer- und Versandbedingungen](#)

### Zuschläge

- Mindermengenzuschlag
- Trockeneiszuschlag
- Gefahrgutzuschlag
- Expressversand

### SZABO-SCANDIC HandelsgmbH

Quellenstraße 110, A-1100 Wien

T. +43(0)1 489 3961-0

F. +43(0)1 489 3961-7

[mail@szabo-scandic.com](mailto:mail@szabo-scandic.com)

[www.szabo-scandic.com](http://www.szabo-scandic.com)

[linkedin.com/company/szaboscandic](https://www.linkedin.com/company/szaboscandic) 

# V-ATPase B1 (m2): 293T Lysate: sc-124513

## BACKGROUND

Vacuolar-type H<sup>+</sup>-ATPase (V-ATPase) is a multi-subunit enzyme responsible for acidification of eukaryotic intracellular organelles. V-ATPases pump protons against an electrochemical gradient, while F-ATPases reverse the process, thereby synthesizing ATP. A peripheral V<sub>1</sub> domain, which is responsible for ATP hydrolysis, and an integral V<sub>0</sub> domain, which is responsible for proton translocation, compose V-ATPase. Nine subunits (A-H) make up the V<sub>1</sub> domain and five subunits (a, d, c, c' and c'') make up the V<sub>0</sub> domain. Like F-ATPase, V-ATPase most likely operates through a rotary mechanism. The V-ATPase V<sub>1</sub> B subunit exists as two isoforms. In the inner ear, the V-ATPase B1 isoform functions in proton secretion and is required to maintain proper endolymph pH and normal auditory function. The gene encoding the human V-ATPase B1 isoform maps to chromosome 2q13.1. Mutations in this gene cause distal renal tubular acidosis associated with sensorineural deafness. The V-ATPase B2 isoform is expressed in kidney and is the only B isoform expressed in osteoclasts. The gene encoding the human V-ATPase B2 isoform maps to chromosome 8p21.3.

## REFERENCES

- Bernasconi, P., et al. 1990. An mRNA from human brain encodes an isoform of the B subunit of the vacuolar H<sup>+</sup>-ATPase. *J. Biol. Chem.* 265: 17428-17431.
- Ozcelik, T., et al. 1991. Chromosomal assignments of genes for vacuolar (endomembrane) proton pump subunits VPP1/Vpp-1 (116 kDa) and VPP3/Vpp-3 (58 kDa) in human and mouse. *Cytogenet. Cell Genet.* 58: 2008-2009.
- Nelson, R.D., et al. 1992. Selectively amplified expression of an isoform of the vacuolar H<sup>+</sup>-ATPase 56-kilodalton subunit in renal intercalated cells. *Proc. Natl. Acad. Sci. USA* 89: 3541-3545.
- Lee, B.S., et al. 1996. Osteoclasts express the B2 isoform of vacuolar H<sup>+</sup>-ATPase intracellularly and on their plasma membranes. *Am. J. Physiol.* 270: 382-388.
- Karet, F.E., et al. 1999. Mutations in the gene encoding B1 subunit of H<sup>+</sup>-ATPase cause renal tubular acidosis with sensorineural deafness. *Nat. Genet.* 21: 84-90.
- Nishi, T., et al. 2002. The vacuolar H<sup>+</sup>-ATPases—nature's most versatile proton pumps. *Nat. Rev. Mol. Cell. Biol.* 3: 94-103.

## CHROMOSOMAL LOCATION

Genetic locus: Atp6v1b1 (mouse) mapping to 6 C3.

## PRODUCT

V-ATPase B1 (m2): 293T Lysate represents a lysate of mouse V-ATPase B1 transfected 293T cells and is provided as 100 µg protein in 200 µl SDS-PAGE buffer.

## STORAGE

Store at -20° C. Repeated freezing and thawing should be minimized. Sample vial should be boiled once prior to use. Non-hazardous. No MSDS required.

## RESEARCH USE

For research use only, not for use in diagnostic procedures.

## APPLICATIONS

V-ATPase B1 (m2): 293T Lysate is suitable as a Western Blotting positive control for mouse reactive V-ATPase B1 antibodies. Recommended use: 10-20 µl per lane.

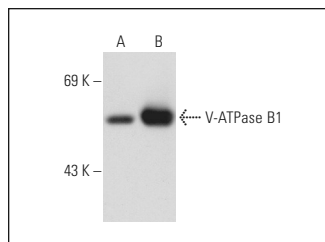
Control 293T Lysate: sc-117752 is available as a Western Blotting negative control lysate derived from non-transfected 293T cells.

V-ATPase B1/2 (F-6): sc-55544 is recommended as a positive control antibody for Western Blot analysis of enhanced mouse V-ATPase B1 expression in V-ATPase B1 transfected 293T cells (starting dilution 1:100, dilution range 1:100-1:1,000).

## RECOMMENDED SUPPORT REAGENTS

To ensure optimal results, the following support reagents are recommended: 1) Western Blotting: use m-IgGκ BP-HRP: sc-516102 or m-IgGκ BP-HRP (Cruz Marker): sc-516102-CM (dilution range: 1:1000-1:10000), Cruz Marker™ Molecular Weight Standards: sc-2035, UltraCruz® Blocking Reagent: sc-516214 and Western Blotting Luminol Reagent: sc-2048.

## DATA



V-ATPase B1/2 (F-6): sc-55544. Western blot analysis of V-ATPase B1 expression in non-transfected: sc-117752 (A) and mouse V-ATPase B1 transfected: sc-124513 (B) 293T whole cell lysates.

## PROTOCOLS

See our web site at [www.scbt.com](http://www.scbt.com) for detailed protocols and support products.