



# SZABO SCANDIC

Part of Europa Biosite

## Produktinformation



Forschungsprodukte & Biochemikalien



Zellkultur & Verbrauchsmaterial



Diagnostik & molekulare Diagnostik



Laborgeräte & Service

Weitere Information auf den folgenden Seiten!  
See the following pages for more information!



### Lieferung & Zahlungsart

siehe unsere [Liefer- und Versandbedingungen](#)

### Zuschläge

- Mindermengenzuschlag
- Trockeneiszuschlag
- Gefahrgutzuschlag
- Expressversand

### SZABO-SCANDIC HandelsgmbH

Quellenstraße 110, A-1100 Wien

T. +43(0)1 489 3961-0

F. +43(0)1 489 3961-7

[mail@szabo-scandic.com](mailto:mail@szabo-scandic.com)

[www.szabo-scandic.com](http://www.szabo-scandic.com)

[linkedin.com/company/szaboscandic](https://www.linkedin.com/company/szaboscandic) 

# Aldolase B (m13): 293T Lysate: sc-124950

## BACKGROUND

Fructose 1,6-bisphosphate aldolase catalyses the reversible condensation of glyceraldehyde 3-phosphate into fructose 1,6-bisphosphate. Fructose 1,6-bisphosphate aldolase exists as three forms, the muscle-specific Aldolase A, the liver-specific Aldolase B and the brain-specific Aldolase C. Aldolase A, B and C arose from a common ancestral gene, from which Aldolase B first diverged. Aldolase A is one of the most highly conserved enzymes known, with only about 2% of the residues changing per 100 million years. Aldolase B is regulated by the hormones Insulin and Glucagon and has been implicated in hereditary fructose intolerance disease. Aldolase C is a polypeptide that is exclusively expressed in Purkinje cells. Aldolase C-positive Purkinje cells are organized in the cerebellum as stripes or bands that run from anterior to posterior across the cerebellum and alternate with bands of Aldolase C-negative Purkinje cells.

## REFERENCES

- Izzo, P., et al. 1988. Human aldolase A gene. Structural organization and tissue-specific expression by multiple promoters and alternate mRNA processing. *Eur. J. Biochem.* 174: 569-578.
- Freemont, P.S., et al. 1988. The complete amino acid sequence of human skeletal-muscle fructose-bisphosphate aldolase. *Biochem. J.* 249: 779-788.
- Caffe, A.R., et al. 1994. Distribution of Purkinje cell-specific Zebirin-II/aldolase C immunoreactivity in the mouse, rat, rabbit, and human retina. *J. Comp. Neurol.* 348: 291-297.
- Hawkes, R. and Herrup, K. 1995. Aldolase C/Zebirin II and the regionalization of the cerebellum. *J. Mol. Neurosci.* 6: 147-158.
- Lannoo, M.J. and Hawkes, R. 1997. A search for primitive Purkinje cells: zebirin II expression in sea lampreys (*Petromyzon marinus*). *Neurosci. Lett.* 237: 53-55.
- Walther, E.U., et al. 1998. Genomic sequences of aldolase C (Zebirin II) direct lacZ expression exclusively in non-neuronal cells of transgenic mice. *Proc. Natl. Acad. Sci. USA* 95: 2615-2620.
- Dehnes, Y., et al. 1998. The glutamate transporter EAAT4 in rat cerebellar Purkinje cells: a glutamate-gated chloride channel concentrated near the synapse in parts of the dendritic membrane facing astroglia. *J. Neurosci.* 18: 3606-3619.
- Eisenman, L.M., et al. 1998. Regionalization defects in the weaver mouse cerebellum. *J. Comp. Neurol.* 394: 431-444.

## CHROMOSOMAL LOCATION

Genetic locus: Aldob (mouse) mapping to 4 B1.

## PRODUCT

Aldolase B (m13): 293T Lysate represents a lysate of mouse Aldolase B transfected 293T cells and is provided as 100 µg protein in 200 µl SDS-PAGE buffer.

## RESEARCH USE

For research use only, not for use in diagnostic procedures.

## APPLICATIONS

Aldolase B (m13): 293T Lysate is suitable as a Western Blotting positive control for mouse reactive Aldolase B antibodies. Recommended use: 10-20 µl per lane.

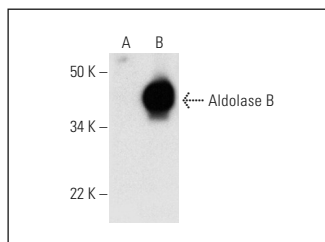
Control 293T Lysate: sc-117752 is available as a Western Blotting negative control lysate derived from non-transfected 293T cells.

Aldolase B (C-11): sc-393278 is recommended as a positive control antibody for Western Blot analysis of enhanced mouse Aldolase B expression in Aldolase B transfected 293T cells (starting dilution 1:100, dilution range 1:100-1:1,000).

## RECOMMENDED SUPPORT REAGENTS

To ensure optimal results, the following support reagents are recommended: 1) Western Blotting: use m-IgGκ BP-HRP: sc-516102 or m-IgGκ BP-HRP (Cruz Marker): sc-516102-CM (dilution range: 1:1000-1:10000), Cruz Marker™ Molecular Weight Standards: sc-2035, UltraCruz® Blocking Reagent: sc-516214 and Western Blotting Luminol Reagent: sc-2048.

## DATA



Aldolase B (C-11): sc-393278. Western blot analysis of Aldolase B expression in non-transfected: sc-117752 (A) and mouse Aldolase B transfected: sc-124950 (B) 293T whole cell lysates.

## STORAGE

Store at -20° C. Repeated freezing and thawing should be minimized. Sample vial should be boiled once prior to use. Non-hazardous. No MSDS required.

## PROTOCOLS

See our web site at [www.scbt.com](http://www.scbt.com) for detailed protocols and support products.