



# SZABO SCANDIC

Part of Europa Biosite

## Produktinformation



Forschungsprodukte & Biochemikalien



Zellkultur & Verbrauchsmaterial



Diagnostik & molekulare Diagnostik



Laborgeräte & Service

Weitere Information auf den folgenden Seiten!  
See the following pages for more information!



### Lieferung & Zahlungsart

siehe unsere [Liefer- und Versandbedingungen](#)

### Zuschläge

- Mindermengenzuschlag
- Trockeneiszuschlag
- Gefahrgutzuschlag
- Expressversand

### SZABO-SCANDIC HandelsgmbH

Quellenstraße 110, A-1100 Wien

T. +43(0)1 489 3961-0

F. +43(0)1 489 3961-7

[mail@szabo-scandic.com](mailto:mail@szabo-scandic.com)

[www.szabo-scandic.com](http://www.szabo-scandic.com)

[linkedin.com/company/szaboscandic](https://www.linkedin.com/company/szaboscandic) 

# CNPase (m): 293T Lysate: sc-125149

## BACKGROUND

2',3'-cyclic nucleotide-3'-phosphodiesterase (CNPase) is a membrane-bound enzyme that can link tubulin to membranes and may regulate cytoplasmic microtubule distribution. CNPase acts as a microtubule-associated protein by promoting microtubule assembly; this activity resides in the C-terminus of the enzyme. CNPase is firmly associated with tubulin from brain tissue and thyroid cells and can be found at high concentrations in central nervous system myelin and in the outer segments of photoreceptors in the retina. Acute lead intoxication leads to disturbances in CNPase activity and the morphology of myelin.

## REFERENCES

1. Sprinkle, T.J., et al. 1987. Monoclonal antibody production to human and bovine 2',3'-cyclic nucleotide-3'-phosphodiesterase (CNPase): high-specificity recognition in whole brain acetone powders and conservation of sequence between CNP1 and CNP2. *Brain Res.* 426: 349-357.
2. Vogel, U., et al. 1988. Molecular structure, localization and possible functions of the myelin-associated enzyme 2',3'-cyclic nucleotide-3'-phosphodiesterase. *J. Neurochem.* 50: 1667-1677.
3. Dabrowska-Bouta, B., et al. 2000. Acute lead intoxication *in vivo* affects myelin membrane morphology and CNPase activity. *Exp. Toxicol. Pathol.* 52: 257-263.
4. Bifulco, M., et al. 2002. 2',3'-cyclic nucleotide-3'-phosphodiesterase: a membrane-bound, microtubule-associated protein and membrane anchor for Tubulin. *Proc. Natl. Acad. Sci. USA* 99: 1807-1812.
5. Online Mendelian Inheritance in Man, OMIM™. 2002. Johns Hopkins University, Baltimore, MD. MIM Number: 123830. World Wide Web URL: <http://www.ncbi.nlm.nih.gov/omim/>

## CHROMOSOMAL LOCATION

Genetic locus: *Cnp* (mouse) mappign to 11 D.

## PRODUCT

CNPase (m): 293T Lysate represents a lysate of mouse CNPase transfected 293T cells and is provided as 100 µg protein in 200 µl SDS-PAGE buffer.

## STORAGE

Store at -20° C. Repeated freezing and thawing should be minimized. Sample vial should be boiled once prior to use. Non-hazardous. No MSDS required.

## APPLICATIONS

CNPase (m): 293T Lysate is suitable as a Western Blotting positive control for mouse reactive CNPase antibodies. Recommended use: 10-20 µl per lane.

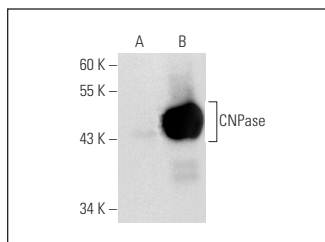
Control 293T Lysate: sc-117752 is available as a Western Blotting negative control lysate derived from non-transfected 293T cells.

CNPase (G-6): sc-166063 is recommended as a positive control antibody for Western Blot analysis of enhanced mouse CNPase expression in CNPase transfected 293T cells (starting dilution 1:100, dilution range 1:100-1:1,000).

## RECOMMENDED SUPPORT REAGENTS

To ensure optimal results, the following support reagents are recommended:  
1) Western Blotting: use m-IgGκ BP-HRP: sc-516102 or m-IgGκ BP-HRP (Cruz Marker): sc-516102-CM (dilution range: 1:1000-1:10000), Cruz Marker™ Molecular Weight Standards: sc-2035, UltraCruz® Blocking Reagent: sc-516214 and Western Blotting Luminol Reagent: sc-2048.

## DATA



CNPase (G-6): sc-166063. Western blot analysis of CNPase expression in non-transfected: sc-117752 (A) and mouse CNPase transfected: sc-125149 (B) 293T whole cell lysates.

## RESEARCH USE

For research use only, not for use in diagnostic procedures.

## PROTOCOLS

See our web site at [www.scbt.com](http://www.scbt.com) for detailed protocols and support products.