



SZABO SCANDIC

Part of Europa Biosite

Produktinformation



Forschungsprodukte & Biochemikalien



Zellkultur & Verbrauchsmaterial



Diagnostik & molekulare Diagnostik



Laborgeräte & Service

Weitere Information auf den folgenden Seiten!
See the following pages for more information!



Lieferung & Zahlungsart

siehe unsere [Liefer- und Versandbedingungen](#)

Zuschläge

- Mindermengenzuschlag
- Trockeneiszuschlag
- Gefahrgutzuschlag
- Expressversand

SZABO-SCANDIC HandelsgmbH

Quellenstraße 110, A-1100 Wien

T. +43(0)1 489 3961-0

F. +43(0)1 489 3961-7

mail@szabo-scandic.com

www.szabo-scandic.com

[linkedin.com/company/szaboscandic](https://www.linkedin.com/company/szaboscandic) 

INSL5 (m): 293T Lysate: sc-125496

BACKGROUND

INSL5 (Insulin-like peptide INSL5, relaxin/Insulin-like protein) is a 135 amino acid protein encoded by the human gene INSL5. The Insulin gene superfamily hormones modulate metabolism, cell growth and tissue-specific functions. Members of this superfamily are characterized by a signal peptide, a B chain, a connecting C chain and an A chain. INSL proteins are mostly secreted proteins that are expressed mainly in testes, placenta, uterus or prenatal tissues. INSL5 shares 40% and 59% sequence homology with human RLN1 and mouse Insl5, respectively, and contains a dibasic cleavage site between the B and C chains. INSL5 exists as a heterodimer of a B chain and an A chain which are linked by two disulfide bonds. INSL5 is thought to play a role in gut contractility or in thymic development and regulation, as it demonstrates predominant expression in the rectum and intermediate expression in the uterus and ascending and descending colon.

REFERENCES

- Conklin, D., et al. 1999. Identification of INSL5, a new member of the Insulin superfamily. *Genomics* 60: 50-56.
- Online Mendelian Inheritance in Man, OMIM™. 2002. Johns Hopkins University, Baltimore, MD. MIM Number: 606413. World Wide Web URL: <http://www.ncbi.nlm.nih.gov/omim/>
- Liu, C., et al. 2005. Recent progress in Relaxin 3-related research. *Ann. N.Y. Acad. Sci.* 1041: 47-60.
- Hsu, S.Y., et al. 2005. Evolution of the signaling system in relaxin-family peptides. *Ann. N.Y. Acad. Sci.* 1041: 520-529.
- Wilkinson, T.N., et al. 2005. Evolution of the relaxin-like peptide family: from neuropeptide to reproduction. *Ann. N.Y. Acad. Sci.* 1041: 530-533.
- Liu, C., et al. 2005. INSL5 is a high affinity specific agonist for GPCR142 (GPR100). *J. Biol. Chem.* 280: 292-300.
- Wilkinson, T.N., et al. 2005. Evolution of the relaxin-like peptide family. *BMC Evol. Biol.* 5: 14.

CHROMOSOMAL LOCATION

Genetic locus: Insl5 (mouse) mapping to 4 C6.

PRODUCT

INSL5 (m): 293T Lysate represents a lysate of mouse INSL5 transfected 293T cells and is provided as 100 µg protein in 200 µl SDS-PAGE buffer.

APPLICATIONS

INSL5 (m): 293T Lysate is suitable as a Western Blotting positive control for mouse reactive INSL5 antibodies. Recommended use: 10-20 µl per lane.

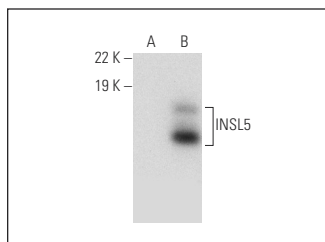
Control 293T Lysate: sc-117752 is available as a Western Blotting negative control lysate derived from non-transfected 293T cells.

INSL5 (G-12): sc-398048 is recommended as a positive control antibody for Western Blot analysis of enhanced mouse INSL5 expression in INSL5 transfected 293T cells (starting dilution 1:100, dilution range 1:100-1:1,000).

RECOMMENDED SUPPORT REAGENTS

To ensure optimal results, the following support reagents are recommended:
 1) Western Blotting: use m-IgGκ BP-HRP: sc-516102 or m-IgGκ BP-HRP (Cruz Marker): sc-516102-CM (dilution range: 1:1000-1:10000), Cruz Marker™ Molecular Weight Standards: sc-2035, UltraCruz® Blocking Reagent: sc-516214 and Western Blotting Luminol Reagent: sc-2048.

DATA



INSL5 (G-12): sc-398048. Western blot analysis of INSL5 expression in non-transfected: sc-117752 (A) and mouse INSL5 transfected: sc-125496 (B) 293T whole cell lysates.

STORAGE

Store at -20° C. Repeated freezing and thawing should be minimized. Sample vial should be boiled once prior to use. Non-hazardous. No MSDS required.

RESEARCH USE

For research use only, not for use in diagnostic procedures.

PROTOCOLS

See our web site at www.scbt.com for detailed protocols and support products.