



SZABO SCANDIC

Part of Europa Biosite

Produktinformation



Forschungsprodukte & Biochemikalien



Zellkultur & Verbrauchsmaterial



Diagnostik & molekulare Diagnostik



Laborgeräte & Service

Weitere Information auf den folgenden Seiten!
See the following pages for more information!



Lieferung & Zahlungsart

siehe unsere [Liefer- und Versandbedingungen](#)

Zuschläge

- Mindermengenzuschlag
- Trockeneiszuschlag
- Gefahrgutzuschlag
- Expressversand

SZABO-SCANDIC HandelsgmbH

Quellenstraße 110, A-1100 Wien

T. +43(0)1 489 3961-0

F. +43(0)1 489 3961-7

mail@szabo-scandic.com

www.szabo-scandic.com

[linkedin.com/company/szaboscandic](https://www.linkedin.com/company/szaboscandic) 

CLEC-10A (m): 293T Lysate: sc-125612

BACKGROUND

CLEC-10A (C-type lectin domain family 10, member A), also known as macrophage galactose and N-acetylgalactosamine-specific lectin (MGL), macrophage asialoglycoprotein-binding protein (M-ASGP-BP) or macrophage galactose/N-acetylgalactosamine-specific lectin, is a protein with galactose-binding activity and with sugar-binding specificity that is the same as that of the native lectin. CLEC-10A serves as a unique macrophage marker in mouse lung tissue due to its topographical site-dependent pattern of expression. Additionally, the most intense signal is observed in the extract from skin, suggesting that cells expressing this lectin are abundant in skin. CLEC-10A may also participate in the binding of the macrophages to tumor cells. Cells which stain positively for CLEC-10A are distributed in the connective tissue and in the interstice, particularly the dermis and subcutaneous layer of skin.

REFERENCES

- Oda, S., et al. 1989. Binding of activated macrophages to tumor cells through a macrophage lectin and its role in macrophage tumoricidal activity. *J. Biochem.* 105: 1040-1043.
- Li, M., et al. 1990. Molecular cloning and sequence analysis of cDNA encoding the macrophage lectin specific for galactose and N-acetylgalactosamine. *J. Biol. Chem.* 265: 11295-11298.
- Sato, M., et al. 1992. Molecular cloning and expression of cDNA encoding a galactose/N-acetylgalactosamine-specific lectin on mouse tumoricidal macrophages. *J. Biochem.* 111: 331-336.
- Kimura, T., et al. 1995. Calcium-dependent conformation of a mouse macrophage calcium-type lectin. Carbohydrate binding activity is stabilized by an antibody specific for a calcium-dependent epitope. *J. Biol. Chem.* 270: 16056-16062.
- Imai, Y., et al. 1995. Restricted expression of galactose/N-acetylgalactosamine-specific macrophage C-type lectin to connective tissue and to metastatic lesions in mouse lung. *Immunology* 86: 591-598.
- Mizuochi, S., et al. 1997. Unique tissue distribution of a mouse macrophage C-type lectin. *Glycobiology* 7: 137-146.

CHROMOSOMAL LOCATION

Genetic locus: *Clec10a* (mouse) mapping to 11 B3.

PRODUCT

CLEC-10A (m): 293T Lysate represents a lysate of mouse CLEC-10A transfected 293T cells and is provided as 100 µg protein in 200 µl SDS-PAGE buffer.

STORAGE

Store at -20° C. Repeated freezing and thawing should be minimized. Sample vial should be boiled once prior to use. Non-hazardous. No MSDS required.

PROTOCOLS

See our web site at www.scbt.com for detailed protocols and support products.

APPLICATIONS

CLEC-10A (m): 293T Lysate is suitable as a Western Blotting positive control for mouse reactive CLEC-10A antibodies. Recommended use: 10-20 µl per lane.

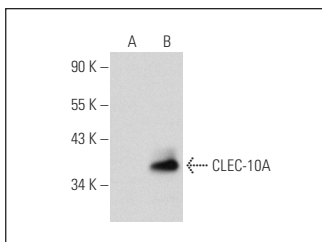
Control 293T Lysate: sc-117752 is available as a Western Blotting negative control lysate derived from non-transfected 293T cells.

CLEC-10A (ER-MP23): sc-56109 is recommended as a positive control antibody for Western Blot analysis of enhanced mouse CLEC-10A expression in CLEC-10A transfected 293T cells (starting dilution 1:100, dilution range 1:100-1:1,000).

RECOMMENDED SUPPORT REAGENTS

To ensure optimal results, the following support reagents are recommended:
1) Western Blotting: use m-IgGκ BP-HRP: sc-516102 or m-IgGκ BP-HRP (Cruz Marker): sc-516102-CM (dilution range: 1:1000-1:10000), Cruz Marker™ Molecular Weight Standards: sc-2035, UltraCruz® Blocking Reagent: sc-516214 and Western Blotting Luminol Reagent: sc-2048.

DATA



CLEC-10A (ER-MP23): sc-56109. Western blot analysis of CLEC-10A expression in non-transfected: sc-117752 (A) and mouse CLEC-10A transfected: sc-125612 (B) 293T whole cell lysates.

RESEARCH USE

For research use only, not for use in diagnostic procedures.