



# SZABO SCANDIC

Part of Europa Biosite

## Produktinformation



Forschungsprodukte & Biochemikalien



Zellkultur & Verbrauchsmaterial



Diagnostik & molekulare Diagnostik



Laborgeräte & Service

Weitere Information auf den folgenden Seiten!  
See the following pages for more information!



### Lieferung & Zahlungsart

siehe unsere [Liefer- und Versandbedingungen](#)

### Zuschläge

- Mindermengenzuschlag
- Trockeneiszuschlag
- Gefahrgutzuschlag
- Expressversand

### SZABO-SCANDIC HandelsgmbH

Quellenstraße 110, A-1100 Wien

T. +43(0)1 489 3961-0

F. +43(0)1 489 3961-7

[mail@szabo-scandic.com](mailto:mail@szabo-scandic.com)

[www.szabo-scandic.com](http://www.szabo-scandic.com)

[linkedin.com/company/szaboscandic](https://www.linkedin.com/company/szaboscandic) 

# MRP-L12 (m2): 293T Lysate: sc-125637

## BACKGROUND

MRP-L12 (mitochondrial ribosomal protein-L12), also referred to as 5c5-2, L12mt, MRPL7 or RPML12, is a mammalian mitochondrial ribosomal protein that is involved in protein synthesis within the mitochondrion. MRP-L12 is enhanced in growth-stimulated cells as a result of transcriptional activation, suggesting that it may function as a translational regulator of mitochondrial mRNAs. Impairment of MRP-L12 leads to reduction in cell growth rate, decreased mitochondrial ATP production and abolition of mitochondrial oxidative phosphorylation. MRP-L12 is cleaved during its translocation across the mitochondrial membrane and it exists as dimers that bind the large ribosomal subunit. MRP-L12 is 198 amino acids in length, belongs to the ribosomal protein L12P family and is highly expressed in the colon.

## REFERENCES

- Marty, L. and Fort, P. 1996. A delayed-early response nuclear gene encoding MRP-L12, the mitochondrial homologue to the bacterial translational regulator L7/L12 protein. *J. Biol. Chem.* 271: 11468-11476.
- Marty, L., Taviaux, S. and Fort, P. 1997. Expression and human chromosomal localization to 17q25 of the growth-regulated gene encoding the mitochondrial ribosomal protein MRPL12. *Genomics* 41: 453-457.
- Johnson, D.F., Hamon, M. and Fischel-Ghodsian, N. 1998. Characterization of the human mitochondrial ribosomal S12 gene. *Genomics* 52: 363-368.
- Online Mendelian Inheritance in Man, OMIM™. 1998. Johns Hopkins University, Baltimore, MD. MIM Number: 602375. World Wide Web URL: <http://www.ncbi.nlm.nih.gov/omim/>
- Frei, C., Galloni, M., Hafen, E. and Edgar, B.A. 2005. The *Drosophila* mitochondrial ribosomal protein MRP-L12 is required for Cyclin D/Cdk4-driven growth. *EMBO J.* 24: 623-634.
- Wang, Z., Cotney, J. and Shadel, G.S. 2007. Human mitochondrial ribosomal protein MRP-L12 interacts directly with mitochondrial RNA polymerase to modulate mitochondrial gene expression. *J. Biol. Chem.* 282: 12610-12618.
- SWISS-PROT/TrEMBL (P52815). World Wide Web URL: <http://www.expasy.ch/sprot/sprot-top.html>

## CHROMOSOMAL LOCATION

Genetic locus: Mrpl12 (mouse) mapping to 11 E2.

## PRODUCT

MRP-L12 (m2): 293T Lysate represents a lysate of mouse MRP-L12 transfected 293T cells and is provided as 100 µg protein in 200 µl SDS-PAGE buffer.

## STORAGE

Store at -20° C. Repeated freezing and thawing should be minimized. Sample vial should be boiled once prior to use. Non-hazardous. No MSDS required.

## PROTOCOLS

See our web site at [www.scbt.com](http://www.scbt.com) for detailed protocols and support products.

## APPLICATIONS

MRP-L12 (m2): 293T Lysate is suitable as a Western Blotting positive control for mouse reactive MRP-L12 antibodies. Recommended use: 10-20 µl per lane.

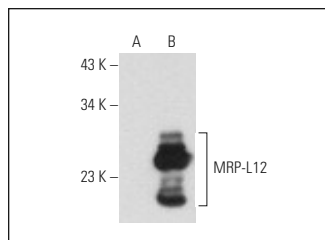
Control 293T Lysate: sc-117752 is available as a Western Blotting negative control lysate derived from non-transfected 293T cells.

MRP-L12 (397.1): sc-100839 is recommended as a positive control antibody for Western Blot analysis of enhanced mouse MRP-L12 expression in MRP-L12 transfected 293T cells (starting dilution 1:100, dilution range 1:100-1:1,000).

## RECOMMENDED SUPPORT REAGENTS

To ensure optimal results, the following support reagents are recommended:  
 1) Western Blotting: use m-IgGκ BP-HRP: sc-516102 or m-IgGκ BP-HRP (Cruz Marker): sc-516102-CM (dilution range: 1:1000-1:10000), Cruz Marker™ Molecular Weight Standards: sc-2035, UltraCruz® Blocking Reagent: sc-516214 and Western Blotting Luminol Reagent: sc-2048.

## DATA



MRP-L12 (397.1): sc-100839. Western blot analysis of MRP-L12 expression in non-transfected: sc-117752 (A) and mouse MRP-L12 transfected: sc-125637 (B) 293T whole cell lysates.

## RESEARCH USE

For research use only, not for use in diagnostic procedures.