



SZABO SCANDIC

Part of Europa Biosite

Produktinformation



Forschungsprodukte & Biochemikalien



Zellkultur & Verbrauchsmaterial



Diagnostik & molekulare Diagnostik



Laborgeräte & Service

Weitere Information auf den folgenden Seiten!
See the following pages for more information!



Lieferung & Zahlungsart

siehe unsere [Liefer- und Versandbedingungen](#)

Zuschläge

- Mindermengenzuschlag
- Trockeneiszuschlag
- Gefahrgutzuschlag
- Expressversand

SZABO-SCANDIC HandelsgmbH

Quellenstraße 110, A-1100 Wien

T. +43(0)1 489 3961-0

F. +43(0)1 489 3961-7

mail@szabo-scandic.com

www.szabo-scandic.com

[linkedin.com/company/szaboscandic](https://www.linkedin.com/company/szaboscandic) 

Neu (m): 293T Lysate: sc-125694

BACKGROUND

The EGF receptor family comprises several related receptor tyrosine kinases that are frequently overexpressed in a variety of carcinomas. Members of this receptor family include EGFR (HER1), Neu (ErbB-2, HER2), ErbB-3 (HER3) and ErbB-4 (HER4), which form either homodimers or heterodimers upon ligand binding. Neu, a glycoprotein, undergoes transactivation upon heterodimerization with other EGF receptor family members. Neu heterodimerization with ErbB-3 recruits heregulin, which induces phosphoinositide (PI) 3-kinase activation. Activation of Neu potentiates tumor cell motility and protease secretion and invasion, and also modulates cell cycle checkpoint function, DNA repair and apoptotic responses. Amplification and/or overexpression of Neu occurs in 20-30% of breast carcinomas. Measurement of increased Neu expression can be a predictor of disease prognosis. Neu may also prove to be a promising target for therapeutic agents.

REFERENCES

- Rubin, I. and Yarden, Y. 2001. The basic biology of HER2. *Ann. Oncol.* 12: S3-S8.
- Eccles, S.A. 2001. The role of c-ErbB-2/HER2/Neu in breast cancer progression and metastasis. *J. Mammary Gland Biol. Neoplasia* 6: 393-406.
- Hellyer, N.J., Kim, M.S. and Koland, J.G. 2001. Heregulin-dependent activation of phosphoinositide 3-kinase and Akt via the ErbB-2/ErbB-3 co-receptor. *J. Biol. Chem.* 276: 42153-42161.
- Ukita, Y., Kato, M. and Terada, T. 2002. Gene amplification and mRNA and protein overexpression of c-ErbB-2 (HER-2/Neu) in human intrahepatic cholangiocarcinoma as detected by fluorescence *in situ* hybridization, *in situ* hybridization, and immunohistochemistry. *J. Hepatol.* 36: 780-785.
- Hayes, D.F. and Thor, A.D. 2002. c-ErbB-2 in breast cancer: development of a clinically useful marker. *Semin. Oncol.* 29: 231-245.
- Baxevasis, C.N., Gritzapis, A.D., Tsitsilonis, O.E., Katsoulas, H.L. and Pampichail, M. 2002. HER-2/Neu-derived peptide epitopes are also recognized by cytotoxic CD3⁺CD56⁺ (natural killer T) lymphocytes. *Int. J. Cancer* 98: 864-872.
- Cho, H.S., Mason, K., Ramyar, K.X., Stanley, A.M., Gabelli, S.B., Denney, D.W., Jr. and Leahy, D.J. 2003. Structure of the extracellular region of HER2 alone and in complex with the Herceptin Fab. *Nature* 421: 756-760.
- Crone, S.A., Negro, A., Trumpp, A., Giovannini, M. and Lee, K.F. 2003. Colonic epithelial expression of ErbB-2 is required for postnatal maintenance of the enteric nervous system. *Neuron* 37: 29-40.
- Escher, P., Lacazette, E., Courtet, M., Blindenbacher, A., Landmann, L., Bezakova, G., Lloyd, K.C., Mueller, U. and Brenner, H.R. 2005. Synapses form in skeletal muscles lacking neuregulin receptors. *Science* 308: 1920-1923.

CHROMOSOMAL LOCATION

Genetic locus: ErbB2 (mouse) mapping to 11 D.

PRODUCT

Neu (m): 293T Lysate represents a lysate of mouse Neu transfected 293T cells and is provided as 100 µg protein in 200 µl SDS-PAGE buffer.

APPLICATIONS

Neu (m): 293T Lysate is suitable as a Western Blotting positive control for mouse reactive Neu antibodies. Recommended use: 10-20 µl per lane.

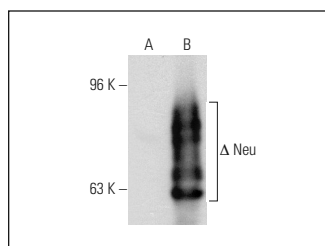
Control 293T Lysate: sc-117752 is available as a Western Blotting negative control lysate derived from non-transfected 293T cells.

Neu (3B5): sc-33684 is recommended as a positive control antibody for Western Blot analysis of enhanced mouse Neu expression in Neu transfected 293T cells (starting dilution 1:100, dilution range 1:100-1:1,000).

RECOMMENDED SUPPORT REAGENTS

To ensure optimal results, the following support reagents are recommended:
1) Western Blotting: use m-IgGκ BP-HRP: sc-516102 or m-IgGκ BP-HRP (Cruz Marker): sc-516102-CM (dilution range: 1:1000-1:10000), Cruz Marker™ Molecular Weight Standards: sc-2035, UltraCruz® Blocking Reagent: sc-516214 and Western Blotting Luminol Reagent: sc-2048.

DATA



Neu (3B5): sc-33684. Western blot analysis of Neu expression in non-transfected: sc-117752 (A) and truncated mouse Neu transfected: sc-125694 (B) 293T whole cell lysates.

STORAGE

Store at -20° C. Repeated freezing and thawing should be minimized. Sample vial should be boiled once prior to use. Non-hazardous. No MSDS required.

RESEARCH USE

For research use only, not for use in diagnostic procedures.

PROTOCOLS

See our web site at www.scbt.com for detailed protocols and support products.