



SZABO SCANDIC

Part of Europa Biosite

Produktinformation



Forschungsprodukte & Biochemikalien



Zellkultur & Verbrauchsmaterial



Diagnostik & molekulare Diagnostik



Laborgeräte & Service

Weitere Information auf den folgenden Seiten!
See the following pages for more information!



Lieferung & Zahlungsart

siehe unsere [Liefer- und Versandbedingungen](#)

Zuschläge

- Mindermengenzuschlag
- Trockeneiszuschlag
- Gefahrgutzuschlag
- Expressversand

SZABO-SCANDIC HandelsgmbH

Quellenstraße 110, A-1100 Wien

T. +43(0)1 489 3961-0

F. +43(0)1 489 3961-7

mail@szabo-scandic.com

www.szabo-scandic.com

[linkedin.com/company/szaboscandic](https://www.linkedin.com/company/szaboscandic) 

podoplanin (m): 293T Lysate: sc-125842

BACKGROUND

Puromycin aminonucleoside nephrosis (PAN) is a rat model for human minimal change nephropathy. During PAN, severe proteinuria is induced that is paralleled by a reduced expression of a rat podocyte protein, named podoplanin. Podoplanin, also known as glycoprotein 38 (gp38), is a type I membrane protein. Podoplanin localizes in stromal cells of peripheral lymphoid tissue and thymic epithelial cells. As a regulator of the lymphatic endothelium, podoplanin probably plays a role in maintaining the unique shape of podocytes.

REFERENCES

- Farr, A.G., Berry, M.L., Kim, A., Nelson, A.J., Welch, M.P. and Aruffo, A. 1992. Characterization and cloning of a novel glycoprotein expressed by stromal cells in T-dependent areas of peripheral lymphoid tissues. *J. Exp. Med.* 176: 1477-1482.
- Farr, A., Nelson, A. and Hosier, S. 1992. Characterization of an antigenic determinant preferentially expressed by type I epithelial cells in the murine thymus. *J. Histochem. Cytochem.* 40: 651-664.
- Schoppmann, S.F, Birner, P., Studer, P. and Breiteneder-Geleff, S. 2001. Lymphatic microvessel density and lymphovascular invasion assessed by anti-podoplanin immunostaining in human breast cancer. *Anticancer Res.* 21: 2351-2355.
- Ramirez, M.I., Millien, G., Hinds, A., Cao, Y., Seldin, D.C. and Williams, M.C. 2003. T1 α , a lung type I cell differentiation gene, is required for normal lung cell proliferation and alveolus formation at birth. *Dev. Biol.* 256: 61-72.
- Groger, M., Loewe, R., Holthoner, W., Embacher, R., Pillinger, M., Herron, G.S., Wolff, K. and Petzelbauer, P. 2004. IL-3 induces expression of lymphatic markers PROX1 and podoplanin in human endothelial cells. *J. Immunol.* 173: 7161-7169.
- Nisato, R.E, Harrison, J.A, Buser, R., Orci, L., Rinsch, C., Montesano, R., Dupraz, P. and Pepper, M.S. 2004. Generation and characterization of telomerase-transfected human lymphatic endothelial cells with an extended life span. *Am. J. Pathol.* 165: 11-24.
- Hara, T., Katakai, T., Lee, J.H., Nambu, Y., Nakajima-Nagata, N., Gonda, H., Sugai, M. and Shimizu, A. 2006. A transmembrane chemokine, C-X-C chemokine ligand 16, expressed by lymph node fibroblastic reticular cells has the potential to regulate T cell migration and adhesion. *Int. Immunol.* 18: 301-311.
- Zhang, K., Barragan-Adjemian, C., Ye, L., Kotha, S., Dallas, M., Lu, Y., Zhao, S., Harris, M., Harris, S.E., Feng, J.Q. and Bonewald, L.F. 2006. E11/gp38 selective expression in osteocytes: regulation by mechanical strain and role in dendrite elongation. *Mol. Cell. Biol.* 26: 4539-4552.

STORAGE

Store at -20° C. Repeated freezing and thawing should be minimized. Sample vial should be boiled once prior to use. Non-hazardous. No MSDS required.

PROTOCOLS

See our web site at www.scbt.com for detailed protocols and support products.

CHROMOSOMAL LOCATION

Genetic locus: Gp38 (mouse) mapping to 4 E1.

PRODUCT

podoplanin (m): 293T Lysate represents a lysate of mouse podoplanin transfected 293T cells and is provided as 100 μ g protein in 200 μ l SDS-PAGE buffer.

APPLICATIONS

podoplanin (m): 293T Lysate is suitable as a Western Blotting positive control for mouse reactive podoplanin antibodies. Recommended use: 10-20 μ l per lane.

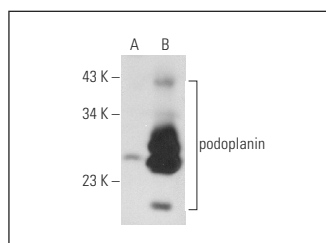
Control 293T Lysate: sc-117752 is available as a Western Blotting negative control lysate derived from non-transfected 293T cells.

podoplanin (B-11): sc-166906 is recommended as a positive control antibody for Western Blot analysis of enhanced mouse podoplanin expression in podoplanin transfected 293T cells (starting dilution 1:100, dilution range 1:100-1:1,000).

RECOMMENDED SUPPORT REAGENTS

To ensure optimal results, the following support reagents are recommended:
 1) Western Blotting: use m-IgG κ BP-HRP: sc-516102 or m-IgG κ BP-HRP (Cruz Marker): sc-516102-CM (dilution range: 1:1000-1:10000), Cruz Marker™ Molecular Weight Standards: sc-2035, UltraCruz® Blocking Reagent: sc-516214 and Western Blotting Luminol Reagent: sc-2048.

DATA



podoplanin (B-11): sc-166906. Western blot analysis of podoplanin expression in non-transfected: sc-117752 (A) and mouse podoplanin transfected: sc-125842 (B) 293T whole cell lysates.

RESEARCH USE

For research use only, not for use in diagnostic procedures.