



SZABO SCANDIC

Part of Europa Biosite

Produktinformation



Forschungsprodukte & Biochemikalien



Zellkultur & Verbrauchsmaterial



Diagnostik & molekulare Diagnostik



Laborgeräte & Service

Weitere Information auf den folgenden Seiten!
See the following pages for more information!



Lieferung & Zahlungsart

siehe unsere [Liefer- und Versandbedingungen](#)

Zuschläge

- Mindermengenzuschlag
- Trockeneiszuschlag
- Gefahrgutzuschlag
- Expressversand

SZABO-SCANDIC HandelsgmbH

Quellenstraße 110, A-1100 Wien

T. +43(0)1 489 3961-0

F. +43(0)1 489 3961-7

mail@szabo-scandic.com

www.szabo-scandic.com

[linkedin.com/company/szaboscandic](https://www.linkedin.com/company/szaboscandic) 

RPA 70 kDa subunit (m): 293T Lysate: sc-125947

BACKGROUND

The single-stranded-DNA-binding proteins (SSBs) are essential for DNA function in prokaryotic and eukaryotic cells, mitochondria, phages and viruses. Replication protein A (RPA), a highly conserved eukaryotic protein, is a heterotrimeric SSB. RPA plays an important role in DNA replication, recombination and repair. The binding of human RPA (hRPA) to DNA involves molecular polarity in which initial hRPA binding occurs on the 5' side of an ssDNA substrate and then extends in the 3' direction to create a stably bound hRPA. RPA is a major damage-recognition protein involved in the early stages of nucleotide excision repair. It can also play a role in telomere maintenance. The RPA 70 kDa subunit binds to ssDNA and mediates interactions with many cellular and viral proteins. The DNA binding domain lies in the middle of RPA 70 kDa subunit and comprises two structurally homologous subdomains oriented in tandem. RPA contains a conserved four cysteine-type zinc finger motif, which mediates the transition of RPA-ssDNA interaction to a stable RPA-ssDNA complex in a redox-dependent manner.

REFERENCES

- Erdile, L.F., Wold, M.S. and Kelly, T.J. 1990. The primary structure of the 32 kDa subunit of human replication protein A. *J. Biol. Chem.* 265: 3177-3182.
- Erdile, L.F., Heyer, W.D., Kolodner, R. and Kelly, T. 1991. Characterization of a cDNA encoding the 70 kDa single-stranded DNA-binding subunit of human replication protein A and the role of the protein in DNA replication. *J. Biol. Chem.* 266: 12090-12098.
- Bochkarev, A., Pfuetzner, R.A., Edwards, A.M. and Frappier, L. 1997. Structure of the single-stranded-DNA-binding domain of replication protein A bound to DNA. *Nature* 385: 176-181.
- Kim, J., Kim, D. and Chung, J. 2000. Replication protein a 32 kDa subunit (RPA p32) binds the SH2 domain of Stat3 and regulates its transcriptional activity. *Cell Biol. Int.* 24: 467-473.
- Mer, G., Bochkarev, A., Gupta, R., Bochkareva, E., Frappier, L., Ingles, C.J., Edwards, A.M. and Chazin, W.J. 2000. Structural basis for the recognition of DNA repair proteins UNG2, XPA, and Rad52 by replication factor RPA. *Cell* 103: 449-456.
- Wang, M., Mahrenholz, A. and Lee, S.H. 2000. RPA stabilizes the XPA-damaged DNA complex through protein-protein interaction. *Biochemistry* 39: 64-69.
- Iftode, C. and Borowiec, J.A. 2000. 5'→3' molecular polarity of human replication protein (hRPA) binding to pseudo-origin DNA substrates. *Biochemistry* 39: 11970-119981.
- You, J.S., Wang, M. and Lee, S.H. 2000. Functional characterization of zinc-finger motif in redox regulation of RPA-ssDNA interaction. *Biochemistry* 39: 12953-12958.
- Smith, J., Zou, H. and Rothstein, R. 2000. Characterization of genetic interactions with RFA1: the role of RPA in DNA replication and telomere maintenance. *Biochimie* 82: 71-78.

CHROMOSOMAL LOCATION

Genetic locus: Rpa1 (mouse) mapping to 11 B5.

PRODUCT

RPA 70 kDa subunit (m): 293T Lysate represents a lysate of mouse RPA 70 kDa subunit transfected 293T cells and is provided as 100 µg protein in 200 µl SDS-PAGE buffer.

APPLICATIONS

RPA 70 kDa subunit (m): 293T Lysate is suitable as a Western Blotting positive control for mouse reactive RPA 70 kDa subunit antibodies. Recommended use: 10-20 µl per lane.

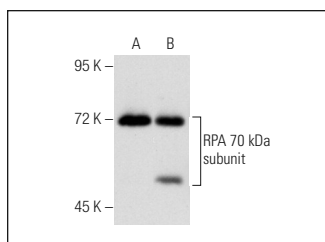
Control 293T Lysate: sc-117752 is available as a Western Blotting negative control lysate derived from non-transfected 293T cells.

RPA 70 kDa subunit (H-7): sc-48425 is recommended as a positive control antibody for Western Blot analysis of enhanced mouse RPA 70 kDa subunit expression in RPA 70 kDa subunit transfected 293T cells (starting dilution 1:100, dilution range 1:100-1:1,000).

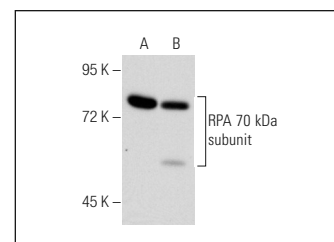
RECOMMENDED SUPPORT REAGENTS

To ensure optimal results, the following support reagents are recommended:
1) Western Blotting: use m-IgGκ BP-HRP: sc-516102 or m-IgGκ BP-HRP (Cruz Marker): sc-516102-CM (dilution range: 1:1000-1:10000), Cruz Marker™ Molecular Weight Standards: sc-2035, UltraCruz® Blocking Reagent: sc-516214 and Western Blotting Luminol Reagent: sc-2048.

DATA



RPA 70 kDa subunit (H-7): sc-48425. Western blot analysis of RPA 70 kDa subunit expression in non-transfected: sc-117752 (A) and mouse RPA 70 kDa subunit transfected: sc-125947 (B) 293T whole cell lysates.



RPA 70 kDa subunit (B-6): sc-28304. Western blot analysis of RPA 70 kDa subunit expression in non-transfected: sc-117752 (A) and mouse RPA 70 kDa subunit transfected: sc-125947 (B) 293T whole cell lysates.

STORAGE

Store at -20° C. Repeated freezing and thawing should be minimized. Sample vial should be boiled once prior to use. Non-hazardous. No MSDS required.

RESEARCH USE

For research use only, not for use in diagnostic procedures.

PROTOCOLS

See our web site at www.scbt.com for detailed protocols and support products.