



# SZABO SCANDIC

Part of Europa Biosite

## Produktinformation



Forschungsprodukte & Biochemikalien



Zellkultur & Verbrauchsmaterial



Diagnostik & molekulare Diagnostik



Laborgeräte & Service

Weitere Information auf den folgenden Seiten!  
See the following pages for more information!



### Lieferung & Zahlungsart

siehe unsere [Liefer- und Versandbedingungen](#)

### Zuschläge

- Mindermengenzuschlag
- Trockeneiszuschlag
- Gefahrgutzuschlag
- Expressversand

### SZABO-SCANDIC HandelsgmbH

Quellenstraße 110, A-1100 Wien

T. +43(0)1 489 3961-0

F. +43(0)1 489 3961-7

[mail@szabo-scandic.com](mailto:mail@szabo-scandic.com)

[www.szabo-scandic.com](http://www.szabo-scandic.com)

[linkedin.com/company/szaboscandic](https://www.linkedin.com/company/szaboscandic) 

# Sam 68 (m): 293T Lysate: sc-125954

## BACKGROUND

Sam 68 is a protein that is phosphorylated on tyrosine and functions as a substrate for Src family tyrosine kinases during mitosis. Sam 68 also associates with several SH2 and SH3 domain-containing signaling proteins, such as GRB2 and PLC  $\gamma$ 1. Originally cloned as Ras GAP-associated p62, further investigations have shown that Sam 68 and Ras GAP-associated p62 are not antigenically related, nor are they encoded by the same gene. Like Sam 68, the Sam 68-like mammalian proteins, SLM-1 and SLM-2, demonstrate RNA binding activity. Also like Sam 68, SLM-1 is tyrosine phosphorylated and functions as an adapter protein for signaling molecules, including GRB2, PLC  $\gamma$ 1, Fyn and Ras GAP. SLM-2 is not tyrosine phosphorylated, nor does it appear to associate with GRB2, PLC  $\gamma$ 1, Fyn or Ras GAP, indicating that SLM-2 may not be an adapter protein for these proteins.

## REFERENCES

1. Fumagalli, S., Totty, N.F., Hsuan, J.J. and Courtneidge, S.A. 1994. A target for Src in mitosis. *Nature* 368: 871-874.
2. Maa, M.C., Leu, T.H., Trandel, B.J., Chang, J.H. and Parsons, S.J. 1994. A protein that is highly related to GTPase-activating protein-associated p62 complexes with phospholipase C  $\gamma$ . *Mol. Cell. Biol.* 14: 5466-5473.
3. Richard, S., Yu, D., Blumer, K.J., Hausladen, D., Olszowy, M.W., Connelly, P.A. and Shaw, A.S. 1995. Association of p62, a multifunctional SH2- and SH3-domain-binding protein, with src family tyrosine kinases, GRB2, and phospholipase C  $\gamma$ 1. *Mol. Cell. Biol.* 15: 186-197.
4. Lock, P., Fumagalli, S., Polakis, P., McCormick, F. and Courtneidge, S.A. 1996. The human p62 cDNA encodes Sam68 and not the Ras GAP-associated p62 protein. *Cell* 84: 23-24.
5. Guitard, E., Barlat, I., Maurier, F., Schweighoffer, F. and Tocque, B. 1998. Sam 68 is a Ras GAP-associated protein in mitosis. *Biochem. Biophys. Res. Commun.* 245: 562-566.
6. Di Fruscio, M., Chen, T. and Richard, S. 1999. Characterization of Sam 68-like mammalian proteins SLM-1 and SLM-2: SLM-1 is a Src substrate during mitosis. *Proc. Natl. Acad. Sci. USA* 96: 2710-2715.

## CHROMOSOMAL LOCATION

Genetic locus: Khdrbs1 (mouse) mapping to 4 D2.2.

## PRODUCT

Sam 68 (m): 293T Lysate represents a lysate of mouse Sam 68 transfected 293T cells and is provided as 100  $\mu$ g protein in 200  $\mu$ l SDS-PAGE buffer.

## APPLICATIONS

Sam 68 (m): 293T Lysate is suitable as a Western Blotting positive control for mouse reactive Sam 68 antibodies. Recommended use: 10-20  $\mu$ l per lane.

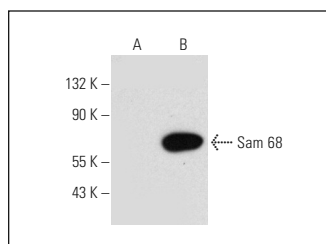
Control 293T Lysate: sc-117752 is available as a Western Blotting negative control lysate derived from non-transfected 293T cells.

Sam 68 (H-4): sc-514468 is recommended as a positive control antibody for Western Blot analysis of enhanced mouse Sam 68 expression in Sam 68 transfected 293T cells (starting dilution 1:100, dilution range 1:100-1:1,000).

## RECOMMENDED SUPPORT REAGENTS

To ensure optimal results, the following support reagents are recommended:  
 1) Western Blotting: use m-IgG $\kappa$  BP-HRP: sc-516102 or m-IgG $\kappa$  BP-HRP (Cruz Marker): sc-516102-CM (dilution range: 1:1000-1:10000), Cruz Marker™ Molecular Weight Standards: sc-2035, UltraCruz® Blocking Reagent: sc-516214 and Western Blotting Luminol Reagent: sc-2048.

## DATA



Sam 68 (H-4): sc-514468. Western blot analysis of Sam 68 expression in non-transfected: sc-117752 (A) and mouse Sam 68 transfected: sc-125954 (B) 293T whole cell lysates.

## STORAGE

Store at -20° C. Repeated freezing and thawing should be minimized. Sample vial should be boiled once prior to use. Non-hazardous. No MSDS required.

## RESEARCH USE

For research use only, not for use in diagnostic procedures.

## PROTOCOLS

See our web site at [www.scbt.com](http://www.scbt.com) for detailed protocols and support products.