



SZABO SCANDIC

Part of Europa Biosite

Produktinformation



Forschungsprodukte & Biochemikalien



Zellkultur & Verbrauchsmaterial



Diagnostik & molekulare Diagnostik



Laborgeräte & Service

Weitere Information auf den folgenden Seiten!
See the following pages for more information!



Lieferung & Zahlungsart

siehe unsere [Liefer- und Versandbedingungen](#)

Zuschläge

- Mindermengenzuschlag
- Trockeneiszuschlag
- Gefahrgutzuschlag
- Expressversand

SZABO-SCANDIC HandelsgmbH

Quellenstraße 110, A-1100 Wien

T. +43(0)1 489 3961-0

F. +43(0)1 489 3961-7

mail@szabo-scandic.com

www.szabo-scandic.com

[linkedin.com/company/szaboscandic](https://www.linkedin.com/company/szaboscandic) 

SMPDL3B (m2): 293T Lysate: sc-126022

BACKGROUND

SMPDL3B (sphingomyelin phosphodiesterase, acid-like 3B), also known as ASMLPD or ASML3B (acid sphingomyelinase-like phosphodiesterase 3B), is a 455 amino acid secreted protein belonging to the acid sphingomyelinase family. It is expressed in granulosa cells of the ovarian follicle and is a homolog of ASM (acid sphingomyelinase). ASM is a lysosomal protein that hydrolyzes sphingomyelin to ceramide and phosphocholine playing an important role in apoptosis of germ cell lines. Deficiency of ASM is associated with type A and type B Niemann-Pick disease. Type A is a fatal neurodegenerative disorder seen in infancy and resulting in death by age three, whereas type B is a non-neuropathic disease with a later onset.

REFERENCES

- Quintern, L.E., Weitz, G., Nehrkorn, H., Tager, J.M., Schram, A.W. and Sandhoff, K. 1987. Acid sphingomyelinase from human urine: purification and characterization. *Biochim. Biophys. Acta* 922: 323-336.
- Schuchman, E.H., Suchi, M., Takahashi, T., Sandhoff, K. and Desnick, R.J. 1991. Human acid sphingomyelinase. Isolation, nucleotide sequence and expression of the full-length and alternatively spliced cDNAs. *J. Biol. Chem.* 266: 8531-8539.
- Levrano, O., Desnick, R.J. and Schuchman, E.H. 1991. Niemann-Pick disease: a frequent missense mutation in the acid sphingomyelinase gene of Ashkenazi Jewish type A and B patients. *Proc. Natl. Acad. Sci. USA* 88: 3748-3752.
- Takahashi, T., Suchi, M., Desnick, R.J., Takada, G. and Schuchman, E.H. 1992. Identification and expression of five mutations in the human acid sphingomyelinase gene causing types A and B Niemann-Pick disease. Molecular evidence for genetic heterogeneity in the neuropathic and non-neuropathic forms. *J. Biol. Chem.* 267: 12552-12558.
- Langmann, T., Buechler, C., Ries, S., Schaeffler, A., Aslanidis, C., Schuierer, M., Weiler, M., Sandhoff, K., de Jong, P.J. and Schmitz, G. 1999. Transcription factors Sp1 and AP-2 mediate induction of acid sphingomyelinase during monocytic differentiation. *J. Lipid Res.* 40: 870-880.
- Perosa, F., Favoino, E., Caragnano, M.A. and Dammacco, F. 2006. Generation of biologically active linear and cyclic peptides has revealed a unique fine specificity of rituximab and its possible cross-reactivity with acid sphingomyelinase-like phosphodiesterase 3b precursor. *Blood* 107: 1070-1077.
- Rizzolio, F., Sala, C., Alboresi, S., Bione, S., Gilli, S., Goegan, M., Pramparo, T., Zuffardi, O. and Toniolo, D. 2007. Epigenetic control of the critical region for premature ovarian failure on autosomal genes translocated to the X chromosome: a hypothesis. *Hum. Genet.* 121: 441-450.

CHROMOSOMAL LOCATION

Genetic locus: *Smpdl3b* (mouse) mapping to 4 D2.3.

PRODUCT

SMPDL3B (m2): 293T Lysate represents a lysate of mouse SMPDL3B transfected 293T cells and is provided as 100 µg protein in 200 µl SDS-PAGE buffer.

APPLICATIONS

SMPDL3B (m2): 293T Lysate is suitable as a Western Blotting positive control for mouse reactive SMPDL3B antibodies. Recommended use: 10-20 µl per lane.

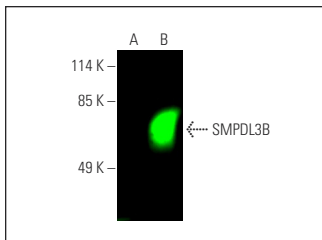
Control 293T Lysate: sc-117752 is available as a Western Blotting negative control lysate derived from non-transfected 293T cells.

SMPDL3B (H-3): sc-137113 is recommended as a positive control antibody for Western Blot analysis of enhanced mouse SMPDL3B expression in SMPDL3B transfected 293T cells (starting dilution 1:100, dilution range 1:100-1:1,000).

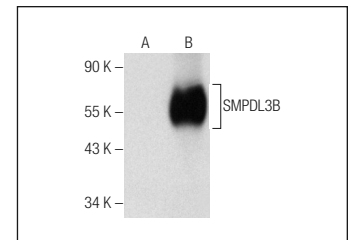
RECOMMENDED SUPPORT REAGENTS

To ensure optimal results, the following support reagents are recommended:
 1) Western Blotting: use m-IgGκ BP-HRP: sc-516102 or m-IgGκ BP-HRP (Cruz Marker): sc-516102-CM (dilution range: 1:1000-1:10000), Cruz Marker™ Molecular Weight Standards: sc-2035, UltraCruz® Blocking Reagent: sc-516214 and Western Blotting Luminol Reagent: sc-2048.

DATA



SMPDL3B (H-3): sc-137113. Near-infrared western blot analysis of SMPDL3B expression in non-transfected: sc-117752 (A) and mouse SMPDL3B transfected: sc-126022 (B) 293T whole cell lysates. Blocked with UltraCruz® Blocking Reagent: sc-516214. Detection reagent used: m-IgGκ BP-CFL 680: sc-516180.



SMPDL3B (B-1): sc-376870. Western blot analysis of SMPDL3B expression in non-transfected: sc-117752 (A) and mouse SMPDL3B transfected: sc-126022 (B) 293T whole cell lysates.

STORAGE

Store at -20° C. Repeated freezing and thawing should be minimized. Sample vial should be boiled once prior to use. Non-hazardous. No MSDS required.

RESEARCH USE

For research use only, not for use in diagnostic procedures.

PROTOCOLS

See our web site at www.scbt.com for detailed protocols and support products.