



# SZABO SCANDIC

Part of Europa Biosite

## Produktinformation



Forschungsprodukte & Biochemikalien



Zellkultur & Verbrauchsmaterial



Diagnostik & molekulare Diagnostik



Laborgeräte & Service

Weitere Information auf den folgenden Seiten!  
See the following pages for more information!



### Lieferung & Zahlungsart

siehe unsere [Liefer- und Versandbedingungen](#)

### Zuschläge

- Mindermengenzuschlag
- Trockeneiszuschlag
- Gefahrgutzuschlag
- Expressversand

### SZABO-SCANDIC HandelsgmbH

Quellenstraße 110, A-1100 Wien

T. +43(0)1 489 3961-0

F. +43(0)1 489 3961-7

[mail@szabo-scandic.com](mailto:mail@szabo-scandic.com)

[www.szabo-scandic.com](http://www.szabo-scandic.com)

[linkedin.com/company/szaboscandic](https://www.linkedin.com/company/szaboscandic) 

# ASTL (m): 293T Lysate: sc-126457

## BACKGROUND

ASTL (astacin-like metalloendopeptidase), also known as ovastacin, is a 435 amino acid protein that belongs to the astacin family of metalloproteases. The human ASTL, which shares a 78% sequence identity with mouse ASTL, contains an N-terminal signal peptide, a prodomain, a zinc-dependent metalloprotease domain and a C-terminal extension that is likely to be heavily O-glycosylated. Highly expressed in unfertilized oocytes, ASTL expression drops to undetectable levels upon fertilization. ASTL has also been shown to be under hormonal regulation, as superovulation caused a dramatic increase in the expression of ASTL. The catalytic activity of ASTL is inhibited by EDTA and the wide spectrum metalloproteinase inhibitor batimastat (BB-94). The gene encoding ASTL maps to chromosome 2q11.1. Two isoforms of ASTL2 exist as a result of alternative splicing events.

## REFERENCES

1. Stöcker, W., et al. 1993. Implications of the three-dimensional structure of astacin for the structure and function of the astacin family of zinc-endopeptidases. *Eur. J. Biochem.* 214: 215-231.
2. Bond, J.S. and Beynon, R.J. 1995. The astacin family of metalloendopeptidases. *Protein Sci.* 4: 1247-1261.
3. Quesada, V., et al. 2004. Identification and characterization of human and mouse ovastacin: a novel metalloproteinase similar to hatching enzymes from arthropods, birds, amphibians, and fish. *J. Biol. Chem.* 279: 26627-26634.
4. Online Mendelian Inheritance in Man, OMIM™. 2004. Johns Hopkins University, Baltimore, MD. MIM Number: 608860. World Wide Web URL: <http://www.ncbi.nlm.nih.gov/omim/>
5. Semenova, S.A. and Rudenskaia, G.N. 2008. The astacin family of metalloproteinases. *Biomed. Khim.* 54: 531-554.
6. Sterchi, E.E. 2008. Special issue: metzincin metalloproteinases. *Mol. Aspects Med.* 29: 255-257.
7. Sterchi, E.E., et al. 2008. Meprins, membrane-bound and secreted astacin metalloproteinases. *Mol. Aspects Med.* 29: 309-328.
8. Becker-Paul, C., et al. 2009. News from an ancient world: two novel astacin metalloproteases from the horseshoe crab. *J. Mol. Biol.* 385: 236-248.

## CHROMOSOMAL LOCATION

Genetic locus: *Astl* (mouse) mapping to 2 F1.

## PRODUCT

ASTL (m): 293T Lysate represents a lysate of mouse ASTL transfected 293T cells and is provided as 100 µg protein in 200 µl SDS-PAGE buffer.

## STORAGE

Store at -20° C. Repeated freezing and thawing should be minimized. Sample vial should be boiled once prior to use. Non-hazardous. No MSDS required.

## APPLICATIONS

ASTL (m): 293T Lysate is suitable as a Western Blotting positive control for mouse reactive ASTL antibodies. Recommended use: 10-20 µl per lane.

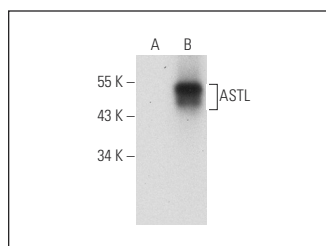
Control 293T Lysate: sc-117752 is available as a Western Blotting negative control lysate derived from non-transfected 293T cells.

ASTL (D-8): sc-514054 is recommended as a positive control antibody for Western Blot analysis of enhanced mouse ASTL expression in ASTL transfected 293T cells (starting dilution 1:100, dilution range 1:100-1:1,000).

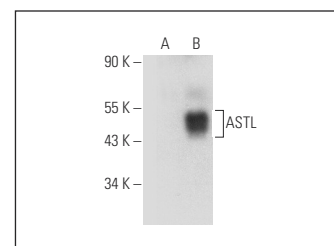
## RECOMMENDED SUPPORT REAGENTS

To ensure optimal results, the following support reagents are recommended: 1) Western Blotting: use m-IgGκ BP-HRP: sc-516102 or m-IgGκ BP-HRP (Cruz Marker): sc-516102-CM (dilution range: 1:1000-1:10000), Cruz Marker™ Molecular Weight Standards: sc-2035, UltraCruz® Blocking Reagent: sc-516214 and Western Blotting Luminol Reagent: sc-2048.

## DATA



ASTL (D-8): sc-514054. Western blot analysis of ASTL expression in non-transfected: sc-117752 (A) and mouse ASTL transfected: sc-126457 (B) 293T whole cell lysates.



ASTL (F-10): sc-514391. Western blot analysis of ASTL expression in non-transfected: sc-117752 (A) and mouse ASTL transfected: sc-126457 (B) 293T whole cell lysates.

## RESEARCH USE

For research use only, not for use in diagnostic procedures.

## PROTOCOLS

See our web site at [www.scbt.com](http://www.scbt.com) for detailed protocols and support products.