



SZABO SCANDIC

Part of Europa Biosite

Produktinformation



Forschungsprodukte & Biochemikalien



Zellkultur & Verbrauchsmaterial



Diagnostik & molekulare Diagnostik



Laborgeräte & Service

Weitere Information auf den folgenden Seiten!
See the following pages for more information!



Lieferung & Zahlungsart

siehe unsere [Liefer- und Versandbedingungen](#)

Zuschläge

- Mindermengenzuschlag
- Trockeneiszuschlag
- Gefahrgutzuschlag
- Expressversand

SZABO-SCANDIC HandelsgmbH

Quellenstraße 110, A-1100 Wien

T. +43(0)1 489 3961-0

F. +43(0)1 489 3961-7

mail@szabo-scandic.com

www.szabo-scandic.com

[linkedin.com/company/szaboscandic](https://www.linkedin.com/company/szaboscandic) 

Bim (m2): 293T Lysate: sc-126502

BACKGROUND

Pro-apoptotic Bcl-2 family members promote cell death by neutralizing their anti-apoptotic relatives, which otherwise maintain cell viability by regulating caspase activity. Bim belongs to the BH3-only subgroup of Bcl-2-related proteins and exists in three distinct isoforms, Bim_S (short), Bim_L (long) and Bim_{EL} (extra long). ERK 1/2 phosphorylates Bim_{EL}, resulting in rapid degradation of the isoform via the proteasome pathway. At least three sites for ERK 1/2 phosphorylation exist on Bim_{EL}, whereas ERK 1/2 does not effect Bim_S and Bim_L, implying a unique role for Bim_{EL} in cell survival signaling.

REFERENCES

1. O'Reilly, L.A., et al. 2000. The proapoptotic BH3-only protein Bim is expressed in hematopoietic, epithelial, neuronal, and germ cells. *Am. J. Pathol.* 157: 449-461.
2. Seward, R.J., et al. 2003. Phosphorylation of the pro-apoptotic protein Bim in lymphocytes is associated with protection from apoptosis. *Mol. Immunol.* 39: 983-993.
3. Luciano F., et al. 2003. Phosphorylation of Bim_{EL} by ERK 1/2 on Serine 69 promotes its degradation via the proteasome pathway and regulates its proapoptotic function. *Oncogene* 22: 6785-6793.
4. Ley, R., et al. 2004. Extracellular signal-regulated kinases 1/2 are serum-stimulated "Bim_{EL} kinases" that bind to the BH3-only protein Bim_{EL} causing its phosphorylation and turnover. *J. Biol. Chem.* 279: 8837-8847.
5. Harada, H., et al. 2004. Survival factor-induced extracellular signal-regulated kinase phosphorylates Bim, inhibiting its association with BAX and proapoptotic activity. *Proc. Natl. Acad. Sci. USA* 101: 15313-15317.
6. Gomez-Bougie, P., et al. 2004. The imbalance between Bim and Mcl-1 expression controls the survival of human myeloma cells. *Eur. J. Immunol.* 34: 3156-3164.
7. Herrant, M., et al. 2004. Cleavage of Mcl-1 by caspases impaired its ability to counteract Bim-induced apoptosis. *Oncogene* 23: 7863-7873.
8. Wang, P., et al. 2004. Bim is an apoptosis sensor that responds to loss of survival signals delivered by epidermal growth factor but not those provided by integrins. *J. Biol. Chem.* 279: 41280-41285.
9. Kuribara, R., et al. 2004. Roles of Bim in apoptosis of normal and Bcr-Abl-expressing hematopoietic progenitors. *Mol. Cell. Biol.* 24: 6172-6183.

CHROMOSOMAL LOCATION

Genetic locus: Bcl2l11 (mouse) mapping to 2 F1.

PRODUCT

Bim (m2): 293T Lysate represents a lysate of mouse Bim transfected 293T cells and is provided as 100 µg protein in 200 µl SDS-PAGE buffer.

STORAGE

Store at -20° C. Repeated freezing and thawing should be minimized. Sample vial should be boiled once prior to use. Non-hazardous. No MSDS required.

APPLICATIONS

Bim (m2): 293T Lysate is suitable as a Western Blotting positive control for mouse reactive Bim antibodies. Recommended use: 10-20 µl per lane.

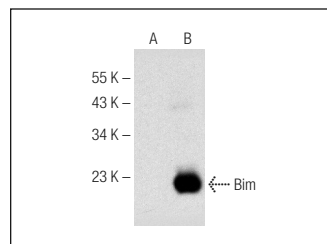
Control 293T Lysate: sc-117752 is available as a Western Blotting negative control lysate derived from non-transfected 293T cells.

Bim (H-5): sc-374358 is recommended as a positive control antibody for Western Blot analysis of enhanced mouse Bim expression in Bim transfected 293T cells (starting dilution 1:100, dilution range 1:100-1:1,000).

RECOMMENDED SUPPORT REAGENTS

To ensure optimal results, the following support reagents are recommended:
 1) Western Blotting: use m-IgGκ BP-HRP: sc-516102 or m-IgGκ BP-HRP (Cruz Marker): sc-516102-CM (dilution range: 1:1000-1:10000), Cruz Marker™ Molecular Weight Standards: sc-2035, UltraCruz® Blocking Reagent: sc-516214 and Western Blotting Luminol Reagent: sc-2048.

DATA



Bim (H-5): sc-374358. Western blot analysis of Bim expression in non-transfected: sc-117752 (A) and mouse Bim transfected: sc-126502 (B) 293T whole cell lysates.

RESEARCH USE

For research use only, not for use in diagnostic procedures.

PROTOCOLS

See our web site at www.scbt.com for detailed protocols and support products.