



SZABO SCANDIC

Part of Europa Biosite

Produktinformation



Forschungsprodukte & Biochemikalien



Zellkultur & Verbrauchsmaterial



Diagnostik & molekulare Diagnostik



Laborgeräte & Service

Weitere Information auf den folgenden Seiten!
See the following pages for more information!



Lieferung & Zahlungsart

siehe unsere [Liefer- und Versandbedingungen](#)

Zuschläge

- Mindermengenzuschlag
- Trockeneiszuschlag
- Gefahrgutzuschlag
- Expressversand

SZABO-SCANDIC HandelsgmbH

Quellenstraße 110, A-1100 Wien

T. +43(0)1 489 3961-0

F. +43(0)1 489 3961-7

mail@szabo-scandic.com

www.szabo-scandic.com

[linkedin.com/company/szaboscandic](https://www.linkedin.com/company/szaboscandic)

CALM (m): 293T Lysate: sc-126567

BACKGROUND

Clathrin-coated pits and vesicles are assembled for receptor-mediated endocytosis through interaction with clathrin associated protein complexes. Vesicle transport is mediated from the *trans*-Golgi network by the adapter complex AP-1 and from the plasma membrane by the AP-2 complex. The AP-1 and AP-2 adapter protein complexes consist of clathrin binding adaptin proteins (γ and β 1 for AP-1, α and β 2 for AP-2) and two smaller subunits known as AP50 and AP17. The α - and β -Adaptin chains have a similar two-domain organization with C-terminal domains that vary in both sequence and length. α -Adaptin splice variants A and C display variable relative expression levels and differential distribution in different tissues. AP180 (also designated AP-3 or F1-20) is a synapse-specific clathrin assembly protein. The protein CALM (clathrin assembly protein lymphoid myeloid leukemia) is highly homologous to AP180 and may also be involved in clathrin assembly.

REFERENCES

1. Robinson, M.S. 1989. Cloning of cDNAs encoding two related 100-kD coated vesicle proteins (α -Adaptins). *J. Cell Biol.* 108: 833-842.
2. Kirchhausen, T., et al. 1989. Structural and functional division into two domains of the large (100- to 115-kDa) chains of the clathrin-associated protein complex AP-2. *Proc. Natl. Acad. Sci. USA* 86: 2612-2616.
3. Robinson, M.S. 1990. Cloning and expression of γ -Adaptin, a component of clathrin-coated vesicles associated with the Golgi apparatus. *J. Cell Biol.* 111: 2319-2326.
4. Ponnambalam, S., et al. 1990. Conservation and diversity in families of coated vesicle adaptins. *J. Biol. Chem.* 265: 4814-4820.
5. Morris, S.A., et al. 1993. Clathrin assembly protein AP180: primary structure, domain organization and identification of a clathrin binding site. *EMBO J.* 12: 667-675.
6. Ball, C.L., et al. 1995. Expression and localization of α -Adaptin isoforms. *J. Cell Sci.* 108: 2865-2875.
7. Mellman, I. 1996. Endocytosis and molecular sorting. *Annu. Rev. Cell Dev. Biol.* 12: 575-625.
8. Dreyling, M.H., et al. 1996. The t(10;11) (p13;q14) in the U937 cell line results in the fusion of the AF10 gene and CALM, encoding a new member of the AP-3 clathrin assembly protein family. *Proc. Natl. Acad. Sci. USA* 93: 4804-4809.

CHROMOSOMAL LOCATION

Genetic locus: *Picalm* (mouse) mapping to 7 E1.

PRODUCT

CALM (m): 293T Lysate represents a lysate of mouse CALM transfected 293T cells and is provided as 100 μ g protein in 200 μ l SDS-PAGE buffer.

STORAGE

Store at -20° C. Repeated freezing and thawing should be minimized. Sample vial should be boiled once prior to use. Non-hazardous. No MSDS required.

APPLICATIONS

CALM (m): 293T Lysate is suitable as a Western Blotting positive control for mouse reactive CALM antibodies. Recommended use: 10-20 μ l per lane.

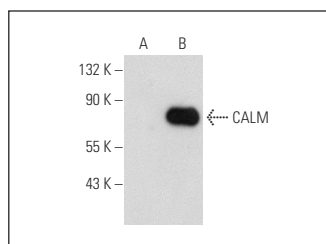
Control 293T Lysate: sc-117752 is available as a Western Blotting negative control lysate derived from non-transfected 293T cells.

CALM (D-8): sc-166522 is recommended as a positive control antibody for Western Blot analysis of enhanced mouse CALM expression in CALM transfected 293T cells (starting dilution 1:100, dilution range 1:100-1:1,000).

RECOMMENDED SUPPORT REAGENTS

To ensure optimal results, the following support reagents are recommended:
 1) Western Blotting: use m-IgG κ BP-HRP: sc-516102 or m-IgG κ BP-HRP (Cruz Marker): sc-516102-CM (dilution range: 1:1000-1:10000), Cruz Marker™ Molecular Weight Standards: sc-2035, UltraCruz® Blocking Reagent: sc-516214 and Western Blotting Luminol Reagent: sc-2048.

DATA



CALM (D-8): sc-166522. Western blot analysis of CALM expression in non-transfected: sc-117752 (A) and mouse CALM transfected: sc-126567 (B) 293T whole cell lysates.

RESEARCH USE

For research use only, not for use in diagnostic procedures.

PROTOCOLS

See our web site at www.scbt.com for detailed protocols and support products.