



SZABO SCANDIC

Part of Europa Biosite

Produktinformation



Forschungsprodukte & Biochemikalien



Zellkultur & Verbrauchsmaterial



Diagnostik & molekulare Diagnostik



Laborgeräte & Service

Weitere Information auf den folgenden Seiten!
See the following pages for more information!



Lieferung & Zahlungsart

siehe unsere [Liefer- und Versandbedingungen](#)

Zuschläge

- Mindermengenzuschlag
- Trockeneiszuschlag
- Gefahrgutzuschlag
- Expressversand

SZABO-SCANDIC HandelsgmbH

Quellenstraße 110, A-1100 Wien

T. +43(0)1 489 3961-0

F. +43(0)1 489 3961-7

mail@szabo-scandic.com

www.szabo-scandic.com

[linkedin.com/company/szaboscandic](https://www.linkedin.com/company/szaboscandic) 

COPB (m): 293T Lysate: sc-126656

BACKGROUND

Membrane and vesicular trafficking in the early secretory pathway are mediated by non-Clathrin COP (coat protein) I-coated vesicles. COPB (β -COP) is a marker protein for pre-Golgi intermediates (vesicular tubular clusters, VTCs). GIV (gais interacting protein) co-localizes with COPB and $G_{\alpha 13}$ on vesicles found in close proximity to ER exit sites and to *cis* Golgi cisternae. Afadin DIL domain-interacting protein (ADIP) co-localizes with COPP (β' -COP) at the Golgi complex in Madin Darby canine kidney and normal rat kidney cells. Non-Clathrin-coated vesicles mediate membrane traffic through the Golgi complex. COPB is a major component of the coat of non-Clathrin-coated vesicles.

REFERENCES

- Duden, R., Allan, V. and Kreis, T. 1991. Involvement of β -COP in membrane traffic through the Golgi complex. *Trends Cell Biol.* 1: 14-19.
- Lowe, M. and Kreis, T.E. 1995. In vitro assembly and disassembly of coatomer. *J. Biol. Chem.* 270: 31364-31371.
- Harter, C. and Wieland, F.T. 1998. A single binding site for dilysine retrieval motifs and p23 within the γ subunit of coatomer. *Proc. Natl. Acad. Sci. USA* 95: 11649-11654.
- Tisdale, E.J., Wang, J., Silver, R.B. and Artalejo, C.R. 2003. Atypical protein kinase C plays a critical role in protein transport from pre-Golgi intermediates. *J. Biol. Chem.* 278: 38015-38021.
- Cohen, M., Stutz, F. and Dargemont, C. 2003. Deubiquitination, a new player in Golgi to endoplasmic reticulum retrograde transport. *J. Biol. Chem.* 278: 51989-51992.
- Asada, M., Irie, K., Yamada, A. and Takai, Y. 2004. Afadin- and α -actinin-binding protein ADIP directly binds β' -COP, a subunit of the coatomer complex. *Biochem. Biophys. Res. Commun.* 321: 350-354.
- Rybakin, V., Stumpf, M., Schulze, A., Majoul, I.V., Noegel, A.A. and Hasse, A. 2004. Coronin 7, the mammalian POD-1 homologue, localizes to the Golgi apparatus. *FEBS Lett.* 573: 161-167.
- Le-Niculescu, H., Niesman, I., Fischer, T., DeVries, L. and Farquhar, M.G. 2005. Identification and characterization of GIV, a novel $G_{\alpha i/s}$ -interacting protein found on COPI, endoplasmic reticulum-Golgi transport vesicles. *J. Biol. Chem.* 280: 22012-22020.
- SWISS-PROT/TrEMBL (P48444). World Wide Web URL: <http://www.expasy.ch/sprot/sprot-top.html>.

CHROMOSOMAL LOCATION

Genetic locus: Copb1 (mouse) mapping to 7 F1.

PRODUCT

COPB (m): 293T Lysate represents a lysate of mouse COPB transfected 293T cells and is provided as 100 μ g protein in 200 μ l SDS-PAGE buffer.

STORAGE

Store at -20 $^{\circ}$ C. Repeated freezing and thawing should be minimized. Sample vial should be boiled once prior to use. Non-hazardous. No MSDS required.

APPLICATIONS

COPB (m): 293T Lysate is suitable as a Western Blotting positive control for mouse reactive COPB antibodies. Recommended use: 10-20 μ l per lane.

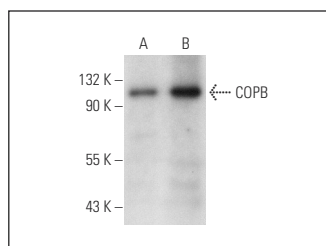
Control 293T Lysate: sc-117752 is available as a Western Blotting negative control lysate derived from non-transfected 293T cells.

COPB (C-11): sc-137226 is recommended as a positive control antibody for Western Blot analysis of enhanced mouse COPB expression in COPB transfected 293T cells (starting dilution 1:100, dilution range 1:100-1:1,000).

RECOMMENDED SUPPORT REAGENTS

To ensure optimal results, the following support reagents are recommended:
 1) Western Blotting: use m-IgG κ BP-HRP: sc-516102 or m-IgG κ BP-HRP (Cruz Marker): sc-516102-CM (dilution range: 1:1000-1:10000), Cruz MarkerTM Molecular Weight Standards: sc-2035, UltraCruz[®] Blocking Reagent: sc-516214 and Western Blotting Luminol Reagent: sc-2048.

DATA



COPB (C-11): sc-137226. Western blot analysis of COPB expression in non-transfected: sc-117752 (A) and mouse COPB transfected: sc-126656 (B) 293T whole cell lysates.

RESEARCH USE

For research use only, not for use in diagnostic procedures.

PROTOCOLS

See our web site at www.scbt.com for detailed protocols and support products.