



SZABO SCANDIC

Part of Europa Biosite

Produktinformation



Forschungsprodukte & Biochemikalien



Zellkultur & Verbrauchsmaterial



Diagnostik & molekulare Diagnostik



Laborgeräte & Service

Weitere Information auf den folgenden Seiten!
See the following pages for more information!



Lieferung & Zahlungsart

siehe unsere [Liefer- und Versandbedingungen](#)

Zuschläge

- Mindermengenzuschlag
- Trockeneiszuschlag
- Gefahrgutzuschlag
- Expressversand

SZABO-SCANDIC HandelsgmbH

Quellenstraße 110, A-1100 Wien

T. +43(0)1 489 3961-0

F. +43(0)1 489 3961-7

mail@szabo-scandic.com

www.szabo-scandic.com

[linkedin.com/company/szaboscandic](https://www.linkedin.com/company/szaboscandic) 

CRP2BP (m): 293T Lysate: sc-126668

BACKGROUND

CRP2BP (cysteine-rich protein 2-binding protein, CSRP2-binding protein) is a 782 amino acid member of the cysteine- and glycine-rich protein family (CRP1, CRP2 and CRP3), which contain 2 zinc-binding LIM domains, LIM1 (amino-terminal) and LIM2 (carboxyl-terminal). This group is implicated in diverse cellular processes linked to differentiation, growth control and pathogenesis. The LIM domain is a conserved cysteine and histidine-containing structural module of two tandemly arranged zinc fingers. It has been identified in single or multiple copies in a variety of regulatory proteins. CRP2BP specifically interacts with the double LIM domain protein CRP2. Although present in cytoplasm, CRP2BP is mainly a nuclear protein, with highest expression in skeletal muscle and heart.

REFERENCES

- Okano, I., Yamamoto, T., Kaji, A., Kimura, T., Mizuno, K. and Nakamura, T. 1993. Cloning of CRP2, a novel member of the cysteine-rich protein family with two repeats of an unusual LIM/double zinc-finger motif. *FEBS Lett.* 333: 51-55.
- Karim, M.A., Ohta, K., Egashira, M., Jinno, Y., Niikawa, N., Matsuda, I. and Indo, Y. 1997. Human ESP1/CRP2, a member of the LIM domain protein family: characterization of the cDNA and assignment of the gene locus to chromosome 14q32.3. *Genomics* 31: 167-176.
- Konrat, R., Kräutler, B., Weiskirchen, R. and Bister, K. 1998. Structure of cysteine- and glycine-rich protein CRP2. Backbone dynamics reveal motional freedom and independent spatial orientation of the lim domains. *J. Biol. Chem.* 273: 23233-23240.
- Kloiber, K., Weiskirchen, R., Kräutler, B., Bister, K. and Konrat, R. 1999. Mutational analysis and NMR spectroscopy of quail cysteine and glycine-rich protein CRP2 reveal an intrinsic segmental flexibility of LIM domains. *J. Mol. Biol.* 292: 893-908.
- Weiskirchen, R. and Gressner, A.M. 2000. The cysteine- and glycine-rich LIM domain protein CRP2 specifically interacts with a novel human protein (CRP2BP). *Biochem. Biophys. Res. Commun.* 274: 655-663.
- Weiskirchen, R., Moser, M., Weiskirchen, S., Erdel, M., Dahmen, S., Buettner, R. and Gressner, A.M. 2001. LIM-domain protein cysteine- and glycine-rich protein 2 (CRP2) is a novel marker of hepatic stellate cells and binding partner of the protein inhibitor of activated Stat1. *Biochem. J.* 359: 485-496.

CHROMOSOMAL LOCATION

Genetic locus: *Csrp2bp* (mouse) mapping to 2 G1.

PRODUCT

CRP2BP (m): 293T Lysate represents a lysate of mouse CRP2BP transfected 293T cells and is provided as 100 µg protein in 200 µl SDS-PAGE buffer.

STORAGE

Store at -20° C. Repeated freezing and thawing should be minimized. Sample vial should be boiled once prior to use. Non-hazardous. No MSDS required.

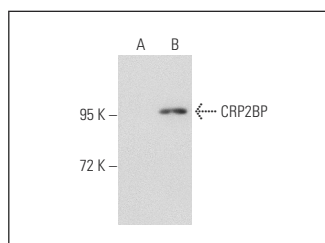
APPLICATIONS

CRP2BP (m): 293T Lysate is suitable as a Western Blotting positive control for mouse reactive CRP2BP antibodies. Recommended use: 10-20 µl per lane.

Control 293T Lysate: sc-117752 is available as a Western Blotting negative control lysate derived from non-transfected 293T cells.

CRP2BP (2221C4a): sc-81072 is recommended as a positive control antibody for Western Blot analysis of enhanced mouse CRP2BP expression in CRP2BP transfected 293T cells (starting dilution 1:100, dilution range 1:100-1:1,000).

DATA



CRP2BP (2221C4a): sc-81072. Western blot analysis of CRP2BP expression in non-transfected: sc-117752 (A) and mouse CRP2BP transfected: sc-126668 (B) 293T whole cell lysates.

RESEARCH USE

For research use only, not for use in diagnostic procedures.

PROTOCOLS

See our web site at www.scbt.com for detailed protocols and support products.