



SZABO SCANDIC

Part of Europa Biosite

Produktinformation



Forschungsprodukte & Biochemikalien



Zellkultur & Verbrauchsmaterial



Diagnostik & molekulare Diagnostik



Laborgeräte & Service

Weitere Information auf den folgenden Seiten!
See the following pages for more information!



Lieferung & Zahlungsart

siehe unsere [Liefer- und Versandbedingungen](#)

Zuschläge

- Mindermengenzuschlag
- Trockeneiszuschlag
- Gefahrgutzuschlag
- Expressversand

SZABO-SCANDIC HandelsgmbH

Quellenstraße 110, A-1100 Wien

T. +43(0)1 489 3961-0

F. +43(0)1 489 3961-7

mail@szabo-scandic.com

www.szabo-scandic.com

[linkedin.com/company/szaboscandic](https://www.linkedin.com/company/szaboscandic) 

EHD2 (m): 293T Lysate: sc-126768

BACKGROUND

Eps15 homology domain (EHD)-containing proteins function in the exit of receptors and other membrane proteins from the endosomal recycling compartment. EHD2 (EH-domain containing 2), also known as PAST2, is a 543 amino acid protein that contains one EF-hand domain and one EH domain. Expressed at high levels in heart and at lower levels in lung, placenta and skeletal muscle, EHD2 interacts with various proteins such as the glucose transporter Glut4 and the endocytotic-associated protein EHBP1. When EHD2 associates with Insulin-induced Glut4, it can recruit Glut4 to the plasma membrane, thereby allowing Glut4 to bind glucose and regulate blood sugar levels. Additionally, EHD2 interacts with EHBP1 and is thought to link EHBP1-associated endocytotic events with actin cytoskeleton dynamics. Through its interactions with these two proteins, EHD2 is involved in both maintaining blood glucose levels and mediating actin-associated endocytosis.

REFERENCES

- Pohl, U., Smith, J.S., Tachibana, I., Ueki, K., Lee, H.K., Ramaswamy, S., Wu, Q., Mohrenweiser, H.W., Jenkins, R.B. and Louis, D.N. 2000. EHD2, EHD3, and EHD4 encode novel members of a highly conserved family of EH domain-containing proteins. *Genomics* 63: 255-262.
- Park, S.Y., Ha, B.G., Choi, G.H., Ryu, J., Kim, B., Jung, C.Y. and Lee, W. 2004. EHD2 interacts with the Insulin-responsive glucose transporter (GLUT4) in rat adipocytes and may participate in Insulin-induced GLUT4 recruitment. *Biochemistry* 43: 7552-7562.
- Guilherme, A., Soriano, N.A., Bose, S., Holik, J., Bose, A., Pomerleau, D.P., Furcinitti, P., Leszyk, J., Corvera, S. and Czech, M.P. 2004. EHD2 and the novel EH domain binding protein EHBP1 couple endocytosis to the actin cytoskeleton. *J. Biol. Chem.* 279: 10593-10605.
- Naslavsky, N. and Caplan, S. 2005. C-terminal EH-domain-containing proteins: consensus for a role in endocytic trafficking, EH? *J. Cell Sci.* 118: 4093-4101.
- Braun, A., Pinyol, R., Dahlhaus, R., Koch, D., Fonarev, P., Grant, B.D., Kessels, M.M. and Qualmann, B. 2005. EHD proteins associate with syndapin I and II and such interactions play a crucial role in endosomal recycling. *Mol. Biol. Cell* 16: 3642-3658.
- Daumke, O., Lundmark, R., Vallis, Y., Martens, S., Butler, P.J. and McMahon, H.T. 2007. Architectural and mechanistic insights into an EHD ATPase involved in membrane remodelling. *Nature* 449: 923-927.
- George, M., Ying, G., Rainey, M.A., Solomon, A., Parikh, P.T., Gao, Q., Band, V. and Band, H. 2007. Shared as well as distinct roles of EHD proteins revealed by biochemical and functional comparisons in mammalian cells and *C. elegans*. *BMC Cell Biol.* 8: 3.

CHROMOSOMAL LOCATION

Genetic locus: Ehd2 (mouse) mapping to 7 A2.

PRODUCT

EHD2 (m): 293T Lysate represents a lysate of mouse EHD2 transfected 293T cells and is provided as 100 µg protein in 200 µl SDS-PAGE buffer.

APPLICATIONS

EHD2 (m): 293T Lysate is suitable as a Western Blotting positive control for mouse reactive EHD2 antibodies. Recommended use: 10-20 µl per lane.

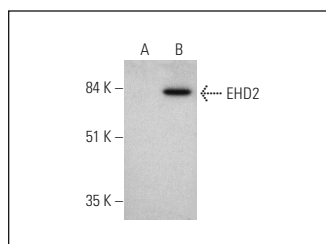
Control 293T Lysate: sc-117752 is available as a Western Blotting negative control lysate derived from non-transfected 293T cells.

EHD2 (G-3): sc-390584 is recommended as a positive control antibody for Western Blot analysis of enhanced mouse EHD2 expression in EHD2 transfected 293T cells (starting dilution 1:100, dilution range 1:100-1:1,000).

RECOMMENDED SUPPORT REAGENTS

To ensure optimal results, the following support reagents are recommended:
 1) Western Blotting: use m-IgGκ BP-HRP: sc-516102 or m-IgGκ BP-HRP (Cruz Marker): sc-516102-CM (dilution range: 1:1000-1:10000), Cruz Marker™ Molecular Weight Standards: sc-2035, UltraCruz® Blocking Reagent: sc-516214 and Western Blotting Luminol Reagent: sc-2048.

DATA



EHD2 (G-3): sc-390584. Western blot analysis of EHD2 expression in non-transfected: sc-117752 (A) and mouse EHD2 transfected: sc-126768 (B) 293T whole cell lysates.

STORAGE

Store at -20° C. Repeated freezing and thawing should be minimized. Sample vial should be boiled once prior to use. Non-hazardous. No MSDS required.

RESEARCH USE

For research use only, not for use in diagnostic procedures.

PROTOCOLS

See our web site at www.scbt.com for detailed protocols and support products.