



# SZABO SCANDIC

Part of Europa Biosite

## Produktinformation



Forschungsprodukte & Biochemikalien



Zellkultur & Verbrauchsmaterial



Diagnostik & molekulare Diagnostik



Laborgeräte & Service

Weitere Information auf den folgenden Seiten!  
See the following pages for more information!



### Lieferung & Zahlungsart

siehe unsere [Liefer- und Versandbedingungen](#)

### Zuschläge

- Mindermengenzuschlag
- Trockeneiszuschlag
- Gefahrgutzuschlag
- Expressversand

### SZABO-SCANDIC HandelsgmbH

Quellenstraße 110, A-1100 Wien

T. +43(0)1 489 3961-0

F. +43(0)1 489 3961-7

[mail@szabo-scandic.com](mailto:mail@szabo-scandic.com)

[www.szabo-scandic.com](http://www.szabo-scandic.com)

[linkedin.com/company/szaboscandic](https://www.linkedin.com/company/szaboscandic) 

# Fibrillarin (m): 293T Lysate: sc-126852

## BACKGROUND

Fibrillarin is a widely occurring, basic, non-histone protein that is localized exclusively in the fibrillar region of the nucleolus, including both the dense fibrillar and the fibrillar center regions. Fibrillarin is also expressed in HeLa cells, 3T3 cells and human peripheral blood lymphocytes. In metaphase and anaphase, Fibrillarin is found on putative chromosomal nucleolar regions (NORs). During telophase, Fibrillarin is an early marker for the site of the newly forming nucleolus. The structure of Fibrillarin includes an RNA-binding domain and an RNP consensus sequence, which is consistent with the association of Fibrillarin with the U3 small nucleolar RNA. Fibrillarin is involved in processing rRNA transcripts in the nucleolus.

## REFERENCES

- Ochs, R.L., Lischwe, M.A., Spohn, W.H. and Busch, H. 1985. Fibrillarin: a new protein of the nucleolus identified by autoimmune sera. *Biol. Cell* 54: 123-133.
- Aris, J.P. and Blobel, G. 1991. cDNA cloning and sequencing of human Fibrillarin, a conserved nucleolar protein recognized by autoimmune anti-sera. *Proc. Natl. Acad. Sci. USA* 88: 931-935.
- Jansen, R.P., Hurt, E.C., Kern, H., Lehtonen, H., Carmo-Fonseca, M., Lapeyre, B. and Tollervey, D. 1991. Evolutionary conservation of the human nucleolar protein Fibrillarin and its functional expression in yeast. *J. Cell Biol.* 113: 715-729.
- Scheer, U. and Hock, R. 1999. Structure and function of the nucleolus. *Curr. Opin. Cell Biol.* 11: 385-390.
- Olson, M.O.J., Dundre, M. and Szebeni, A. 2000. The nucleolus: an old factory with unexpected capabilities. *Trends Cell Biol.* 10: 189-196.
- Phair, R.D. and Mistell, T. 2000. High mobility of proteins in the mammalian cell nucleus. *Nature* 404: 604-609.
- Newton, K., Petfalski, E., Tollervey, D. and Caceres, J.F. 2003. Fibrillarin is essential for early development and required for accumulation of an intron-encoded small nucleolar RNA in the mouse. *Mol. Cell. Biol.* 23: 8519-8527.
- Deng, L., Starostina, N.G., Liu, Z.J., Rose, J.P., Terns, R.M., Terns, M.P., Wang, B.C. 2004. Structure determination of Fibrillarin from the hyperthermophilic archaeon *Pyrococcus furiosus*. *Biochem. Biophys. Res. Commun.* 315: 726-732.

## CHROMOSOMAL LOCATION

Genetic locus: Fbl (mouse) mapping to 7 A3.

## PRODUCT

Fibrillarin (m): 293T Lysate represents a lysate of mouse Fibrillarin transfected 293T cells and is provided as 100 µg protein in 200 µl SDS-PAGE buffer.

## STORAGE

Store at -20° C. Repeated freezing and thawing should be minimized. Sample vial should be boiled once prior to use. Non-hazardous. No MSDS required.

## APPLICATIONS

Fibrillarin (m): 293T Lysate is suitable as a Western Blotting positive control for mouse reactive Fibrillarin antibodies. Recommended use: 10-20 µl per lane.

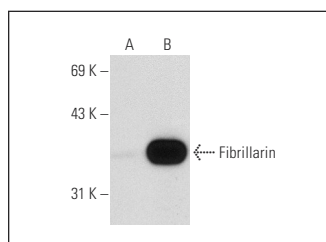
Control 293T Lysate: sc-117752 is available as a Western Blotting negative control lysate derived from non-transfected 293T cells.

Fibrillarin (F-6): sc-166000 is recommended as a positive control antibody for Western Blot analysis of enhanced mouse Fibrillarin expression in Fibrillarin transfected 293T cells (starting dilution 1:100, dilution range 1:100-1:1,000).

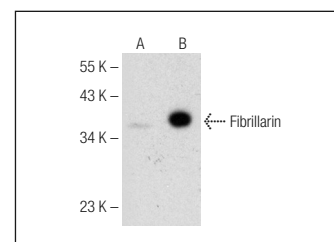
## RECOMMENDED SUPPORT REAGENTS

To ensure optimal results, the following support reagents are recommended:  
1) Western Blotting: use m-IgGκ BP-HRP: sc-516102 or m-IgGκ BP-HRP (Cruz Marker): sc-516102-CM (dilution range: 1:1000-1:10000), Cruz Marker™ Molecular Weight Standards: sc-2035, UltraCruz® Blocking Reagent: sc-516214 and Western Blotting Luminol Reagent: sc-2048.

## DATA



Fibrillarin (F-6): sc-166000. Western blot analysis of Fibrillarin expression in non-transfected: sc-117752 (A) and mouse Fibrillarin transfected: sc-126852 (B) 293T whole cell lysates.



Fibrillarin (G-8): sc-374022. Western blot analysis of Fibrillarin expression in non-transfected: sc-117752 (A) and mouse Fibrillarin transfected: sc-126852 (B) 293T whole cell lysates.

## RESEARCH USE

For research use only, not for use in diagnostic procedures.

## PROTOCOLS

See our web site at [www.scbt.com](http://www.scbt.com) for detailed protocols and support products.