



SZABO SCANDIC

Part of Europa Biosite

Produktinformation



Forschungsprodukte & Biochemikalien



Zellkultur & Verbrauchsmaterial



Diagnostik & molekulare Diagnostik



Laborgeräte & Service

Weitere Information auf den folgenden Seiten!
See the following pages for more information!



Lieferung & Zahlungsart

siehe unsere [Liefer- und Versandbedingungen](#)

Zuschläge

- Mindermengenzuschlag
- Trockeneiszuschlag
- Gefahrgutzuschlag
- Expressversand

SZABO-SCANDIC HandelsgmbH

Quellenstraße 110, A-1100 Wien

T. +43(0)1 489 3961-0

F. +43(0)1 489 3961-7

mail@szabo-scandic.com

www.szabo-scandic.com

[linkedin.com/company/szaboscandic](https://www.linkedin.com/company/szaboscandic) 

La/SSB (m): 293T Lysate: sc-127079

BACKGROUND

Ro autoantigens are of clinical significance because antibodies directed against them are found in most patients with primary Sjogren syndrome, sub-acute cutaneous lupus erythematosus (SLE), neonatal lupus erythematosus, ANA-negative lupus erythematosus and systemic lupus erythematosus-like disease secondary to homozygous C2 or C4 complement deficiency. Ro/SSA is a ribonucleoprotein that binds to autoantibodies in 35 to 50% of patients with SLE and in up to 97% of patients with Sjogren syndrome. The Ro/SSA particle consists of a single immunoreactive protein noncovalently bound with one of four small RNA molecules. Most anti-Ro/SSA-positive sera have antibodies not only against the immunoreactive protein, but also against an Ro/SSA protein. La/SSB is an autoimmune RNA-binding protein that plays a role in the transcription of RNA polymerase III was originally defined by its reactivity with autoantibodies from patients with Sjogren syndrome and SLE.

REFERENCES

- Chambers, J.C., Kenan, D., Martin, B.J. and Keene, J.D. 1988. Genomic structure and amino acid sequence domains of the human La autoantigen. *J. Biol. Chem.* 263: 18043-18051.
- Itoh, K., Itoh, Y. and Frank, M.B. 1991. Protein heterogeneity in the human Ro/SSA ribonucleoproteins. The 52- and 60 kDa Ro/SSA autoantigens are encoded by separate genes. *J. Clin. Invest.* 87: 177-186.
- Frank, M.B., Itoh, K., Fujisaku, A., Pontarotti, P., Mattei, M.G. and Neas, B.R. 1993. The mapping of the human 52 kDa Ro/SSA autoantigen gene to human chromosome 11, and its polymorphisms. *Am. J. Hum. Genet.* 52: 183-191.
- Chan, E.K., Tan, E.M., Ward, D.C. and Matera, A.G. 1994. Human 60 kDa SSA/Ro ribonucleoprotein autoantigen gene (SSA2) localized to 1q31 by fluorescence *in situ* hybridization. *Genomics* 23: 298-300.
- LocusLink Report (LocusID: 600063). <http://www.ncbi.nlm.nih.gov/LocusLink>

CHROMOSOMAL LOCATION

Genetic locus: SSB (human) mapping to 2q31.1.

PRODUCT

La/SSB (m): 293T Lysate represents a lysate of mouse La/SSB transfected 293T cells and is provided as 100 µg protein in 200 µl SDS-PAGE buffer.

RESEARCH USE

For research use only, not for use in diagnostic procedures.

APPLICATIONS

La/SSB (m): 293T Lysate is suitable as a Western Blotting positive control for mouse reactive La/SSB antibodies. Recommended use: 10-20 µl per lane.

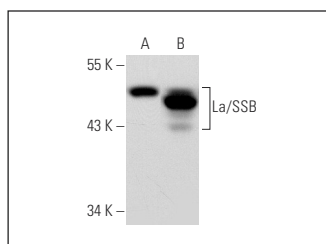
Control 293T Lysate: sc-117752 is available as a Western Blotting negative control lysate derived from non-transfected 293T cells.

La/SSB (312B): sc-80656 is recommended as a positive control antibody for Western Blot analysis of enhanced mouse La/SSB expression in La/SSB transfected 293T cells (starting dilution 1:100, dilution range 1:100-1:1,000).

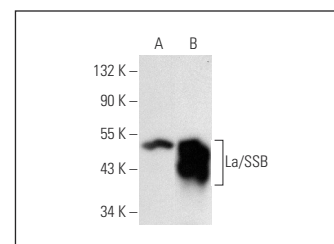
RECOMMENDED SUPPORT REAGENTS

To ensure optimal results, the following support reagents are recommended:
1) Western Blotting: use m-IgGκ BP-HRP: sc-516102 or m-IgGκ BP-HRP (Cruz Marker): sc-516102-CM (dilution range: 1:1000-1:10000), Cruz Marker™ Molecular Weight Standards: sc-2035, UltraCruz® Blocking Reagent: sc-516214 and Western Blotting Luminol Reagent: sc-2048.

DATA



La/SSB (312B): sc-80656. Western blot analysis of La/SSB expression in non-transfected: sc-117752 (A) and mouse La/SSB transfected: sc-127079 (B) 293T whole cell lysates.



La/SSB (B-8): sc-166274. Western blot analysis of La/SSB expression in non-transfected: sc-117752 (A) and mouse La/SSB transfected: sc-127079 (B) 293T whole cell lysates.

STORAGE

Store at -20° C. Repeated freezing and thawing should be minimized. Sample vial should be boiled once prior to use. Non-hazardous. No MSDS required.

PROTOCOLS

See our web site at www.scbt.com for detailed protocols and support products.