



# SZABO SCANDIC

Part of Europa Biosite

## Produktinformation



Forschungsprodukte & Biochemikalien



Zellkultur & Verbrauchsmaterial



Diagnostik & molekulare Diagnostik



Laborgeräte & Service

Weitere Information auf den folgenden Seiten!  
See the following pages for more information!



### Lieferung & Zahlungsart

siehe unsere [Liefer- und Versandbedingungen](#)

### Zuschläge

- Mindermengenzuschlag
- Trockeneiszuschlag
- Gefahrgutzuschlag
- Expressversand

### SZABO-SCANDIC HandelsgmbH

Quellenstraße 110, A-1100 Wien

T. +43(0)1 489 3961-0

F. +43(0)1 489 3961-7

[mail@szabo-scandic.com](mailto:mail@szabo-scandic.com)

[www.szabo-scandic.com](http://www.szabo-scandic.com)

[linkedin.com/company/szaboscandic](https://www.linkedin.com/company/szaboscandic) 

# PRC1 (m): 293T Lysate: sc-127378

## BACKGROUND

Sequential activation and inactivation of Cdk/cyclin complexes regulates the cell cycle. PRC1 (for protein regulating cytokinesis 1) has been identified as a substrate for several Cdks, including Cdc2 and Cdk2. PRC1 binds to the mid-zone of mitotic spindles during anaphase and is localized to the cell midbody during cytokinesis. Depletion of PRC1 has been shown to prevent cellular cleavage, but it has no effect on nuclear division, demonstrating the importance of PRC1 in mitosis. The yeast homolog of PRC1, Ase1, is essential for spindle assembly, elongation and disassembly during mitosis. Ase1 has been shown to undergo degradation mediated by the APC (anaphase-promoting complex) upon entry into G<sub>1</sub> phase.

## REFERENCES

- Sherr, C.J. 1994. G<sub>1</sub> phase progression: cycling on cue. *Cell* 79: 551-555.
- Heichman, K.A. and Roberts, J.M. 1994. Rules to replicate by. *Cell* 79: 557-562.
- King, R.W., Jackson, P.K. and Kirschner, M.W. 1994. Mitosis in transition. *Cell* 79: 563-571.
- Pellman, D., Bagget, M., Tu, H. and Fink, G.R. 1995. Two microtubule-associated proteins required for anaphase spindle movement in *Saccharomyces cerevisiae*. *J. Cell Biol.* 130: 1373-1385.
- Juang, Y.L., Huang, J., Peters, J.M., McLaughlin, M.E., Tai, C.Y. and Pellman, D. 1997. APC-mediated proteolysis of Ase1 and the morphogenesis of the mitotic spindle. *Science* 275: 1311-1314.
- Jiang, W., Jimenez, G., Wells, N.J., Hope, T.J., Wahl, G.M., Hunter, T. and Fukunaga, R. 1998. PRC1: a human mitotic spindle-associated Cdk substrate protein required for cytokinesis. *Mol. Cell* 2: 877-885.
- Mollinari, C., Kleman, J.P., Jiang, W., Schoehn, G., Hunter, T. and Margolis, R.L. 2002. PRC1 is a microtubule binding and bundling protein essential to maintain the mitotic spindle midzone. *J. Cell Biol.* 157: 1175-1186.
- Vogel, T., Stoykova, A. and Gruss, P. 2006. Differential expression of polycomb repression complex 1 (PRC1) members in the developing mouse brain reveals multiple complexes. *Dev. Dyn.* 235: 2574-2585.

## CHROMOSOMAL LOCATION

Genetic locus: Prc1 (mouse) mapping to 7 D3.

## PRODUCT

PRC1 (m): 293T Lysate represents a lysate of mouse PRC1 transfected 293T cells and is provided as 100 µg protein in 200 µl SDS-PAGE buffer.

## STORAGE

Store at -20° C. Repeated freezing and thawing should be minimized. Sample vial should be boiled once prior to use. Non-hazardous. No MSDS required.

## PROTOCOLS

See our web site at [www.scbt.com](http://www.scbt.com) for detailed protocols and support products.

## APPLICATIONS

PRC1 (m): 293T Lysate is suitable as a Western Blotting positive control for mouse reactive PRC1 antibodies. Recommended use: 10-20 µl per lane.

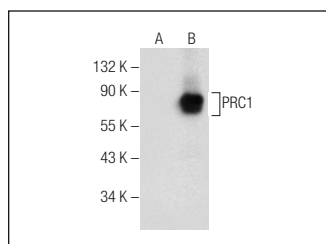
Control 293T Lysate: sc-117752 is available as a Western Blotting negative control lysate derived from non-transfected 293T cells.

PRC1 (C-1): sc-376983 is recommended as a positive control antibody for Western Blot analysis of enhanced mouse PRC1 expression in PRC1 transfected 293T cells (starting dilution 1:100, dilution range 1:100-1:1,000).

## RECOMMENDED SUPPORT REAGENTS

To ensure optimal results, the following support reagents are recommended:  
 1) Western Blotting: use m-IgGκ BP-HRP: sc-516102 or m-IgGκ BP-HRP (Cruz Marker): sc-516102-CM (dilution range: 1:1000-1:10000), Cruz Marker™ Molecular Weight Standards: sc-2035, UltraCruz® Blocking Reagent: sc-516214 and Western Blotting Luminol Reagent: sc-2048.

## DATA



PRC1 (C-1): sc-376983. Western blot analysis of PRC1 expression in non-transfected: sc-117752 (A) and mouse PRC1 transfected: sc-127378 (B) 293T whole cell lysates.

## RESEARCH USE

For research use only, not for use in diagnostic procedures.