



SZABO SCANDIC

Part of Europa Biosite

Produktinformation



Forschungsprodukte & Biochemikalien



Zellkultur & Verbrauchsmaterial



Diagnostik & molekulare Diagnostik



Laborgeräte & Service

Weitere Information auf den folgenden Seiten!
See the following pages for more information!



Lieferung & Zahlungsart

siehe unsere [Liefer- und Versandbedingungen](#)

Zuschläge

- Mindermengenzuschlag
- Trockeneiszuschlag
- Gefahrgutzuschlag
- Expressversand

SZABO-SCANDIC HandelsgmbH

Quellenstraße 110, A-1100 Wien

T. +43(0)1 489 3961-0

F. +43(0)1 489 3961-7

mail@szabo-scandic.com

www.szabo-scandic.com

[linkedin.com/company/szaboscandic](https://www.linkedin.com/company/szaboscandic) 

Taspase 1 (m2): 293T Lysate: sc-127633

BACKGROUND

Taspase 1, also known as TASP1 or C20orf13, is a 420 amino acid endopeptidase which cleaves specific substrates following aspartate residues and is required for MLL (myeloid/lymphoid or mixed-lineage leukemia) processing and, ultimately, correct expression of the HoxA gene cluster. After translation, Taspase 1 is subject to autoproteolytic processing which results in the creation of two subunits, designated α and β , which reassemble into a multimeric structure and are required for proper Taspase 1 activity. The gene encoding Taspase 1 maps to human chromosome 20. Comprising approximately 2% of the human genome, chromosome 20 contains nearly 63 million bases that encode over 600 genes, some of which are associated with Creutzfeldt-Jakob disease, amyotrophic lateral sclerosis, spinal muscular atrophy, ring chromosome 20 epilepsy syndrome and Alagille syndrome.

REFERENCES

1. Hsieh, J.J., Cheng, E.H. and Korsmeyer, S.J. 2003. Taspase 1: a threonine aspartase required for cleavage of MLL and proper Hox gene expression. *Cell* 115: 293-303.
2. Hsieh, J.J., Ernst, P., Erdjument-Bromage, H., Tempst, P. and Korsmeyer, S.J. 2003. Proteolytic cleavage of MLL generates a complex of N- and C-terminal fragments that confers protein stability and subnuclear localization. *Mol. Cell. Biol.* 23: 186-194.
3. Popovic, R. and Zeleznik-Le, N.J. 2005. MLL: how complex does it get? *J. Cell. Biochem.* 95: 234-242.
4. Khan, J.A., Dunn, B.M. and Tong, L. 2005. Crystal structure of human Taspase 1, a crucial protease regulating the function of MLL. *Structure* 13: 1443-1452.
5. Zhou, H., Spicuglia, S., Hsieh, J.J., Mitsiou, D.J., Hoiby, T., Veenstra, G.J., Korsmeyer, S.J. and Stunnenberg, H.G. 2006. Uncleaved TFIIA is a substrate for Taspase 1 and active in transcription. *Mol. Cell. Biol.* 26: 2728-2735.
6. Online Mendelian Inheritance in Man, OMIM™. 2006. Johns Hopkins University, Baltimore, MD. MIM Number: 608270. World Wide Web URL: <http://www.ncbi.nlm.nih.gov/omim/>
7. Niehof, M. and Borlak, J. 2008. EPS15R, TASP1, and PRPF3 are novel disease candidate genes targeted by HNF4 α splice variants in hepatocellular carcinomas. *Gastroenterology* 134: 1191-1202.

CHROMOSOMAL LOCATION

Genetic locus: Tasp1 (mouse) mapping to 2 F3.

PRODUCT

Taspase 1 (m2): 293T Lysate represents a lysate of mouse Taspase 1 transfected 293T cells and is provided as 100 μ g protein in 200 μ l SDS-PAGE buffer.

STORAGE

Store at -20° C. Repeated freezing and thawing should be minimized. Sample vial should be boiled once prior to use. Non-hazardous. No MSDS required.

APPLICATIONS

Taspase 1 (m2): 293T Lysate is suitable as a Western Blotting positive control for mouse reactive Taspase 1 antibodies. Recommended use: 10-20 μ l per lane.

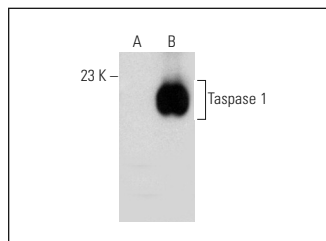
Control 293T Lysate: sc-117752 is available as a Western Blotting negative control lysate derived from non-transfected 293T cells.

Taspase 1 (F-7): sc-514676 is recommended as a positive control antibody for Western Blot analysis of enhanced mouse Taspase 1 expression in Taspase 1 transfected 293T cells (starting dilution 1:100, dilution range 1:100-1:1,000).

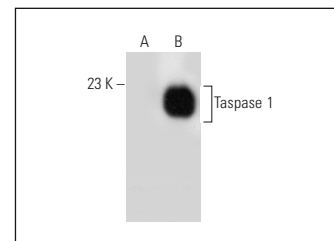
RECOMMENDED SUPPORT REAGENTS

To ensure optimal results, the following support reagents are recommended:
1) Western Blotting: use m-IgG κ BP-HRP: sc-516102 or m-IgG κ BP-HRP (Cruz Marker): sc-516102-CM (dilution range: 1:1000-1:10000), Cruz Marker™ Molecular Weight Standards: sc-2035, UltraCruz® Blocking Reagent: sc-516214 and Western Blotting Luminol Reagent: sc-2048.

DATA



Taspase 1 (F-7): sc-514676. Western blot analysis of Taspase 1 expression in non-transfected: sc-117752 (A) and mouse Taspase 1 transfected: sc-127633 (B) 293T whole cell lysates.



Taspase 1 (D-6): sc-514677. Western blot analysis of Taspase 1 expression in non-transfected: sc-117752 (A) and mouse Taspase 1 transfected: sc-127633 (B) 293T whole cell lysates.

RESEARCH USE

For research use only, not for use in diagnostic procedures.

PROTOCOLS

See our web site at www.scbt.com for detailed protocols and support products.