



SZABO SCANDIC

Part of Europa Biosite

Produktinformation



Forschungsprodukte & Biochemikalien



Zellkultur & Verbrauchsmaterial



Diagnostik & molekulare Diagnostik



Laborgeräte & Service

Weitere Information auf den folgenden Seiten!
See the following pages for more information!



Lieferung & Zahlungsart

siehe unsere [Liefer- und Versandbedingungen](#)

Zuschläge

- Mindermengenzuschlag
- Trockeneiszuschlag
- Gefahrgutzuschlag
- Expressversand

SZABO-SCANDIC HandelsgmbH

Quellenstraße 110, A-1100 Wien

T. +43(0)1 489 3961-0

F. +43(0)1 489 3961-7

mail@szabo-scandic.com

www.szabo-scandic.com

[linkedin.com/company/szaboscandic](https://www.linkedin.com/company/szaboscandic) 

ZFYVE19 (m): 293T Lysate: sc-127815

BACKGROUND

Zinc finger proteins contain DNA-binding domains and have a wide variety of functions, most of which encompass some form of transcriptional activation or repression. ZFYVE19 (zinc finger, FYVE domain containing 19), also known as MPFYVE (MLL partner containing FYVE domain), is a 471 amino acid protein that contains one FYVE-type zinc finger. Expressed in heart, brain, kidney, skeletal muscle and liver, ZFYVE19 may participate in transcriptional regulation events within the cell. Defects in the gene encoding ZFYVE19 are associated with acute myeloblastic leukemia (AML), a rapidly progressing cancer of the myeloid line of white blood cells that is characterized by fever, anemia, bone pain, shortness of breath and frequent infections. Three isoforms of ZFYVE19 exist due to alternative splicing events.

REFERENCES

- Hayette, S., Tigaud, I., Vanier, A., Martel, S., Corbo, L., Charrin, C., Beillard, E., Deleage, G., Magaud, J.P. and Rimokh, R. 2000. AF15q14, a novel partner gene fused to the MLL gene in an acute myeloid leukaemia with a t(11;15)(q23;q14). *Oncogene* 19: 4446-4450.
- Shibuya, N., Taki, T., Mugishima, H., Chin, M., Tsuchida, M., Sako, M., Kawa, K., Ishii, E., Miura, I., Yanagisawa, M. and Hayashi, Y. 2001. t(10;11)-acute leukemias with MLL-AF10 and MLL-ABI1 chimeric transcripts: specific expression patterns of ABI1 gene in leukemia and solid tumor cell lines. *Genes Chromosomes Cancer* 32: 1-10.
- Ono, R., Taki, T., Taketani, T., Taniwaki, M., Kobayashi, H. and Hayashi, Y. 2002. LCX, leukemia-associated protein with a CXXC domain, is fused to MLL in acute myeloid leukemia with trilineage dysplasia having t(10;11)(q22;q23). *Cancer Res.* 62: 4075-4080.
- Chinwalla, V., Chien, A., Odero, M., Neilly, M.B., Zeleznik-Le, N.J. and Rowley, J.D. 2003. A t(11;15) fuses MLL to two different genes, AF15q14 and a novel gene MPFYVE on chromosome 15. *Oncogene* 22: 1400-1410.
- Kuefer, M.U., Chinwalla, V., Zeleznik-Le, N.J., Behm, F.G., Naeve, C.W., Rakestraw, K.M., Mukatira, S.T., Raimondi, S.C. and Morris, S.W. 2003. Characterization of the MLL partner gene AF15q14 involved in t(11;15)(q23;q14). *Oncogene* 22: 1418-1424.
- Olsen, J.V., Blagoev, B., Gnad, F., Macek, B., Kumar, C., Mortensen, P. and Mann, M. 2006. Global, *in vivo*, and site-specific phosphorylation dynamics in signaling networks. *Cell* 127: 635-648.

CHROMOSOMAL LOCATION

Genetic locus: Zfyve19 (mouse) mapping to 2 E5.

PRODUCT

ZFYVE19 (m): 293T Lysate represents a lysate of mouse ZFYVE19 transfected 293T cells and is provided as 100 µg protein in 200 µl SDS-PAGE buffer.

STORAGE

Store at -20° C. Repeated freezing and thawing should be minimized. Sample vial should be boiled once prior to use. Non-hazardous. No MSDS required.

APPLICATIONS

ZFYVE19 (m): 293T Lysate is suitable as a Western Blotting positive control for mouse reactive ZFYVE19 antibodies. Recommended use: 10-20 µl per lane.

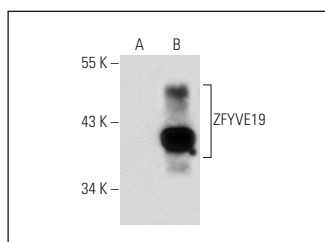
Control 293T Lysate: sc-117752 is available as a Western Blotting negative control lysate derived from non-transfected 293T cells.

ZFYVE19 (J-24): sc-101051 is recommended as a positive control antibody for Western Blot analysis of enhanced mouse ZFYVE19 expression in ZFYVE19 transfected 293T cells (starting dilution 1:100, dilution range 1:100-1:1,000).

RECOMMENDED SUPPORT REAGENTS

To ensure optimal results, the following support reagents are recommended:
 1) Western Blotting: use m-IgGκ BP-HRP: sc-516102 or m-IgGκ BP-HRP (Cruz Marker): sc-516102-CM (dilution range: 1:1000-1:10000), Cruz Marker™ Molecular Weight Standards: sc-2035, UltraCruz® Blocking Reagent: sc-516214 and Western Blotting Luminol Reagent: sc-2048.

DATA



ZFYVE19 (J-24): sc-101051. Western blot analysis of ZFYVE19 expression in non-transfected: sc-117752 (A) and mouse ZFYVE19 transfected: sc-127815 (B) 293T whole cell lysates.

RESEARCH USE

For research use only, not for use in diagnostic procedures.

PROTOCOLS

See our web site at www.scbt.com for detailed protocols and support products.