



# SZABO SCANDIC

Part of Europa Biosite

## Produktinformation



Forschungsprodukte & Biochemikalien



Zellkultur & Verbrauchsmaterial



Diagnostik & molekulare Diagnostik



Laborgeräte & Service

Weitere Information auf den folgenden Seiten!  
See the following pages for more information!



### Lieferung & Zahlungsart

siehe unsere [Liefer- und Versandbedingungen](#)

### Zuschläge

- Mindermengenzuschlag
- Trockeneiszuschlag
- Gefahrgutzuschlag
- Expressversand

### SZABO-SCANDIC HandelsgmbH

Quellenstraße 110, A-1100 Wien

T. +43(0)1 489 3961-0

F. +43(0)1 489 3961-7

[mail@szabo-scandic.com](mailto:mail@szabo-scandic.com)

[www.szabo-scandic.com](http://www.szabo-scandic.com)

[linkedin.com/company/szaboscandic](https://www.linkedin.com/company/szaboscandic) 

# ABLIM3 (h22): 293 Lysate: sc-127909

## BACKGROUND

The *C. elegans* protein Unc-115 mediates axon guidance by modulating the growth cone actin cytoskeleton in response to signals received by growth cone receptors. The mammalian homolog of Unc-115 is the actin-binding LIM protein family member 1 (ABLIM1, also designated Limatin). The ABLIM1 protein has an N-terminal domain that contains four double zinc finger motifs, which conform to the LIM motif consensus sequence. ABLIM1 binds to F-Actin through a dematin-like domain and is expressed in retina, brain and muscle tissue. There are four known isoforms of ABLIM1. The gene encoding ABLIM1 maps to a region of chromosome 10 associated with frequent loss of heterozygosity in human tumors, thus identifying ABLIM1 as a candidate tumor suppressor gene. ABLIM2 and ABLIM3 show highest expression in muscle and neuronal tissues, bind to F-Actin, and are localized on stress fibers. They also have been shown to enhance STARS (striated muscle activator of Rho signaling) dependent activation of serum-response factor (SRF), thereby modulating transcription.

## REFERENCES

- Kim, A.C., Peters, L.L., Knoll, J.H., Van Huffel, C., Ciciotte, S.L., Kleyn, P.W. and Chishti, A.H. 1997. Limatin (LIMAB1), an actin-binding LIM protein, maps to mouse chromosome 19 and human chromosome 10q25, a region frequently deleted in human cancers. *Genomics* 46: 291-293.
- Roof, D.J., Hayes, A., Adamian, M., Chishti, A.H. and Li, T. 1997. Molecular characterization of abLIM, a novel actin-binding and double zinc finger protein. *J. Cell Biol.* 138: 575-588.
- Lundquist, E.A., Herman, R.K., Shaw, J.E. and Bargmann, C.I. 1998. UNC-115, a conserved protein with predicted LIM and actin-binding domains, mediates axon guidance in *C. elegans*. *Neuron* 21: 385-392.
- Lu, C., Huang, X., Ma, H.F., Gooley, J.J., Aparacio, J., Roof, D.J., Chen, C., Chen, D.F. and Li, T. 2003. Normal retinal development and retinofugal projections in mice lacking the retina-specific variant of actin-binding LIM domain protein. *Neuroscience* 120: 121-131.
- Yang, Y. and Lundquist, E.A. 2005. The actin-binding protein UNC-115/abLIM controls formation of lamellipodia and filopodia and neuronal morphogenesis in *Caenorhabditis elegans*. *Mol. Cell. Biol.* 25: 5158-5170.
- Barrientos, T., Frank, D., Kuwahara, K., Bezprozvannaya, S., Pipes, G.C., Bassel-Duby, R., Richardson, J.A., Katus, H.A., Olson, E.N. and Frey, N. 2007. Two novel members of the ABLIM protein family, ABLIM-2 and -3, associate with STARS and directly bind F-actin. *J. Biol. Chem.* 282: 8393-8403.

## CHROMOSOMAL LOCATION

Genetic locus: ABLIM3 (human) mapping to 5q32.

## PRODUCT

ABLIM3 (h22): 293 Lysate represents a lysate of human ABLIM3 transfected 293 cells and is provided as 100 µg protein in 200 µl SDS-PAGE buffer.

## RESEARCH USE

For research use only, not for use in diagnostic procedures.

## APPLICATIONS

ABLIM3 (h22): 293 Lysate is suitable as a Western Blotting positive control for human reactive ABLIM3 antibodies. Recommended use: 10-20 µl per lane.

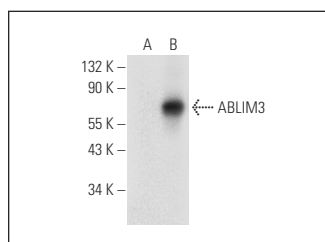
Control 293 Lysate: sc-110760 is available as a Western Blotting negative control lysate derived from non-transfected 293 cells.

ABLIM3 (C-2): sc-398575 is recommended as a positive control antibody for Western Blot analysis of enhanced human ABLIM3 expression in ABLIM3 transfected 293 cells (starting dilution 1:100, dilution range 1:100-1:1,000).

## RECOMMENDED SUPPORT REAGENTS

To ensure optimal results, the following support reagents are recommended:  
 1) Western Blotting: use m-IgGκ BP-HRP: sc-516102 or m-IgGκ BP-HRP (Cruz Marker): sc-516102-CM (dilution range: 1:1000-1:10000), Cruz Marker™ Molecular Weight Standards: sc-2035, UltraCruz® Blocking Reagent: sc-516214 and Western Blotting Luminol Reagent: sc-2048.

## DATA



ABLIM3 (C-2): sc-398575. Western blot analysis of ABLIM3 expression in non-transfected: sc-110760 (A) and human ABLIM3 transfected: sc-127909 (B) 293 whole cell lysates.

## STORAGE

Store at -20° C. Repeated freezing and thawing should be minimized. Sample vial should be boiled once prior to use. Non-hazardous. No MSDS required.

## PROTOCOLS

See our web site at [www.scbt.com](http://www.scbt.com) for detailed protocols and support products.