



SZABO SCANDIC

Part of Europa Biosite

Produktinformation



Forschungsprodukte & Biochemikalien



Zellkultur & Verbrauchsmaterial



Diagnostik & molekulare Diagnostik



Laborgeräte & Service

Weitere Information auf den folgenden Seiten!
See the following pages for more information!



Lieferung & Zahlungsart

siehe unsere [Liefer- und Versandbedingungen](#)

Zuschläge

- Mindermengenzuschlag
- Trockeneiszuschlag
- Gefahrgutzuschlag
- Expressversand

SZABO-SCANDIC HandelsgmbH

Quellenstraße 110, A-1100 Wien

T. +43(0)1 489 3961-0

F. +43(0)1 489 3961-7

mail@szabo-scandic.com

www.szabo-scandic.com

[linkedin.com/company/szaboscandic](https://www.linkedin.com/company/szaboscandic) 

C1q-C (h2): 293 Lysate: sc-128184

BACKGROUND

C1q, a subcomponent of the classical complement pathway, is composed of nine subunits that mediate classical complement activation and thereby play an important role in the immune response. Six of these subunits are disulfide-linked dimers of chains A and B, while three of these subunits, designated C1q-A through C1q-C, are disulfide-linked dimers of chain C. The presence of receptors for C1q on effector cells modulates its activity, which may be antibody-dependent or independent. Macrophages are the primary source of C1q, while anti-inflammatory drugs as well as cytokines differentially regulate expression of the mRNA, as well as the protein. However, its ability to modulate the interaction of platelets with collagen and immune complexes suggests C1q influences homeostasis as well as other immune activities, and perhaps thrombotic complications resulting from immune injury. Defects in C1q-A, C1q-B and C1q-C cause inactivation of the classical pathway, leading to a rare genetic disorder characterized by lupus-like symptoms.

REFERENCES

1. Gulati, P., et al. 1994. Expression of the components and regulatory proteins of the classical pathway of complement in normal and diseased synovium. *Rheumatol. Int.* 14: 13-19.
2. Petry, F., et al. 1996. The mouse C1q genes are clustered on chromosome 4 and show conservation of gene organization. *Immunogenetics* 43: 370-376.
3. Peerschke, E.I. and Ghebrehiwet, B. 1998. Platelet receptors for the complement component C1q: implications for haemostasis and thrombosis. *Immunobiology* 199: 239-249.
4. Kishore, U. and Reid, K.B. 2000. C1q: structure, function, and receptors. *Immunopharmacology* 49: 159-170.
5. Faust, D. and Loos, M. 2002. *In vitro* modulation of C1q mRNA expression and secretion by interleukin-1, interleukin-6, and interferon- γ in resident and stimulated murine peritoneal macrophages. *Immunobiology* 206: 368-376.
6. Faust, D., et al. 2002. Anti-inflammatory drugs modulate C1q secretion in human peritoneal macrophages *in vitro*. *Biochem. Pharmacol.* 64: 457-462.
7. Miura-Shimura, Y., et al. 2002. C1q regulatory region polymorphism down-regulating murine C1q protein levels with linkage to lupus nephritis. *J. Immunol.* 169: 1334-1339.
8. Chrast, R., et al. 2004. Complement factors in adult peripheral nerve: a potential role in energy metabolism. *Neurochem. Int.* 45: 353-359.

CHROMOSOMAL LOCATION

Genetic locus: C1QC (human) mapping to 1p36.12.

PRODUCT

C1q-C (h2): 293 Lysate represents a lysate of human C1q-C transfected 293 cells and is provided as 100 μ g protein in 200 μ l SDS-PAGE buffer.

STORAGE

Store at -20 $^{\circ}$ C. Repeated freezing and thawing should be minimized. Sample vial should be boiled once prior to use. Non-hazardous. No MSDS required.

APPLICATIONS

C1q-C (h2): 293 Lysate is suitable as a Western Blotting positive control for human reactive C1q-C antibodies. Recommended use: 10-20 μ l per lane.

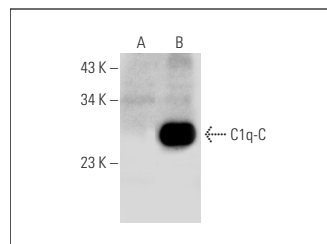
Control 293 Lysate: sc-110760 is available as a Western Blotting negative control lysate derived from non-transfected 293 cells.

C1q-C (A-12): sc-365301 is recommended as a positive control antibody for Western Blot analysis of enhanced human C1q-C expression in C1q-C transfected 293 cells (starting dilution 1:100, dilution range 1:100-1:1,000).

RECOMMENDED SUPPORT REAGENTS

To ensure optimal results, the following support reagents are recommended: 1) Western Blotting: use m-IgG κ BP-HRP: sc-516102 or m-IgG κ BP-HRP (Cruz Marker): sc-516102-CM (dilution range: 1:1000-1:10000), Cruz MarkerTM Molecular Weight Standards: sc-2035, UltraCruz[®] Blocking Reagent: sc-516214 and Western Blotting Luminol Reagent: sc-2048.

DATA



C1q-C (A-12): sc-365301. Western blot analysis of C1q-C expression in non-transfected: sc-110760 (A) and human C1q-C transfected: sc-128184 (B) 293 whole cell lysates.

RESEARCH USE

For research use only, not for use in diagnostic procedures.

PROTOCOLS

See our web site at www.scbt.com for detailed protocols and support products.