



SZABO SCANDIC

Part of Europa Biosite

Produktinformation



Forschungsprodukte & Biochemikalien



Zellkultur & Verbrauchsmaterial



Diagnostik & molekulare Diagnostik



Laborgeräte & Service

Weitere Information auf den folgenden Seiten!
See the following pages for more information!



Lieferung & Zahlungsart

siehe unsere [Liefer- und Versandbedingungen](#)

Zuschläge

- Mindermengenzuschlag
- Trockeneiszuschlag
- Gefahrgutzuschlag
- Expressversand

SZABO-SCANDIC HandelsgmbH

Quellenstraße 110, A-1100 Wien

T. +43(0)1 489 3961-0

F. +43(0)1 489 3961-7

mail@szabo-scandic.com

www.szabo-scandic.com

[linkedin.com/company/szaboscandic](https://www.linkedin.com/company/szaboscandic) 

Cdc2 p34 (h2): 293 Lysate: sc-128282

BACKGROUND

In vertebrates, as in yeast, multiple cyclins have been identified, including a total of eight such regulatory proteins in mammals. In contrast to the situation in yeast, the Cdc2 p34 kinase is not the only catalytic subunit identified in vertebrates that can interact with cyclins. While Cdc2 p34 is essential for the G₂ to M transition in vertebrate cells, a second Cdc2-related kinase has also been implicated in cell cycle control. This protein, designated cyclin-dependent kinase 2 (Cdk2) p33, also binds to cyclins and its kinase activity is temporally regulated during the cell cycle. Several additional Cdc2 p34-related cyclin dependent kinases have been identified. These include Cdk3, Cdk4, Cdk5, PCTAIRE-1, PCTAIRE-2, PCTAIRE-3, Cdk6, Cdk7, Cdk8 and KKIALLRE.

REFERENCES

- Riabowol, K., Draetta, G., Brizuela, L., Vandre, D. and Beach, D. 1989. The Cdc2 kinase is a nuclear protein that is essential for mitosis in mammalian cells. *Cell* 57: 393-401.
- Morla, A.O., Draetta, G., Beach, D. and Wang, J.Y. 1989. Reversible tyrosine phosphorylation of Cdc2: dephosphorylation accompanies activation during entry into mitosis. *Cell* 58: 193-203.
- Pines, J. and Hunter, T.I. 1989. Isolation of a human cyclin cDNA: evidence for cyclin mRNA and protein regulation in the cell cycle and for interaction with p34Cdc2. *Cell* 58: 833-846.
- Kobayashi, H., Golsteyn, R., Poon, R., Stewart, E., Gannon, J., Minshull, J., Smith, R. and Hunt, T. 1991. Cyclins and their partners during *Xenopus* oocyte maturation. *Cold Spring Harb. Symp. Quant. Biol.* 56:437-56447.
- Xiong, Y., Connolly, T., Futcher, B. and Beach, D. 1991. Human D-type cyclin. *Cell* 65: 691-699.
- Pagano, M., Pepperkok, R., Verde, F., Ansorge, W. and Draetta, G. 1992. Cyclin A is required at two points in the human cell cycle. *EMBO J.* 11: 961-971.
- Lukas, J., Draetta, G. and Bartek, J. 1992. Distinct forms of human Cdc2 identified by novel monoclonal antibodies. *Eur. J. Biochem.* 207: 169-176.
- Elledge, S.J., Richman, R., Hall, F.L., Williams, R.T., Lodgson, N. and Harper, J.W. 1992. Cdk2 encodes a 33 kDa cyclin A-associated protein kinase and is expressed before Cdc2 in the cell cycle. *Proc. Natl. Acad. Sci. USA* 89: 2907-2911.
- O'Connor, P.M., Ferris, D.K., Pagano, M., Draetta, G., Pines, J., Hunter, T., Longo, D.L. and Kohn, K.W. 1993. G₂ delay induced by nitrogen mustard in human cells affects cyclin A/Cdk2 and cyclin B1/Cdc2-kinase complexes differently. *J. Biol. Chem.* 268: 8298-8308.

STORAGE

Store at -20° C. Repeated freezing and thawing should be minimized. Sample vial should be boiled once prior to use. Non-hazardous. No MSDS required.

PROTOCOLS

See our web site at www.scbt.com for detailed protocols and support products.

CHROMOSOMAL LOCATION

Genetic locus: CDC2 (human) mapping to 10q21.2.

PRODUCT

Cdc2 p34 (h2): 293 Lysate represents a lysate of human Cdc2 p34 transfected 293 cells and is provided as 100 µg protein in 200 µl SDS-PAGE buffer.

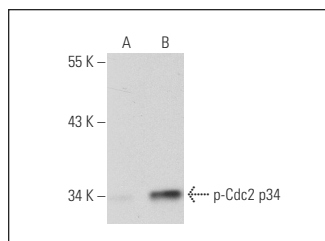
APPLICATIONS

Cdc2 p34 (h2): 293 Lysate is suitable as a Western Blotting positive control for human reactive P-N antibodies. Recommended use: 10-20 µl per lane.

Control 293 Lysate: sc-110760 is available as a Western Blotting negative control lysate derived from non-transfected 293 cells.

p-Cdc2 p34 (pY15.44): sc-136014 is recommended as a positive control antibody for Western Blot analysis of enhanced human Cdc2 p34 expression in Cdc2 p34 transfected 293 cells (starting dilution 1:100, dilution range 1:100-1:1,000).

DATA



p-Cdc2 p34 (pY15.44): sc-136014. Western blot analysis of Cdc2 p34 phosphorylation in non-transfected: sc-110760 (A) and human Cdc2 p34 transfected: sc-128282 (B) 293 whole cell lysates.

RESEARCH USE

For research use only, not for use in diagnostic procedures.