



SZABO SCANDIC

Part of Europa Biosite

Produktinformation



Forschungsprodukte & Biochemikalien



Zellkultur & Verbrauchsmaterial



Diagnostik & molekulare Diagnostik



Laborgeräte & Service

Weitere Information auf den folgenden Seiten!
See the following pages for more information!



Lieferung & Zahlungsart

siehe unsere [Liefer- und Versandbedingungen](#)

Zuschläge

- Mindermengenzuschlag
- Trockeneiszuschlag
- Gefahrgutzuschlag
- Expressversand

SZABO-SCANDIC HandelsgmbH

Quellenstraße 110, A-1100 Wien

T. +43(0)1 489 3961-0

F. +43(0)1 489 3961-7

mail@szabo-scandic.com

www.szabo-scandic.com

[linkedin.com/company/szaboscandic](https://www.linkedin.com/company/szaboscandic) 

galectin-1 (h2): 293T Lysate: sc-128680

BACKGROUND

Galectins are a family of soluble β -galactoside-binding animal lectins that modulate cell-to-cell adhesion and cell-to-extracellular matrix (ECM) interactions and play a role in tumor progression, pre-mRNA splicing and apoptosis. Specifically, galectin-1 is an autocrine regulator of cell proliferation that plays a role in the maintenance of G_0 and in the control of G_2 traverse. Galectin-1, also known as LGALS1, is the protein product of a single gene linked to human chromosome 22q13.1. The galectin-1 protein contains 135 amino acids, a single internal EcoRI site and a polyadenylation signal. Galectin-1 can localize to both intracellular and extracellular space. Galectin-1 is expressed in human placenta, human lung, HL-6, Hep G2 and CEM cells.

REFERENCES

1. Couraud, P.O., et al. 1989. Molecular cloning, characterization, and expression of a human 14 kDa lectin. *J. Biol. Chem.* 264: 1310-1316.
2. Hirabayashi, J., et al. 1989. Cloning and nucleotide sequence of a full-length cDNA for human 14 kDa β -galactoside-binding lectin. *Biochim. Biophys. Acta* 1008: 85-91.
3. Abbott, W.M., et al. 1989. Evidence that the 14 kDa soluble β -galactoside-binding lectin in man is encoded by a single gene. *Biochem. J.* 259: 291-294.
4. Goldstone, S.D., et al. 1991. Isolation of a cDNA clone, encoding a human β -galactoside binding protein, overexpressed during glucocorticoid-induced cell death. *Biochem. Biophys. Res. Commun.* 178: 746-750.
5. Baldini, A., et al. 1993. Mapping on human and mouse chromosomes of the gene for the β -galactoside-binding protein, an autocrine-negative growth factor. *Genomics* 15: 216-218.
6. Mehrabian, M., et al. 1993. Two members of the S-lac lectin gene family, LGALS1 and LGALS2, reside in close proximity on human chromosome 22q12-q13. *Genomics* 15: 418-420.

CHROMOSOMAL LOCATION

Genetic locus: LGALS1 (human) mapping to 22q13.1.

PRODUCT

galectin-1 (h2): 293T Lysate represents a lysate of human galectin-1 transfected 293T cells and is provided as 100 μ g protein in 200 μ l SDS-PAGE buffer.

APPLICATIONS

galectin-1 (h2): 293T Lysate is suitable as a Western Blotting positive control for human reactive galectin-1 antibodies. Recommended use: 10-20 μ l per lane.

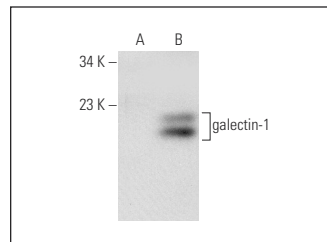
Control 293T Lysate: sc-117752 is available as a Western Blotting negative control lysate derived from non-transfected 293T cells.

galectin-1 (E-2): sc-166619 is recommended as a positive control antibody for Western Blot analysis of enhanced human galectin-1 expression in galectin-1 transfected 293T cells (starting dilution 1:100, dilution range 1:100-1:1,000).

RECOMMENDED SUPPORT REAGENTS

To ensure optimal results, the following support reagents are recommended:
1) Western Blotting: use m-IgG κ BP-HRP: sc-516102 or m-IgG κ BP-HRP (Cruz Marker): sc-516102-CM (dilution range: 1:1000-1:10000), Cruz Marker™ Molecular Weight Standards: sc-2035, UltraCruz® Blocking Reagent: sc-516214 and Western Blotting Luminol Reagent: sc-2048.

DATA



galectin-1 (E-2): sc-166619. Western blot analysis of galectin-1 expression in non-transfected: sc-117752 (A) and human galectin-1 transfected: sc-128680 (B) 293T whole cell lysates.

STORAGE

Store at -20° C. Repeated freezing and thawing should be minimized. Sample vial should be boiled once prior to use. Non-hazardous. No MSDS required.

RESEARCH USE

For research use only, not for use in diagnostic procedures.

PROTOCOLS

See our web site at www.scbt.com for detailed protocols and support products.