



SZABO SCANDIC

Part of Europa Biosite

Produktinformation



Forschungsprodukte & Biochemikalien



Zellkultur & Verbrauchsmaterial



Diagnostik & molekulare Diagnostik



Laborgeräte & Service

Weitere Information auf den folgenden Seiten!
See the following pages for more information!



Lieferung & Zahlungsart

siehe unsere [Liefer- und Versandbedingungen](#)

Zuschläge

- Mindermengenzuschlag
- Trockeneiszuschlag
- Gefahrgutzuschlag
- Expressversand

SZABO-SCANDIC HandelsgmbH

Quellenstraße 110, A-1100 Wien

T. +43(0)1 489 3961-0

F. +43(0)1 489 3961-7

mail@szabo-scandic.com

www.szabo-scandic.com

[linkedin.com/company/szaboscandic](https://www.linkedin.com/company/szaboscandic) 

RSHL1 (h): 293T Lysate: sc-129687

BACKGROUND

RSHL1 (radial spoke head-like protein 1), also known as RSPH6A (radial spoke head protein 6 homolog A), is a 717 amino acid protein that belongs to the flagellar radial spoke RSP4/6 family. The gene encoding RSHL1 maps to human chromosome 19q13.32. Consisting of around 63 million bases with over 1,400 genes, chromosome 19 makes up over 2% of human genomic DNA. Chromosome 19 includes a diversity of interesting genes and is recognized for having the greatest gene density of the human chromosomes. It is the genetic home for a number of immunoglobulin superfamily members including the killer cell and leukocyte Ig-like receptors, a number of ICAMs, the CEACAM and PSG families, and Fc α receptors. Key genes for eye color and hair color also map to chromosome 19. Peutz-Jeghers syndrome, spinocerebellar ataxia type 6, the stroke disorder CADASIL, hypercholesterolemia and Insulin-dependent diabetes have been linked to chromosome 19. Trans-locations with chromosome 19 and chromosome 14 can be seen in some lymphoproliferative disorders and typically involve the proto-oncogene BCL3.

REFERENCES

- Olsen, A., et al. 1994. Gene organization of the pregnancy-specific glycoprotein region on human chromosome 19: assembly and analysis of a 700-kb cosmid contig spanning the region. *Genomics* 23: 659-668.
- Teglund, S., et al. 1994. The pregnancy-specific glycoprotein (PSG) gene cluster on human chromosome 19: fine structure of the 11 PSG genes and identification of 6 new genes forming a third subgroup within the carcinoembryonic antigen (CEA) family. *Genomics* 23: 669-684.
- Wang, L., et al. 2000. C-CAM1, a candidate tumor suppressor gene, is abnormally expressed in primary lung cancers. *Clin. Cancer Res.* 6: 2988-2993.
- Eriksson, M., et al. 2001. A mammalian radial spokehead-like gene, RSHL1, at the myotonic dystrophy-1 locus. *Biochem. Biophys. Res. Commun.* 281: 835-841.
- Trowsdale, J., et al. 2001. The genomic context of natural killer receptor extended gene families. *Immunol. Rev.* 181: 20-38.
- Le Meur, N., et al. 2004. Complete germline deletion of the STK11 gene in a family with Peutz-Jeghers syndrome. *Eur. J. Hum. Genet.* 12: 415-418.
- Leeb, T., et al. 2004. Comparative human-mouse-rat sequence analysis of the ICAM gene cluster on HSA 19p13.2 and a 185-kb porcine region from SSC 2q. *Gene* 343: 239-244.
- Barrow, A.D., et al. 2008. The extended human leukocyte receptor complex: diverse ways of modulating immune responses. *Immunol. Rev.* 224: 98-123.

CHROMOSOMAL LOCATION

Genetic locus: RSPH6A (human) mapping to 19q13.32.

PRODUCT

RSHL1 (h): 293T Lysate represents a lysate of human RSHL1 transfected 293T cells and is provided as 100 μ g protein in 200 μ l SDS-PAGE buffer.

APPLICATIONS

RSHL1 (h): 293T Lysate is suitable as a Western Blotting positive control for human reactive RSHL1 antibodies. Recommended use: 10-20 μ l per lane.

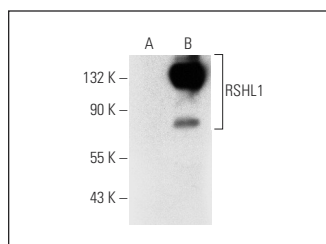
Control 293T Lysate: sc-117752 is available as a Western Blotting negative control lysate derived from non-transfected 293T cells.

RSHL1 (C-4): sc-398329 is recommended as a positive control antibody for Western Blot analysis of enhanced human RSHL1 expression in RSHL1 transfected 293T cells (starting dilution 1:100, dilution range 1:100-1:1,000).

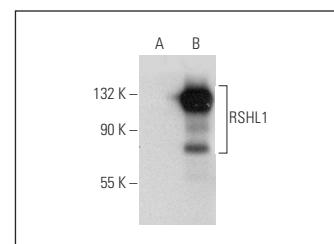
RECOMMENDED SUPPORT REAGENTS

To ensure optimal results, the following support reagents are recommended:
 1) Western Blotting: use m-IgG κ BP-HRP: sc-516102 or m-IgG κ BP-HRP (Cruz Marker): sc-516102-CM (dilution range: 1:1000-1:10000), Cruz Marker™ Molecular Weight Standards: sc-2035, UltraCruz® Blocking Reagent: sc-516214 and Western Blotting Luminol Reagent: sc-2048.

DATA



RSHL1 (C-4): sc-398329. Western blot analysis of RSHL1 expression in non-transfected: sc-117752 (A) and human RSHL1 transfected: sc-129687 (B) 293T whole cell lysates.



RSHL1 (C-9): sc-398317. Western blot analysis of RSHL1 expression in non-transfected: sc-117752 (A) and human RSHL1 transfected: sc-129687 (B) 293T whole cell lysates.

STORAGE

Store at -20° C. Repeated freezing and thawing should be minimized. Sample vial should be boiled once prior to use. Non-hazardous. No MSDS required.

RESEARCH USE

For research use only, not for use in diagnostic procedures.

PROTOCOLS

See our web site at www.scbt.com for detailed protocols and support products.