



SZABO SCANDIC

Part of Europa Biosite

Produktinformation



Forschungsprodukte & Biochemikalien



Zellkultur & Verbrauchsmaterial



Diagnostik & molekulare Diagnostik



Laborgeräte & Service

Weitere Information auf den folgenden Seiten!
See the following pages for more information!



Lieferung & Zahlungsart

siehe unsere [Liefer- und Versandbedingungen](#)

Zuschläge

- Mindermengenzuschlag
- Trockeneiszuschlag
- Gefahrgutzuschlag
- Expressversand

SZABO-SCANDIC HandelsgmbH

Quellenstraße 110, A-1100 Wien

T. +43(0)1 489 3961-0

F. +43(0)1 489 3961-7

mail@szabo-scandic.com

www.szabo-scandic.com

[linkedin.com/company/szaboscandic](https://www.linkedin.com/company/szaboscandic) 

52 kDa Ro/SSA (h): 293T Lysate: sc-158201

ACKGROUND

Ro autoantigens are of clinical significance because antibodies directed against them are found in most patients with primary Sjogren syndrome, subacute cutaneous lupus erythematosus (SLE), neonatal lupus erythematosus, ANA-negative lupus erythematosus and systemic lupus erythematosus-like disease secondary to homozygous C2 or C4 complement deficiency. Ro/SSA is a ribonucleoprotein that binds to autoantibodies in 35 to 50% of patients with SLE and in up to 97% of patients with Sjogren syndrome. The Ro/SSA particle consists of a single immunoreactive protein noncovalently bound with one of four small RNA molecules. Most anti-Ro/SSA-positive sera have antibodies not only against the immunoreactive protein, but also against an Ro/SSA protein. La/SSB is an autoimmune RNA-binding protein that plays a role in the transcription of RNA polymerase III was originally defined by its reactivity with autoantibodies from patients with Sjogren syndrome and SLE.

REFERENCES

1. Chambers, J.C., et al. 1988. Genomic structure and amino acid sequence domains of the human La autoantigen. *J. Biol. Chem.* 263: 18043-18051.
2. Itoh, K., et al. 1991. Protein heterogeneity in the human Ro/SSA ribonucleoproteins. The 52 and 60 kDa Ro/SSA autoantigens are encoded by separate genes. *J. Clin. Invest.* 87: 177-186.
3. Frank, M.B., et al. 1993. The mapping of the human 52 kDa Ro/SSA autoantigen gene to human chromosome 11, and its polymorphisms. *Am. J. Hum. Genet.* 52: 183-191.
4. Chan, E.K., et al. 1994. Human 60 kDa SSA/Ro ribonucleoprotein autoantigen gene (SSA2) localized to 1q31 by fluorescence *in situ* hybridization. *Genomics* 23: 298-300.

CHROMOSOMAL LOCATION

Genetic locus: TRIM21 (human) mapping to 11p15.4.

PRODUCT

52 kDa Ro/SSA (h): 293T Lysate represents a lysate of human 52 kDa Ro/SSA transfected 293T cells and is provided as 100 µg protein in 200 µl SDS-PAGE buffer.

RESEARCH USE

For research use only, not for use in diagnostic procedures.

APPLICATIONS

52 kDa Ro/SSA (h): 293T Lysate is suitable as a Western Blotting positive control for human reactive 52 kDa Ro/SSA antibodies. Recommended use: 10-20 µl per lane.

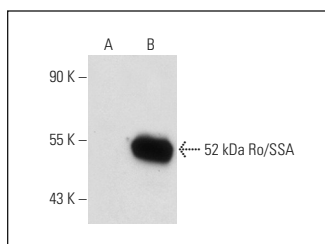
Control 293T Lysate: sc-117752 is available as a Western Blotting negative control lysate derived from non-transfected 293T cells.

52 kDa Ro/SSA (E-11): sc-48430 is recommended as a positive control antibody for Western Blot analysis of enhanced human 52 kDa Ro/SSA expression in 52 kDa Ro/SSA transfected 293T cells (starting dilution 1:100, dilution range 1:100-1:1,000).

RECOMMENDED SUPPORT REAGENTS

To ensure optimal results, the following support reagents are recommended:
1) Western Blotting: use m-IgGκ BP-HRP: sc-516102 or m-IgGκ BP-HRP (Cruz Marker): sc-516102-CM (dilution range: 1:1000-1:10000), Cruz Marker™ Molecular Weight Standards: sc-2035, UltraCruz® Blocking Reagent: sc-516214 and Western Blotting Luminol Reagent: sc-2048.

DATA



52 kDa Ro/SSA (E-11): sc-48430. Western blot analysis of 52 kDa Ro/SSA expression in non-transfected: sc-117752 (A) and human 52 kDa Ro/SSA transfected: sc-158201 (B) 293T whole cell lysates.

STORAGE

Store at -20° C. Repeated freezing and thawing should be minimized. Sample vial should be boiled once prior to use. Non-hazardous. No MSDS required.

PROTOCOLS

See our web site at www.scbt.com for detailed protocols and support products.