



SZABO SCANDIC

Part of Europa Biosite

Produktinformation



Forschungsprodukte & Biochemikalien



Zellkultur & Verbrauchsmaterial



Diagnostik & molekulare Diagnostik



Laborgeräte & Service

Weitere Information auf den folgenden Seiten!
See the following pages for more information!



Lieferung & Zahlungsart

siehe unsere [Liefer- und Versandbedingungen](#)

Zuschläge

- Mindermengenzuschlag
- Trockeneiszuschlag
- Gefahrgutzuschlag
- Expressversand

SZABO-SCANDIC HandelsgmbH

Quellenstraße 110, A-1100 Wien

T. +43(0)1 489 3961-0

F. +43(0)1 489 3961-7

mail@szabo-scandic.com

www.szabo-scandic.com

[linkedin.com/company/szaboscandic](https://www.linkedin.com/company/szaboscandic) 

α 1a Tubulin (h7): 293 Lysate: sc-158206

BACKGROUND

Tubulin is a major cytoskeleton component that has five distinct forms, designated α , β , γ , δ and ϵ Tubulin. α and β Tubulins form heterodimers which multimerize to form a microtubule filament. There are five β Tubulin isoforms (β 1, β 2, β 3, β 4A and β 4B) that are expressed in mammalian tissues. β 1 and β 4 are present throughout the cytosol, β 2 is present in the nuclei and nucleoplasm, and β 3 is a neuron-specific cytoskeletal protein. γ Tubulin forms the gammasome, which is required for nucleating microtubule filaments at the centrosome. Both δ Tubulin and ϵ Tubulin are associated with the centrosome. δ Tubulin is a homolog of the *Chlamydomonas* δ Tubulin Uni3 and is found in association with the centrioles, whereas ϵ Tubulin localizes to the pericentriolar material. ϵ Tubulin exhibits a cell cycle-specific pattern of localization; first associating with only the older of the centrosomes in a newly duplicated pair, and later associating with both centrosomes.

REFERENCES

- Weisenberg, R. 1981. Invited review: the role of nucleotide triphosphate in Actin and tubulin assembly and function. *Cell Motil.* 1: 485-497.
- Burns, R.G. 1991. α , β , and γ Tubulins: sequence comparisons and structural constraints. *Cell Motil. Cytoskeleton* 20: 181-189.
- Zheng, Y., Jung, M.K. and Oakley, B.R. 1991. γ Tubulin is present in *Drosophila melanogaster* and *Homo sapiens* and is associated with the centrosome. *Cell* 65: 817-823.
- Leask, A. and Stearns, T. 1998. Expression of amino- and carboxyl-terminal γ and β Tubulin mutants in cultured epithelial cells. *J. Biol. Chem.* 273: 2661-2668.
- Ludueña, R.F. 1998. Multiple forms of tubulin: different gene products and covalent modifications. *Int. Rev. Cytol.* 178: 207-275.
- Walss, C., Kreisberg, J.I. and Ludueña, R.F. 1999. Presence of the β 2 iso-type of tubulin in the nuclei of cultured mesangial cells from rat kidney. *Cell Motil. Cytoskeleton* 42: 274-284.
- Modig, C., Olsson, P.E., Barasoain, I., de Ines, C., Andreu, J.M., Roach, M.C., Ludueña, R.F. and Wallin, M. 1999. Identification of β 3 and β 4 Tubulin isotypes in cold-adapted microtubules from Atlantic cod (*Gadus morhua*): antibody mapping and cDNA sequencing. *Cell Motil. Cytoskeleton* 42: 315-330.
- Woulfe, J. and Munoz, D. 2000. Tubulin immunoreactive neuronal intranuclear inclusions in the human brain. *Neuropathol. Appl. Neurobiol.* 26: 161-171.
- Chang, P. and Stearns, T. 2000. δ Tubulin and ϵ Tubulin: two new human centrosomal tubulins reveal new aspects of centrosome structure and function. *Nat. Cell Biol.* 2: 30-35.

CHROMOSOMAL LOCATION

Genetic locus: TUBA1A (human) mapping to 12q13.12.

STORAGE

Store at -20° C. Repeated freezing and thawing should be minimized. Sample vial should be boiled once prior to use. Non-hazardous. No MSDS required.

PRODUCT

α 1a Tubulin (h7): 293 Lysate represents a lysate of human α 1a Tubulin transfected 293 cells and is provided as 100 μ g protein in 200 μ l SDS-PAGE buffer.

APPLICATIONS

α 1a Tubulin (h7): 293 Lysate is suitable as a Western Blotting positive control for human reactive α 1a Tubulin antibodies. Recommended use: 10-20 μ l per lane.

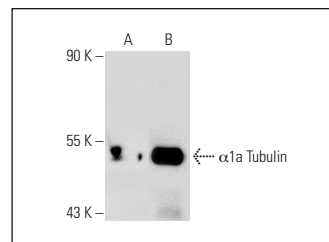
Control 293 Lysate: sc-110760 is available as a Western Blotting negative control lysate derived from non-transfected 293 cells.

α 1a Tubulin (6A204): sc-69969 is recommended as a positive control antibody for Western Blot analysis of enhanced human α Tubulin expression in α 1a Tubulin transfected 293 cells (starting dilution 1:100, dilution range 1:100-1:1,000).

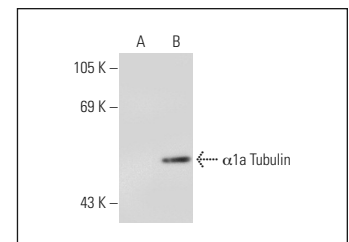
RECOMMENDED SUPPORT REAGENTS

To ensure optimal results, the following support reagents are recommended:
1) Western Blotting: use m-IgG κ BP-HRP: sc-516102 or m-IgG κ BP-HRP (Cruz Marker): sc-516102-CM (dilution range: 1:1000-1:10000), Cruz Marker™ Molecular Weight Standards: sc-2035, UltraCruz® Blocking Reagent: sc-516214 and Western Blotting Luminol Reagent: sc-2048.

DATA



α Tubulin (6A204): sc-69969. Western blot analysis of α 1a Tubulin expression in non-transfected: sc-110760 (A) and human α 1a Tubulin transfected: sc-158206 (B) 293 whole cell lysates.



α Tubulin (YOL1/34): sc-53030. Western blot analysis of α 1a Tubulin expression in non-transfected: sc-110760 (A) and human α 1a Tubulin transfected: sc-158206 (B) 293 whole cell lysates.

RESEARCH USE

For research use only, not for use in diagnostic procedures.

PROTOCOLS

See our web site at www.scbt.com for detailed protocols and support products.