



SZABO SCANDIC

Part of Europa Biosite

Produktinformation



Forschungsprodukte & Biochemikalien



Zellkultur & Verbrauchsmaterial



Diagnostik & molekulare Diagnostik



Laborgeräte & Service

Weitere Information auf den folgenden Seiten!
See the following pages for more information!



Lieferung & Zahlungsart

siehe unsere [Liefer- und Versandbedingungen](#)

Zuschläge

- Mindermengenzuschlag
- Trockeneiszuschlag
- Gefahrgutzuschlag
- Expressversand

SZABO-SCANDIC HandelsgmbH

Quellenstraße 110, A-1100 Wien

T. +43(0)1 489 3961-0

F. +43(0)1 489 3961-7

mail@szabo-scandic.com

www.szabo-scandic.com

[linkedin.com/company/szaboscandic](https://www.linkedin.com/company/szaboscandic) 

CaMKV (h3): 293T Lysate: sc-158336

BACKGROUND

The Ca²⁺/calmodulin-dependent protein kinases (CaMKs) comprise a structurally related subfamily of serine/threonine kinases. CaMKV (CaM kinase-like vesicle-associated), also known as 1G5 or VACAMKL, is a 501 amino acid protein that localizes to cytoplasmic vesicles, as well as to the cell membrane, and contains one protein kinase domain. Although a member of the CaMK family, CaMKV is thought to be catalytically inactive, but it may play a role in vesicle function and nervous system development. Multiple isoforms of CaMKV exist due to alternative splicing events. The gene encoding CaMKV maps to human chromosome 3, which houses over 1,100 genes, including a chemokine receptor (CKR) gene cluster and a variety of human cancer-related gene loci. Key tumor suppressing genes on chromosome 3 include those that encode the apoptosis mediator RASSF1, the cell migration regulator HYAL1 and the angiogenesis suppressor SEMA3B. Marfan Syndrome, porphyria, von Hippel-Lindau syndrome, osteogenesis imperfecta and Charcot-Marie-Tooth disease are a few of the numerous genetic diseases associated with chromosome 3.

REFERENCES

- Godbout, M., Erlander, M.G., Hasel, K.W., Danielson, P.E., Wong, K.K., Battenberg, E.L., Foye, P.E., Bloom, F.E. and Sutcliffe, J.G. 1994. 1G5: a calmodulin-binding, vesicle-associated, protein kinase-like protein enriched in forebrain neurites. *J. Neurosci.* 14: 1-13.
- Müller, S., Stanyon, R., Finelli, P., Archidiacono, N. and Wienberg, J. 2000. Molecular cytogenetic dissection of human chromosomes 3 and 21 evolution. *Proc. Natl. Acad. Sci. USA* 97: 206-211.
- Braga, E.A., Kashuba, V.I., Maliukova, A.V., Loginov, V.I., Senchenko, V.N., Bazov, I.V., Kiselev, L.L. and Zabarovskii, E.R. 2003. New tumor suppressor genes in hot spots of human chromosome 3: new methods of identification. *Mol. Biol.* 37: 194-211.
- Tsend-Ayush, E., Grützner, F., Yue, Y., Grossmann, B., Hänsel, U., Sudbrak, R. and Haaf, T. 2004. Plasticity of human chromosome 3 during primate evolution. *Genomics* 83: 193-202.
- Ballif, B.A., Villén, J., Beausoleil, S.A., Schwartz, D. and Gygi, S.P. 2004. Phosphoproteomic analysis of the developing mouse brain. *Mol. Cell. Proteomics* 3: 1093-1101.
- Yue, Y., Grossmann, B., Ferguson-Smith, M., Yang, F. and Haaf, T. 2005. Comparative cytogenetics of human chromosome 3q21.3 reveals a hot spot for ectopic recombination in hominoid evolution. *Genomics* 85: 36-47.
- Darai, E., Kost-Alimova, M., Kiss, H., Kansoul, H., Klein, G. and Imreh, S. 2005. Evolutionarily plastic regions at human 3p21.3 coincide with tumor breakpoints identified by the "elimination test". *Genomics* 86: 1-12.

CHROMOSOMAL LOCATION

Genetic locus: CAMKV (human) mapping to 3p21.31.

PRODUCT

CaMKV (h3): 293T Lysate represents a lysate of human CaMKV transfected 293T cells and is provided as 100 µg protein in 200 µl SDS-PAGE buffer.

APPLICATIONS

CaMKV (h3): 293T Lysate is suitable as a Western Blotting positive control for human reactive CaMKV antibodies. Recommended use: 10-20 µl per lane.

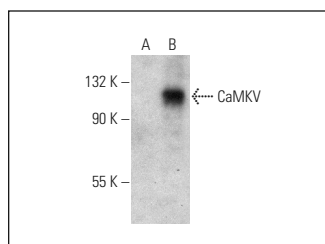
Control 293T Lysate: sc-117752 is available as a Western Blotting negative control lysate derived from non-transfected 293T cells.

CaMKV (2F3-1A2): sc-517082 is recommended as a positive control antibody for Western Blot analysis of enhanced human CaMKV expression in CaMKV transfected 293T cells (starting dilution 1:100, dilution range 1:100-1:1,000).

RECOMMENDED SUPPORT REAGENTS

To ensure optimal results, the following support reagents are recommended:
 1) Western Blotting: use m-IgGκ BP-HRP: sc-516102 or m-IgGκ BP-HRP (Cruz Marker): sc-516102-CM (dilution range: 1:1000-1:10000), Cruz Marker™ Molecular Weight Standards: sc-2035, UltraCruz® Blocking Reagent: sc-516214 and Western Blotting Luminol Reagent: sc-2048.

DATA



CaMKV (2F3-1A2): sc-517082. Western blot analysis of CaMKV expression in non-transfected: sc-117752 (A) and human CaMKV transfected: sc-158336 (B) 293T whole cell lysates

STORAGE

Store at 4° C, **DO NOT FREEZE**. Stable for one year from the date of shipment. Non-hazardous. No MSDS required.

RESEARCH USE

For research use only, not for use in diagnostic procedures.

PROTOCOLS

See our web site at www.scbt.com for detailed protocols and support products.