



# SZABO SCANDIC

Part of Europa Biosite

## Produktinformation



Forschungsprodukte & Biochemikalien



Zellkultur & Verbrauchsmaterial



Diagnostik & molekulare Diagnostik



Laborgeräte & Service

Weitere Information auf den folgenden Seiten!  
See the following pages for more information!



### Lieferung & Zahlungsart

siehe unsere [Liefer- und Versandbedingungen](#)

### Zuschläge

- Mindermengenzuschlag
- Trockeneiszuschlag
- Gefahrgutzuschlag
- Expressversand

### SZABO-SCANDIC HandelsgmbH

Quellenstraße 110, A-1100 Wien

T. +43(0)1 489 3961-0

F. +43(0)1 489 3961-7

[mail@szabo-scandic.com](mailto:mail@szabo-scandic.com)

[www.szabo-scandic.com](http://www.szabo-scandic.com)

[linkedin.com/company/szaboscandic](https://www.linkedin.com/company/szaboscandic) 

# Fibrinogen $\gamma$ (h): 293T Lysate: sc-158507

## BACKGROUND

The plasma glycoprotein Fibrinogen is synthesized in the liver and comprises three structurally different subunits:  $\alpha$ ,  $\beta$  and  $\gamma$ . Fibrinogen is important in platelet aggregation, the final step of the coagulation cascade (i.e. the formation of Fibrin) and determination of plasma viscosity and erythrocyte aggregation. It is both constitutively expressed and inducible during an acute phase reaction. Hemostasis following tissue injury deploys essential plasma procoagulants (Prothrombin and Factors X, IX, V and VIII), which are involved in a blood coagulation cascade leading to the formation of insoluble Fibrin clots and the promotion of platelet aggregation. Following vascular injury, Fibrinogen is cleaved by Thrombin to form Fibrin, which is the most abundant component of blood clots. The cleavage products of Fibrinogen regulate cell adhesion and spreading, display vasoconstrictor and chemotactic activities and are mitogens for several cell types.

## REFERENCES

1. Davie, E.W. and Fujikawa, K. 1975. Basic mechanisms in blood coagulation. *Annu. Rev. Biochem.* 44: 799-829.
2. Davie, E.W., et al. 1991. The coagulation cascade: initiation, maintenance, and regulation. *Biochemistry* 30: 10363-10370.
3. Danesh, J., et al. 1998. Association of Fibrinogen, C-reactive protein, Albumin, or leukocyte count with coronary heart disease: meta-analyses of prospective studies. *JAMA* 279: 1477-1482.
4. Lowe, G., et al. 2000. Blood rheology, cardiovascular risk factors, and cardiovascular disease: the west of Scotland coronary prevention study. *Thromb. Haemost.* 84: 553-558.
5. Reinhart, W.H. 2003. Fibrinogen—marker or mediator of vascular disease? *Vasc. Med.* 8: 211-216.
6. Online Mendelian Inheritance in Man, OMIM™. 2004. Johns Hopkins University, Baltimore, MD. MIM Number: 134820. World Wide Web URL: <http://www.ncbi.nlm.nih.gov/omim/>
7. LocusLink Report (LocusID: 2243). <http://www.ncbi.nlm.nih.gov/LocusLink/>

## CHROMOSOMAL LOCATION

Genetic locus: FGG (human) mapping to 4q31.3.

## PRODUCT

Fibrinogen  $\gamma$  (h): 293T Lysate represents a lysate of human Fibrinogen  $\gamma$  transfected 293T cells and is provided as 100  $\mu$ g protein in 200  $\mu$ l SDS-PAGE buffer.

## STORAGE

Store at -20° C. Repeated freezing and thawing should be minimized. Sample vial should be boiled once prior to use. Non-hazardous. No MSDS required.

## PROTOCOLS

See our web site at [www.scbt.com](http://www.scbt.com) for detailed protocols and support products.

## APPLICATIONS

Fibrinogen  $\gamma$  (h): 293T Lysate is suitable as a Western Blotting positive control for human reactive Fibrinogen  $\gamma$  antibodies. Recommended use: 10-20  $\mu$ l per lane.

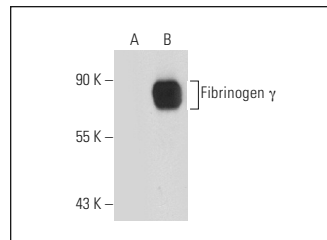
Control 293T Lysate: sc-117752 is available as a Western Blotting negative control lysate derived from non-transfected 293T cells.

Fibrinogen  $\gamma$  (D-6): sc-133226 is recommended as a positive control antibody for Western Blot analysis of enhanced human Fibrinogen  $\gamma$  expression in Fibrinogen  $\gamma$  transfected 293T cells (starting dilution 1:100, dilution range 1:100-1:1,000).

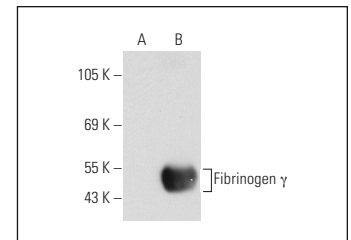
## RECOMMENDED SUPPORT REAGENTS

To ensure optimal results, the following support reagents are recommended: 1) Western Blotting: use m-IgG $\kappa$  BP-HRP: sc-516102 or m-IgG $\kappa$  BP-HRP (Cruz Marker): sc-516102-CM (dilution range: 1:1000-1:10000), Cruz Marker™ Molecular Weight Standards: sc-2035, UltraCruz® Blocking Reagent: sc-516214 and Western Blotting Luminol Reagent: sc-2048.

## DATA



Fibrinogen  $\gamma$  (D-6): sc-133226. Western blot analysis of Fibrinogen  $\gamma$  expression in non-transfected: sc-117752 (A) and human Fibrinogen  $\gamma$  transfected: sc-158507 (B) 293T whole cell lysates.



Fibrinogen  $\gamma$  (G-10): sc-133156. Western blot analysis of Fibrinogen  $\gamma$  expression in non-transfected: sc-117752 (A) and human Fibrinogen  $\gamma$  transfected: sc-158507 (B) 293T whole cell lysates.

## RESEARCH USE

For research use only, not for use in diagnostic procedures.