



SZABO SCANDIC

Part of Europa Biosite

Produktinformation



Forschungsprodukte & Biochemikalien



Zellkultur & Verbrauchsmaterial



Diagnostik & molekulare Diagnostik



Laborgeräte & Service

Weitere Information auf den folgenden Seiten!
See the following pages for more information!



Lieferung & Zahlungsart

siehe unsere [Liefer- und Versandbedingungen](#)

Zuschläge

- Mindermengenzuschlag
- Trockeneiszuschlag
- Gefahrgutzuschlag
- Expressversand

SZABO-SCANDIC HandelsgmbH

Quellenstraße 110, A-1100 Wien

T. +43(0)1 489 3961-0

F. +43(0)1 489 3961-7

mail@szabo-scandic.com

www.szabo-scandic.com

[linkedin.com/company/szaboscandic](https://www.linkedin.com/company/szaboscandic) 

Fyn (h2): 293 Lysate: sc-158527

BACKGROUND

Src is the human homolog of the v-src gene of the Rous sarcoma virus, also called avian sarcoma virus or ASV. Src was the first proto-oncogenic non-receptor tyrosine kinase characterized in human. By virtue of common structural motifs, the Src family is composed of nine members in vertebrates, including Src, Yes, Fgr, Frk, Fyn, Lyn, Hck, Lck and Blk. Src-family kinases transduce signals that are involved in the control of a variety of cellular processes, including proliferation, differentiation, motility and adhesion. Src-family kinases contain an amino-terminal cell membrane anchor followed by an SH3 domain and an SH2 domain involved in modular association and activation, respectively. Src-family kinases are normally maintained in an inactive state and can be activated transiently during cellular events such as mitosis. Different subcellular localizations of Src-family kinases may be important for the regulation of specific cellular processes such as mitogenesis, cytoskeletal organization and membrane trafficking. Fyn and Lck kinases play a key role in T-cell antigen receptor (TCR) signaling. The human Fyn gene maps to chromosome 6q21 and encodes a 537 amino acid protein.

REFERENCES

1. Sakaguchi, A.Y., et al. 1982. Organization of human proto-oncogenes. *Am. J. Hum. Genet.* 34: 175.
2. Hibbs, M.L., et al. 1997. Lyn, a Src-like tyrosine kinase. *Int. J. Biochem. Cell Biol.* 29: 397-400.
3. Williams, J.C., et al. 1998. Insights into Src kinase functions: structural comparisons. *Trends Biochem. Sci.* 23: 179-184.
4. Tatosyan, A.G., et al. 2000. Kinases of the Src family: structure and functions. *Biochemistry* 65: 49-58.
5. Bjorge, J.D., et al. 2000. Selected glimpses into the activation and function of Src kinase. *Oncogene* 19: 5620-5635.
6. Korade-Mirnic, Z., et al. 2000. Src kinase-mediated signaling in leukocytes. *J. Leukoc. Biol.* 68: 603-613.
7. Gilmore, E.S., et al. 2001. SRC family kinases mediate epithelial Na⁺ channel inhibition by endothelin. *J. Biol. Chem.* 276: 42610-42617.

CHROMOSOMAL LOCATION

Genetic locus: FYN (human) mapping to 6q21.

PRODUCT

Fyn (h2): 293 Lysate represents a lysate of human Fyn transfected 293 cells and is provided as 100 µg protein in 200 µl SDS-PAGE buffer.

STORAGE

Store at -20° C. Repeated freezing and thawing should be minimized. Sample vial should be boiled once prior to use. Non-hazardous. No MSDS required.

PROTOCOLS

See our web site at www.scbt.com for detailed protocols and support products.

APPLICATIONS

Fyn (h2): 293 Lysate is suitable as a Western Blotting positive control for human reactive Fyn antibodies. Recommended use: 10-20 µl per lane.

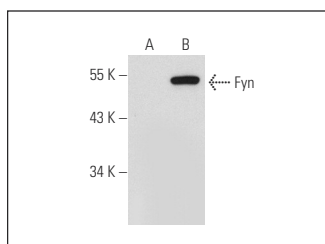
Control 293 Lysate: sc-110760 is available as a Western Blotting negative control lysate derived from non-transfected 293 cells.

Fyn (15): sc-434 is recommended as a positive control antibody for Western Blot analysis of enhanced human Fyn expression in Fyn transfected 293 cells (starting dilution 1:100, dilution range 1:100-1:1,000).

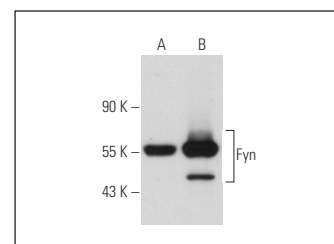
RECOMMENDED SUPPORT REAGENTS

To ensure optimal results, the following support reagents are recommended:
 1) Western Blotting: use m-IgGκ BP-HRP: sc-516102 or m-IgGκ BP-HRP (Cruz Marker): sc-516102-CM (dilution range: 1:1000-1:10000), Cruz Marker™ Molecular Weight Standards: sc-2035, UltraCruz® Blocking Reagent: sc-516214 and Western Blotting Luminol Reagent: sc-2048.

DATA



Fyn (15): sc-434. Western blot analysis of Fyn expression in non-transfected: sc-110760 (A) and human Fyn transfected: sc-158527 (B) 293 whole cell lysates.



Fyn (FYN-01): sc-51598. Western blot analysis of Fyn expression in non-transfected: sc-110760 (A) and human Fyn transfected: sc-158527 (B) 293 whole cell lysates.

RESEARCH USE

For research use only, not for use in diagnostic procedures.