



SZABO SCANDIC

Part of Europa Biosite

Produktinformation



Forschungsprodukte & Biochemikalien



Zellkultur & Verbrauchsmaterial



Diagnostik & molekulare Diagnostik



Laborgeräte & Service

Weitere Information auf den folgenden Seiten!
See the following pages for more information!



Lieferung & Zahlungsart

siehe unsere [Liefer- und Versandbedingungen](#)

Zuschläge

- Mindermengenzuschlag
- Trockeneiszuschlag
- Gefahrgutzuschlag
- Expressversand

SZABO-SCANDIC HandelsgmbH

Quellenstraße 110, A-1100 Wien

T. +43(0)1 489 3961-0

F. +43(0)1 489 3961-7

mail@szabo-scandic.com

www.szabo-scandic.com

[linkedin.com/company/szaboscandic](https://www.linkedin.com/company/szaboscandic) 

PDE6 β (h3): 293 Lysate: sc-158829

BACKGROUND

Cyclic guanosine monophosphate (cGMP)-specific phosphodiesterase (PDE6) plays a crucial role in the phototransduction cascade in the vertebrate retina. The enzyme consists of an α and a β subunit, with catalytic and cGMP binding activity, respectively, as well as two inhibitory γ subunits and a δ subunit. PDE6 reduces intracellular cytoplasmic cGMP levels, specifically in photoreceptor cells. Mutations in the human PDE6A gene, which encodes the α subunit, account for roughly 3-4% of the cases of recessive retinitis pigmentosa (RP) in North America.

REFERENCES

- Mohamed, M.K., Taylor, R.E., Feinstein, D.S., Huang, X. and Pittler, S.J. 1998. Structure and upstream region characterization of the human gene encoding rod photoreceptor cGMP phosphodiesterase α -subunit. *J. Mol. Neurosci.* 10: 235-250.
- Dryja, T.P., Rucinski, D.E., Chen, S.H. and Berson, E.L. 1999. Frequency of mutations in the gene encoding the α subunit of rod cGMP-phosphodiesterase in autosomal recessive retinitis pigmentosa. *Invest. Ophthalmol. Vis. Sci.* 40: 1859-1865.
- Dekomien, G. and Epplen, J.T. 2000. Exclusion of the PDE6A gene for generalised progressive retinal atrophy in 11 breeds of dog. *Anim. Genet.* 31: 135-139.
- Pittler, S.J., Zhang, Y., Chen, S., Mears, A.J., Zack, D.J., Ren, Z., Swain, P.K., Yao, S., Swaroop, A. and White, J.B. 2004. Functional analysis of the rod photoreceptor cGMP phosphodiesterase α -subunit gene promoter: Nr1 and Crx are required for full transcriptional activity. *J. Biol. Chem.* 279: 19800-19807.

CHROMOSOMAL LOCATION

Genetic locus: PDE6B (human) mapping to 4p16.3.

PRODUCT

PDE6 β (h3): 293 Lysate represents a lysate of human PDE6 β transfected 293 cells and is provided as 100 μ g protein in 200 μ l SDS-PAGE buffer.

STORAGE

Store at -20 $^{\circ}$ C. Repeated freezing and thawing should be minimized. Sample vial should be boiled once prior to use. Non-hazardous. No MSDS required.

APPLICATIONS

PDE6 β (h3): 293 Lysate is suitable as a Western Blotting positive control for human reactive PDE6 β antibodies. Recommended use: 10-20 μ l per lane.

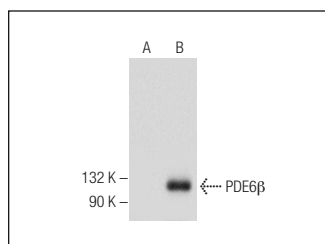
Control 293 Lysate: sc-110760 is available as a Western Blotting negative control lysate derived from non-transfected 293 cells.

PDE6 β (B-8): sc-377486 is recommended as a positive control antibody for Western Blot analysis of enhanced human PDE6 β expression in PDE6 β transfected 293 cells (starting dilution 1:100, dilution range 1:100-1:1,000).

RECOMMENDED SUPPORT REAGENTS

To ensure optimal results, the following support reagents are recommended:
1) Western Blotting: use m-IgG κ BP-HRP: sc-516102 or m-IgG κ BP-HRP (Cruz Marker): sc-516102-CM (dilution range: 1:1000-1:10000), Cruz MarkerTM Molecular Weight Standards: sc-2035, UltraCruz[®] Blocking Reagent: sc-516214 and Western Blotting Luminol Reagent: sc-2048.

DATA



PDE6 β (B-8): sc-377486. Western blot analysis of PDE6 β expression in non-transfected: sc-110760 (A) and human PDE6 β transfected: sc-158829 (B) 293 whole cell lysates.

RESEARCH USE

For research use only, not for use in diagnostic procedures.

PROTOCOLS

See our web site at www.scbt.com for detailed protocols and support products.