



SZABO SCANDIC

Part of Europa Biosite

Produktinformation



Forschungsprodukte & Biochemikalien



Zellkultur & Verbrauchsmaterial



Diagnostik & molekulare Diagnostik



Laborgeräte & Service

Weitere Information auf den folgenden Seiten!
See the following pages for more information!



Lieferung & Zahlungsart

siehe unsere [Liefer- und Versandbedingungen](#)

Zuschläge

- Mindermengenzuschlag
- Trockeneiszuschlag
- Gefahrgutzuschlag
- Expressversand

SZABO-SCANDIC HandelsgmbH

Quellenstraße 110, A-1100 Wien

T. +43(0)1 489 3961-0

F. +43(0)1 489 3961-7

mail@szabo-scandic.com

www.szabo-scandic.com

[linkedin.com/company/szaboscandic](https://www.linkedin.com/company/szaboscandic) 

PI 3-kinase p110 γ (h2): 293 Lysate: sc-158848

BACKGROUND

Phosphatidylinositol 3-kinase (PI 3-kinase) is composed of p85 and p110 subunits. p85 lacks PI 3-kinase activity and acts as an adapter, coupling p110 to activated protein tyrosine kinase. Two forms of p85 have been described (p85 α and p85 β), each possessing one SH3 and two SH2 domains. Various p110 isoforms have been identified. p110 α and p110 β interact with p85 α , and p110 α has also been shown to interact with p85 β *in vitro*. p110 δ expression is restricted to white blood cells. It has been shown to bind p85 α and β , but it apparently does not phosphorylate these subunits. p110 δ seems to have the capacity to autophosphorylate. p110 γ does not interact with the p85 subunits. It has been shown to be activated by α and $\beta\gamma$ heterotrimeric G proteins.

REFERENCES

- Skolnik, E.Y., et al. 1991. Cloning of PI 3 kinase-associated p85 utilizing a novel method for expression/cloning of target proteins for receptor tyrosine kinases. *Cell* 65: 83-90.
- Otsu, M., et al. 1991. Characterization of two 85 kDa proteins that associate with receptor tyrosine kinases, middle-T/pp60-src complexes and PI 3-kinase. *Cell* 65: 91-104.
- Hiles, I.D., et al. 1992. Phosphatidylinositol 3-kinase: structure and expression of the 110 kDa catalytic subunit. *Cell* 70: 419-429.
- Hu, P., et al. 1993. Cloning of a novel, ubiquitously expressed human phosphatidylinositol 3-kinase and identification of its binding site on p85. *Mol. Cell. Biol.* 13: 7677-7688.
- Stoyanov, B., et al. 1995. Cloning and characterization of a G protein-activated human phosphoinositide-3 kinase. *Science* 269: 690-693.
- Vanhaesebroeck, B., et al. 1997. p110 δ , a novel phosphoinositide 3-kinase in leukocytes. *Proc. Natl. Acad. Sci. USA* 94: 4330-4335.

CHROMOSOMAL LOCATION

Genetic locus: PIK3CG (human) mapping to 7q22.3.

PRODUCT

PI 3-kinase p110 γ (h2): 293 Lysate represents a lysate of human PI 3-kinase p110 γ transfected 293 cells and is provided as 100 μ g protein in 200 μ l SDS-PAGE buffer.

APPLICATIONS

PI 3-kinase p110 γ (h2): 293 Lysate is suitable as a Western Blotting positive control for human reactive PI 3-kinase p110 γ antibodies. Recommended use: 10-20 μ l per lane.

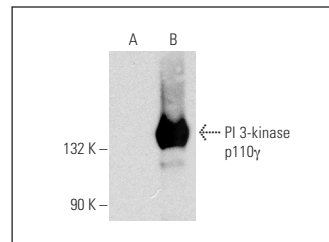
Control 293 Lysate: sc-110760 is available as a Western Blotting negative control lysate derived from non-transfected 293 cells.

PI 3-kinase p110 γ (D-12): sc-166365 is recommended as a positive control antibody for Western Blot analysis of enhanced human PI 3-kinase p110 γ expression in PI 3-kinase p110 γ transfected 293 cells (starting dilution 1:100, dilution range 1:100-1:1,000).

RECOMMENDED SUPPORT REAGENTS

To ensure optimal results, the following support reagents are recommended:
1) Western Blotting: use m-IgG κ BP-HRP: sc-516102 or m-IgG κ BP-HRP (Cruz Marker): sc-516102-CM (dilution range: 1:1000-1:10000), Cruz Marker™ Molecular Weight Standards: sc-2035, UltraCruz® Blocking Reagent: sc-516214 and Western Blotting Luminol Reagent: sc-2048.

DATA



PI 3-kinase p110 γ (D-12): sc-166365. Western blot analysis of PI 3-kinase p110 γ expression in non-transfected: sc-110760 (A) and human PI 3-kinase p110 γ transfected: sc-158848 (B) 293 whole cell lysates.

STORAGE

Store at -20° C. Repeated freezing and thawing should be minimized. Sample vial should be boiled once prior to use. Non-hazardous. No MSDS required.

RESEARCH USE

For research use only, not for use in diagnostic procedures.

PROTOCOLS

See our web site at www.scbt.com for detailed protocols and support products.