



# SZABO SCANDIC

Part of Europa Biosite

## Produktinformation



Forschungsprodukte & Biochemikalien



Zellkultur & Verbrauchsmaterial



Diagnostik & molekulare Diagnostik



Laborgeräte & Service

Weitere Information auf den folgenden Seiten!  
See the following pages for more information!



### Lieferung & Zahlungsart

siehe unsere [Liefer- und Versandbedingungen](#)

### Zuschläge

- Mindermengenzuschlag
- Trockeneiszuschlag
- Gefahrgutzuschlag
- Expressversand

### SZABO-SCANDIC HandelsgmbH

Quellenstraße 110, A-1100 Wien

T. +43(0)1 489 3961-0

F. +43(0)1 489 3961-7

[mail@szabo-scandic.com](mailto:mail@szabo-scandic.com)

[www.szabo-scandic.com](http://www.szabo-scandic.com)

[linkedin.com/company/szaboscandic](https://www.linkedin.com/company/szaboscandic) 

# ROR $\gamma$ (h6): 293T Lysate: sc-158936

## BACKGROUND

The nuclear orphan receptors ROR $\alpha$  and ROR $\gamma$  are members of the nuclear hormone receptor superfamily. This family acts by directly associating with DNA sequences known as hormone response elements (HREs) and typically binds DNA as either homo- or heterodimers. ROR $\alpha$  and ROR $\gamma$  are unique in that they bind DNA as monomers. ROR $\alpha$  has multiple isoforms that share common DNA- and putative ligand-binding domains, but differ in their amino-terminal domains, which are generated by alternative RNA processing. ROR $\gamma$  comprises a 560 amino acid protein that shares 50% amino acid identity with ROR $\alpha$  and is most highly expressed in skeletal muscle. Although these proteins are considered "orphan receptors," due to a lack of defined ligands, experimental evidence has shown that melatonin may be the natural ligand for these nuclear receptors. The gene encoding ROR $\alpha$  maps to chromosome 15q22.2 and the gene encoding ROR $\gamma$  maps to chromosome 1q21.3.

## REFERENCES

- Giguere, V., Tini, M., Flock, G., Ong, E., Evans, R.M. and Otulakowski, G. 1994. Isoform-specific amino-terminal domains dictate DNA-binding properties of ROR $\alpha$ , a novel family of orphan hormone nuclear receptors. *Genes Dev.* 8: 538-543.
- Hirose, T., Smith, R.J. and Jetten, A.M. 1994. ROR $\gamma$ : the third member of ROR/RZR orphan receptor subfamily that is highly expressed in skeletal muscle. *Biochem. Biophys. Res. Commun.* 205: 1976-1983.
- Mangelsdorf, D.J., Thummel, C., Beato, M., Herrlich, P., Schütz, G., Umesono, K., Blumberg, B., Kastner, P., Mark, M., Chambon, P. and Evans, R.M. 1995. The nuclear receptor superfamily: the second decade. *Cell* 83: 835-839.
- Mangelsdorf, D.J. and Evans, R.M. 1995. The RXR heterodimers and orphan receptors. *Cell* 83: 841-850.
- Leblanc, B.P. and Stunnenberg, H.G. 1995. 9-*cis* retinoic acid signaling: changing partners causes some excitement. *Genes Dev.* 9: 1811-1816.
- Carlberg, C. and Wiesenberg, I. 1995. The orphan receptor family RZR/ROR, melatonin and 5-lipoxygenase: an unexpected relationship. *J. Pineal Res.* 18: 171-178.
- Gawlas, K. and Stunnenberg, H.G. 2000. Differential binding and transcriptional behaviour of two highly related orphan receptors, ROR $\alpha_4$  and ROR $\beta_1$ . *Biochim. Biophys. Acta* 1494: 236-241.
- LocusLink Report (LocusID: 6097). <http://www.ncbi.nlm.nih.gov/LocusLink/>

## CHROMOSOMAL LOCATION

Genetic locus: RORC (human) mapping to 1q21.3.

## PRODUCT

ROR $\gamma$  (h6): 293T Lysate represents a lysate of human ROR $\gamma$  transfected 293T cells and is provided as 100  $\mu$ g protein in 200  $\mu$ l SDS-PAGE buffer.

## STORAGE

Store at -20° C. Repeated freezing and thawing should be minimized. Sample vial should be boiled once prior to use. Non-hazardous. No MSDS required.

## APPLICATIONS

ROR $\gamma$  (h6): 293T Lysate is suitable as a Western Blotting positive control for human reactive ROR $\gamma$  antibodies. Recommended use: 10-20  $\mu$ l per lane.

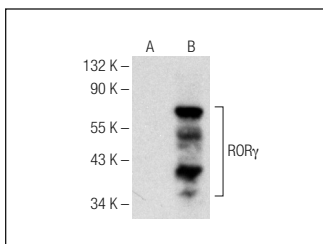
Control 293T Lysate: sc-117752 is available as a Western Blotting negative control lysate derived from non-transfected 293T cells.

ROR $\gamma$  (D-4): sc-365476 is recommended as a positive control antibody for Western Blot analysis of enhanced human ROR $\gamma$  expression in ROR $\gamma$  transfected 293T cells (starting dilution 1:100, dilution range 1:100-1:1,000).

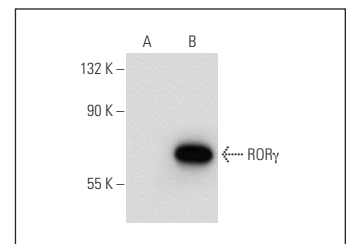
## RECOMMENDED SUPPORT REAGENTS

To ensure optimal results, the following support reagents are recommended:  
 1) Western Blotting: use m-IgG $\kappa$  BP-HRP: sc-516102 or m-IgG $\kappa$  BP-HRP (Cruz Marker): sc-516102-CM (dilution range: 1:1000-1:10000), Cruz Marker™ Molecular Weight Standards: sc-2035, UltraCruz® Blocking Reagent: sc-516214 and Western Blotting Luminol Reagent: sc-2048.

## DATA



ROR $\gamma$  (D-4): sc-365476. Western blot analysis of ROR $\gamma$  expression in non-transfected: sc-117752 (A) and human ROR $\gamma$  transfected: sc-158936 (B) 293T whole cell lysates.



ROR $\gamma$  (162C2a): sc-81371. Western blot analysis of ROR $\gamma$  expression in non-transfected: sc-117752 (A) and human ROR $\gamma$  transfected: sc-158936 (B) 293T whole cell lysates.

## RESEARCH USE

For research use only, not for use in diagnostic procedures.

## PROTOCOLS

See our web site at [www.scbt.com](http://www.scbt.com) for detailed protocols and support products.